



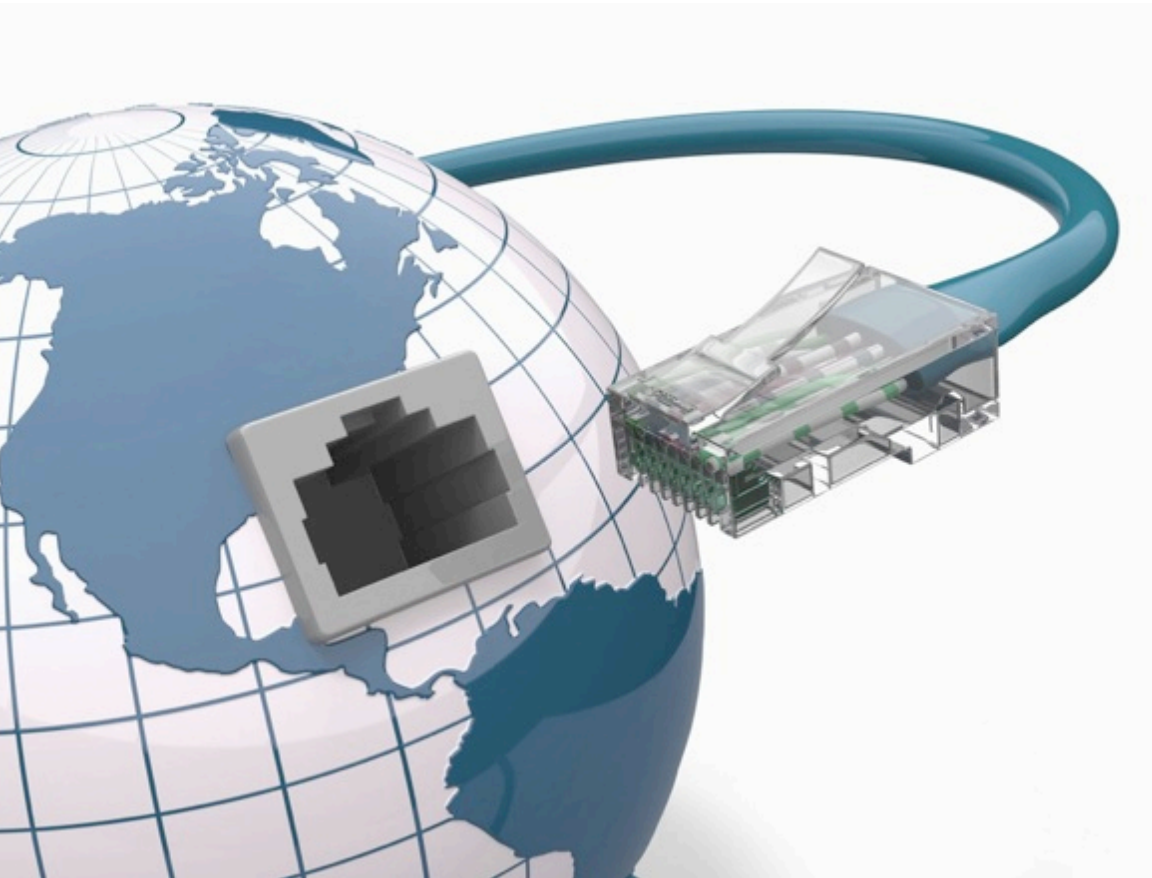
RUGGED. REMOTE.
RELIABLE

Satellite Asset Monitoring Solutions



Features Overview

Since 2008, Faria Beede has been providing a cutting edge telematics solutions to major corporations and governments around the world including;



- British Petroleum
- CAT Marine
- Cummins Marine
- Mercury Marine
- WABTEC Railway Electronics
- US Department of Commerce

Faria Beede developed a powerful software solution enabling customers to

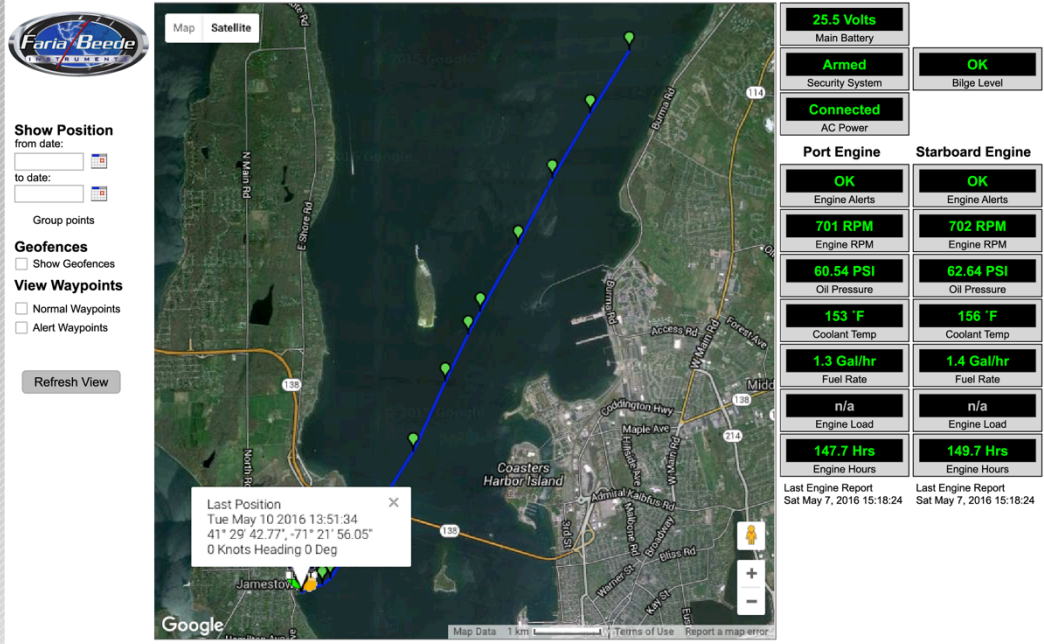
- streamline telemetry application
- reduce operating costs
- increase up-time
- provide data needed to efficiently run vessels and operations

EntelNet Demo View Vessel View

Fleet Page | Information | Monitoring | Switches | Batteries | Tanks | Shore Power | View Logs | Settings

ASSET VIEW Boat "Demo Boat 1" ID: EN00001 Service Yard: Uncasville '2016 Sport Fisher 000101

Tue, 10 May 2016 20:02:05 GMT



Map Satellite

Show Position
from date:
to date:

Group points

Geofences
 Show Geofences

View Waypoints
 Normal Waypoints
 Alert Waypoints

Refresh View

Last Position
Tue May 10 2016 13:51:34
41° 29' 42.77", -71° 21' 56.05"
0 Knots Heading 0 Deg

25.5 Volts
Main Battery

Armed
Security System

Connected
AC Power

OK
Blige Level

Port Engine	Starboard Engine
OK Engine Alerts	OK Engine Alerts
701 RPM Engine RPM	702 RPM Engine RPM
60.54 PSI Oil Pressure	62.64 PSI Oil Pressure
153 °F Coolant Temp	156 °F Coolant Temp
1.3 Gal/hr Fuel Rate	1.4 Gal/hr Fuel Rate
n/a Engine Load	n/a Engine Load
147.7 Hrs Engine Hours	149.7 Hrs Engine Hours

Last Engine Report Sat May 7, 2016 15:18:24

Last Engine Report Sat May 7, 2016 15:18:24

Icon Legend OK Warning Alert AWOL

©2016 EntelNet Demo



GSM services provided by,



IRIDIUM



Iridium Satellite, GPS, GSM Cellular, Wi-Fi, CAN technologies & the Internet are integrated to **provide real-time information** about the status and location of marine vessels, engines & generators.

EntelNet Demo View: Vessel View

Fleet Page Information Monitoring Switches Batteries Tanks Shore Power View Logs Settings

ASSET VIEW Boat "Demo Boat 1" ID: EN00001 Service Yard: Uncasville 2016 Sport Fisher 000101 Tue, 10 May 2016 20:02:05 GMT


25.5 Volts
Main Battery
Armed
Security System
Connected
AC Power

OK
Blige Level

Port Engine	Starboard Engine
OK	OK
Engine Alerts	Engine Alerts
701 RPM	702 RPM
Engine RPM	Engine RPM
60.54 PSI	62.64 PSI
Oil Pressure	Oil Pressure
153 °F	156 °F
Coolant Temp	Coolant Temp
1.3 Gal/hr	1.4 Gal/hr
Fuel Rate	Fuel Rate
	n/a

Icon Legend [OK] [Warning] [Alert] [AWOL]

©2016 EntelNet Demo



750 Dual-Band MTU

(Iridium Satellite and GSM Cellular)

J-1939 Engine Monitoring
on-board

2MB Compact Flash RAM
for Data Logging

4-Analog Inputs/Outputs

- Fuel Level
- Security Systems
- As needed

"Plug & Play"

Weather resistant

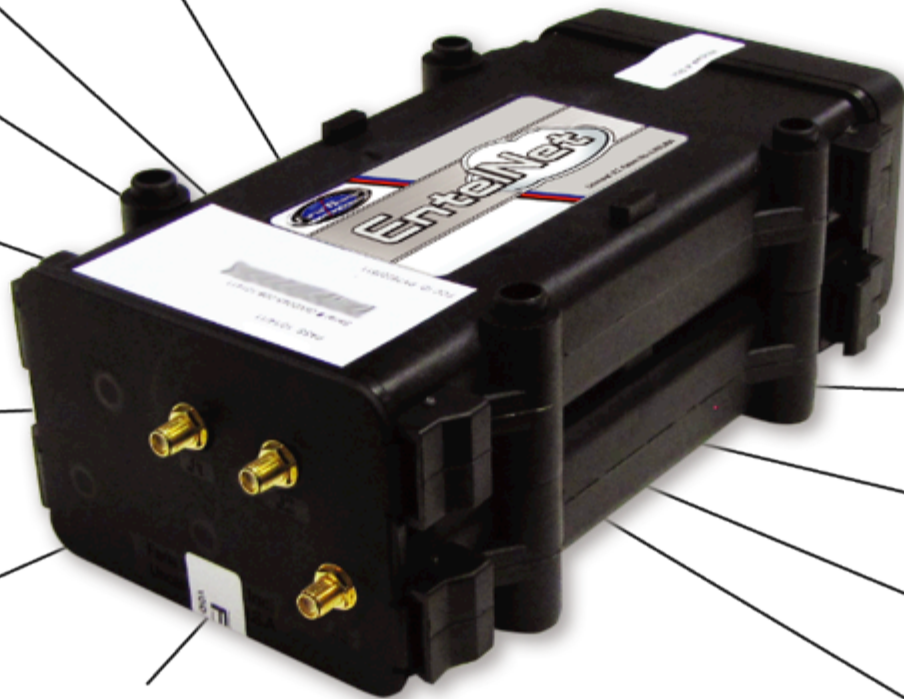
Deutsch Connectors

for Power cables and
VTERM™ connections.

Low Power Draw

- Power Conditioning
- Reverse polarity protection
- Re-settable internal Fuse

On-Board Serial Ports
RS232, RS422, RS485



Fast connections to
the antennas makes
installation a snap.

2" User Interface

- Displays system status, when unit detects a GPS fix and an open communication channel.
- Can send emergency notifications.



Compact, Ruggedized
injected molded case.

IP-66 Rated

Iridium Satellite Modem
powered by **QUAKE GLOBAL**

U-blox 50 Channel GPS
for highly accurate positioning

Seirra Wireless **Quadband**
GSM Module



EntelNet Demo View Vessel View

Fleet Page Information Monitoring Switches Batteries Tanks Shore Power View Logs Settings

ASSET VIEW Boat "Demo Boat 1" ID: EN00001 Service Yard: Uncasville 2016 Sport Fisher 000101 Tue, 10 May 2016 20:02:05 GMT

Map Satellite

Show Position from date: to date:

Group points

Geofences Show Geofences

View Waypoints Normal Waypoints Alert Waypoints

Refresh View

Last Position
Tue May 10 2016 13:51:34
41° 29' 42.77" -71° 21' 56.05"
0 Knots Heading 0 Deg

Icon Legend ■ OK ■ Warning ■ Alert ■ AWOL

25.5 Volts	Main Battery
Armed	Security System
Connected	AC Power
OK	Bilge Level
OK	Engine Alerts
701 RPM	Engine RPM
60.54 PSI	Oil Pressure
153 °F	Coolant Temp
1.3 Gal/hr	Fuel Rate
n/a	Engine Load
147.7 Hrs	Engine Hours
Last Engine Report Sat May 7, 2016 15:18:24	

OK	Engine Alerts
702 RPM	Engine RPM
62.64 PSI	Oil Pressure
156 °F	Coolant Temp
1.4 Gal/hr	Fuel Rate
n/a	Engine Load
149.7 Hrs	Engine Hours
Last Engine Report Sat May 7, 2016 15:18:24	

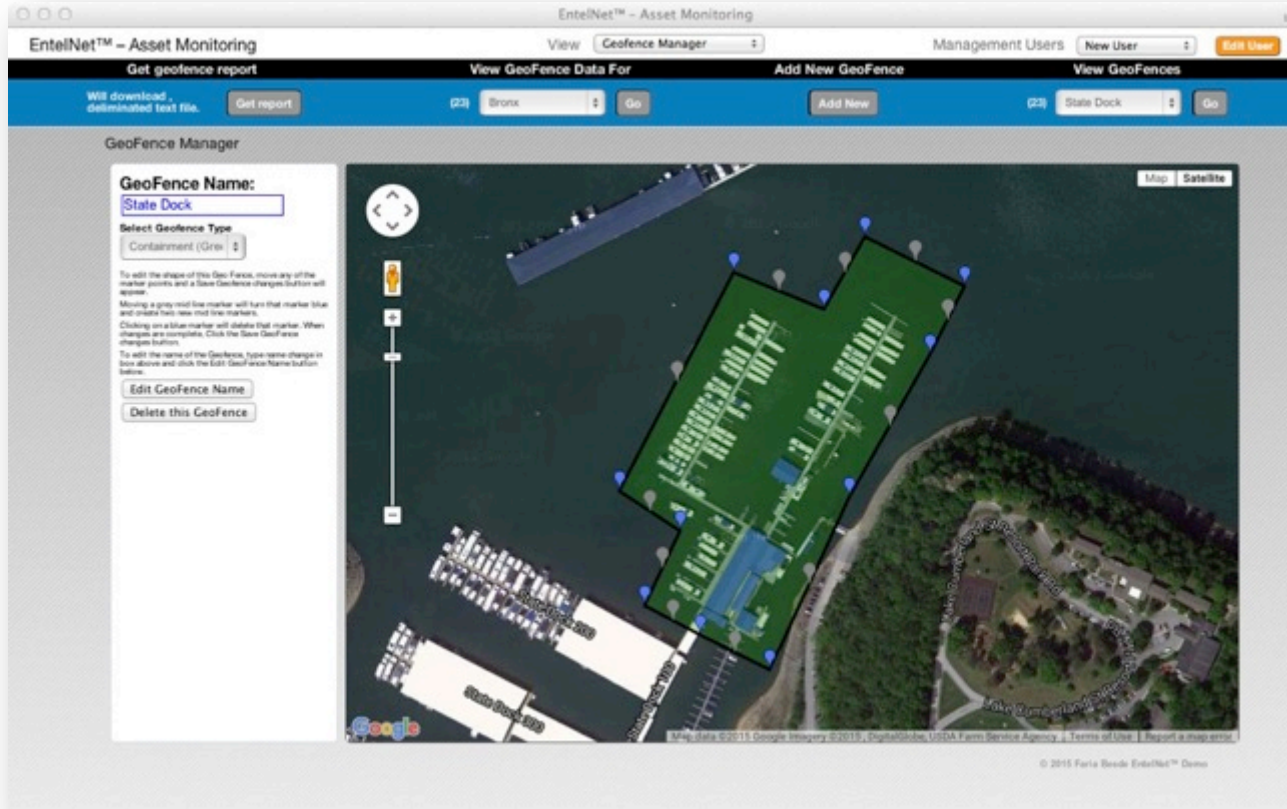
©2016 EntelNet Demo

On-Demand Diagnostics

EntelNet remotely monitors the most critical parameters of your engines, including DM alerts, and select auxiliary systems, like electrical power, alarms and tank levels.

With these remote capabilities, you can monitor your assets from anywhere in the world and technicians can remotely access any fault codes or operating conditions to provide remote support.

With the remote web portal, owners, operator and engineers can track the operating parameters and monitor system performance as well as location in near real-time.



Geo-Fencing

The end user can easily set up geo-fence zones using web tools around docks, worksites, containment areas, etc. and the system notifies real-time if/when a boats move beyond the boundaries.

E-mail and SMS alerts can also be sent automatically to designated recipients when a boat moves.

Increase control and visibility over an entire fleet



The EntelNet Web Portal can provide the location and status of systems on all of your boats. All standard browsers are supported and anywhere there is Internet connectivity you can access the system.

Last Position
Thu Jul 22, 2010 13:39:00
41.072, -71.9381
0 Mph Heading 0.0 Deg

When a DM1 code is detected it is transmitted real-time, displayed on the website and a e-mail and/or sms alert is sent.

25.5 Volts Main Battery	
Monitoring Smoke Alarm	Monitoring High Water
Connected AC Power 1	Connected AC Power 2
Port Engine	Starboard Engine
ON Check Engine	OK Check Engine
552 RPM Engine RPM	549 RPM Engine RPM
26.68 PSI Oil Pressure	26.10 PSI Oil Pressure
149 °F Coolant Temp	153 °F Coolant Temp
1.3 Gal/hr Fuel Rate	1.3 Gal/hr Fuel Rate

Stay Notified

When an alarm condition is indicated, the EntelNet system can notify you, and others you designate, of problems. Alert notifications are sent automatically via SMS or email.

If connected, the EntelNet system can also notify the owner of a security breach or other tripped alerts when you are away.

View Port Engine				View Starboard Engine					
Date/Time Set GMT -5	SPN-FMI	Alert Text	Date/Time Cleared GMT -5	Count	Date/Time Set GMT -5	SPN-FMI	Alert Text	Date/Time Cleared GMT -5	Count
07/13/12 (Fri) 11:37:30	91-08	Throttle Position signal abnormal	07/13/12 (Fri) 11:41:58	2	07/13/12 (Fri) 11:37:29	91-08	Throttle Position signal abnormal	07/13/12 (Fri) 11:41:58	3
07/8/12 (Sun) 14:34:34	110-17	Low Engine Coolant Temperature	07/8/12 (Sun) 14:40:14	2	07/10/12 (Tue) 8:53:09	110-17	Low Engine Coolant Temperature	07/10/12 (Tue) 9:01:29	127
07/8/12 (Sun) 2:38:29	110-17	Low Engine Coolant Temperature	07/8/12 (Sun) 2:44:04	1	07/10/12 (Tue) 7:13:04	110-17	Low Engine Coolant Temperature	07/10/12 (Tue) 7:20:59	127
07/6/12 (Fri) 15:04:49	1382-11	Unexpected Engine Shutdown	07/6/12 (Fri) 15:14:59	36	07/9/12 (Mon) 21:38:24	110-17	Low Engine Coolant Temperature	07/9/12 (Mon) 21:45:30	127

Each occurrence of an alarm or alert is logged in the back office and is available offline for advanced diagnostics.

Geo-fence notification are sent along with GPS location.



Faria Beede servers stores and logs all GPS Position Reports, Engine Data and Diagnostic Messages that can be requested for any date range.

This data can be displayed or .csv file created and downloaded for remote customer analysis.

View Reports from 10/14/2013 to 10/14/2013

Date/Time (GMT -5)	Latitude	Longitude	Type	Speed (Knots)	Heading	Main Battery
10/14/2013 (Mon) 23:49:37	-21.123245	-70.35693	In Motion Report	12.2	19.0	25.5 Volts
10/14/2013 (Mon) 23:34:37	-21.112862	-70.393585	In Motion Report	11.3	106.0	25.5 Volts
10/14/2013 (Mon) 23:21:03 (SAT)	-21.11232	-70.44003	At Rest Report	12.2	75.0	25.5 Volts
10/14/2013 (Mon) 23:05:45 (SAT)	-21.105606	-70.46814	At Rest Report	7.8	322.0	25.5 Volts
10/14/2013 (Mon) 22:51:00 (SAT)	-21.06977	-70.482666	At Rest Report	11.3	154.0	25.5 Volts
10/14/2013 (Mon) 22:34:44 (SAT)	-21.025078	-70.502655	At Rest Report	11.3	157.0	25.5 Volts
10/14/2013 (Mon) 22:20:02 (SAT)	-20.987656	-70.491455	At Rest Report	10.4	234.0	25.5 Volts
10/14/2013 (Mon) 22:04:59 (SAT)	-20.94136	-70.4798	At Rest Report	11.3	190.0	25.5 Volts
10/14/2013 (Mon) 21:49:37	-20.894356	-70.46744	In Motion Report	11.3	192.0	25.5 Volts
10/14/2013 (Mon) 21:35:06 (SAT)	-20.8469	-70.45831	At Rest Report	11.3	188.0	25.5 Volts
10/14/2013 (Mon) 21:22:56 (SAT)	-20.799065	-70.45264	At Rest Report	11.3	182.0	25.5 Volts
10/14/2013 (Mon) 21:04:37	-20.751411	-70.44763	In Motion Report	11.3	186.0	25.5 Volts
10/14/2013 (Mon) 20:50:05 (SAT)	-20.703972	-70.44284	At Rest Report	11.3	187.0	25.5 Volts
10/14/2013 (Mon) 20:34:37	-20.656967	-70.43759	In Motion Report	11.3	185.0	25.5 Volts

GPS position reports

View reports from 07/05/2012 to

Date/Time GMT-3	Speed	Engine RPM	Oil Pressure	Coolant Temp	Fuel Rate	Engine Load	Boost Pressure	Transmission Pressure	Transmission Temperat	Engine Hour
07/5/12 (Thu) 23:57:09	5.2 Knots	1632 RPM	55.68 PSI	183 °F	62.5 Gal/hr	91 %	28.4 PSI	276.2 PSI	159.5 °F	4506.5 Hrs
07/5/12 (Thu) 23:47:04	5.2 Knots	1627 RPM	55.68 PSI	183 °F	62.4 Gal/hr	93 %	28.4 PSI	276.2 PSI	159.5 °F	4506.5 Hrs
07/5/12 (Thu) 23:37:04	4.3 Knots	1632 RPM	55.68 PSI	183 °F	60.9 Gal/hr	90 %	27.6 PSI	273.8 PSI	157.7 °F	4506.0 Hrs
07/5/12 (Thu) 23:27:04	4.3 Knots	1625 RPM	55.68 PSI	183 °F	62.4 Gal/hr	92 %	27.8 PSI	276.2 PSI	157.7 °F	4506.1 Hrs
07/5/12 (Thu) 23:17:04	4.3 Knots	1624 RPM	55.68 PSI	183 °F	62.5 Gal/hr	92 %	27.8 PSI	276.2 PSI	157.7 °F	4506.0 Hrs
07/5/12 (Thu) 23:06:59	5.2 Knots	1629 RPM	55.68 PSI	183 °F	62.0 Gal/hr	91 %	27.6 PSI	276.2 PSI	157.7 °F	4507.8 Hrs
07/5/12 (Thu) 22:56:59	5.2 Knots	1632 RPM	55.68 PSI	181 °F	60.9 Gal/hr	90 %	27.8 PSI	276.2 PSI	157.7 °F	4507.6 Hrs
07/5/12 (Thu) 22:46:59	6.1 Knots	1634 RPM	55.68 PSI	181 °F	61.3 Gal/hr	90 %	25.5 PSI	278.5 PSI	157.7 °F	4507.5 Hrs
07/5/12 (Thu) 22:36:59	6.1 Knots	1627 RPM	55.68 PSI	181 °F	62.5 Gal/hr	91 %	26.7 PSI	276.2 PSI	157.7 °F	4507.3 Hrs
07/5/12 (Thu) 22:26:59	5.2 Knots	1625 RPM	55.10 PSI	180 °F	63.0 Gal/hr	93 %	29.3 PSI	276.2 PSI	157.7 °F	4507.1 Hrs
07/5/12 (Thu) 22:16:54	5.2 Knots	1625 RPM	55.68 PSI	183 °F	62.7 Gal/hr	91 %	28.1 PSI	273.8 PSI	157.7 °F	4507.0 Hrs
07/5/12 (Thu) 22:06:54	4.3 Knots	1624 RPM	55.68 PSI	183 °F	62.9 Gal/hr	92 %	28.4 PSI	273.8 PSI	157.7 °F	4506.8 Hrs
07/5/12 (Thu) 21:56:54	4.3 Knots	1623 RPM	55.10 PSI	181 °F	63.5 Gal/hr	94 %	27.8 PSI	276.2 PSI	157.7 °F	4506.6 Hrs
07/5/12 (Thu) 21:46:54	4.3 Knots	1622 RPM	55.68 PSI	183 °F	62.7 Gal/hr	95 %	27.8 PSI	278.5 PSI	159.5 °F	4506.5 Hrs
07/5/12 (Thu) 21:36:54	6.1 Knots	1628 RPM	55.68 PSI	181 °F	62.4 Gal/hr	92 %	28.1 PSI	276.2 PSI	154.1 °F	4506.3 Hrs
07/5/12 (Thu) 21:26:49	6.1 Knots	1622 RPM	56.26 PSI	181 °F	64.0 Gal/hr	92 %	27.6 PSI	273.8 PSI	146.9 °F	4506.1 Hrs
07/5/12 (Thu) 21:16:49	1.7 Knots	838 RPM	51.04 PSI	176 °F	10.4 Gal/hr	21 %	1.2 PSI	262.2 PSI	143.3 °F	4506.0 Hrs
07/5/12 (Thu) 21:06:49	4.3 Knots	1199 RPM	54.52 PSI	180 °F	25.6 Gal/hr	39 %	5.2 PSI	271.5 PSI	162.3 °F	4505.8 Hrs
07/5/12 (Thu) 21:06:49	4.3 Knots	1199 RPM	54.52 PSI	180 °F	25.6 Gal/hr	39 %	5.2 PSI	271.5 PSI	162.3 °F	4505.8 Hrs
07/5/12 (Thu) 21:06:49	4.3 Knots	1199 RPM	54.52 PSI	180 °F	25.6 Gal/hr	39 %	5.2 PSI	271.5 PSI	162.3 °F	4505.8 Hrs
07/5/12 (Thu) 21:06:49	4.3 Knots	1199 RPM	54.52 PSI	180 °F	25.6 Gal/hr	39 %	5.2 PSI	271.5 PSI	162.3 °F	4505.8 Hrs
07/5/12 (Thu) 20:56:49	5.2 Knots	1627 RPM	55.68 PSI	181 °F	61.6 Gal/hr	92 %	27.0 PSI	278.5 PSI	157.7 °F	4505.6 Hrs
07/5/12 (Thu) 20:56:49	5.2 Knots	1627 RPM	55.68 PSI	181 °F	61.6 Gal/hr	92 %	27.0 PSI	278.5 PSI	157.7 °F	4505.6 Hrs
07/5/12 (Thu) 20:46:49	5.2 Knots	1627 RPM	55.68 PSI	183 °F	61.6 Gal/hr	92 %	27.3 PSI	276.2 PSI	159.5 °F	4505.5 Hrs
07/5/12 (Thu) 20:36:44	4.3 Knots	1629 RPM	55.68 PSI	183 °F	61.6 Gal/hr	91 %	27.3 PSI	278.5 PSI	159.5 °F	4505.3 Hrs
07/5/12 (Thu) 20:26:44	4.3 Knots	1625 RPM	55.68 PSI	183 °F	62.4 Gal/hr	91 %	27.3 PSI	276.2 PSI	159.5 °F	4505.1 Hrs
07/5/12 (Thu) 20:26:44	4.3 Knots	1625 RPM	55.68 PSI	183 °F	62.4 Gal/hr	91 %	27.3 PSI	276.2 PSI	159.5 °F	4505.1 Hrs
07/5/12 (Thu) 20:16:44	6.1 Knots	1625 RPM	55.10 PSI	183 °F	62.6 Gal/hr	93 %	28.4 PSI	278.5 PSI	159.5 °F	4505.0 Hrs
07/5/12 (Thu) 20:06:44	6.1 Knots	1620 RPM	55.68 PSI	183 °F	62.9 Gal/hr	95 %	28.4 PSI	276.2 PSI	159.5 °F	4504.8 Hrs
07/5/12 (Thu) 19:56:39	5.2 Knots	1625 RPM	55.68 PSI	181 °F	63.4 Gal/hr	93 %	27.6 PSI	276.2 PSI	159.5 °F	4504.6 Hrs
07/5/12 (Thu) 19:46:39	5.2 Knots	1630 RPM	55.68 PSI	183 °F	60.0 Gal/hr	89 %	27.6 PSI	280.8 PSI	157.7 °F	4504.5 Hrs
07/5/12 (Thu) 19:36:39	5.2 Knots	1625 RPM	55.68 PSI	181 °F	62.6 Gal/hr	93 %	28.1 PSI	276.2 PSI	159.5 °F	4504.3 Hrs
07/5/12 (Thu) 19:26:39	5.2 Knots	1623 RPM	55.10 PSI	181 °F	63.8 Gal/hr	94 %	27.6 PSI	276.2 PSI	159.5 °F	4504.1 Hrs
07/5/12 (Thu) 19:16:39	5.2 Knots	1627 RPM	55.68 PSI	183 °F	62.5 Gal/hr	92 %	26.7 PSI	276.2 PSI	159.5 °F	4504.0 Hrs

DM1 reports

View reports from 10/15/2013 to

Port Engine				Starboard Engine					
Date/Time Set GMT -4	SPN-FMI	Alert	Date/Time Cleared GMT -4	Count	Date/Time Set GMT -4	SPN-FMI	Alert	Date/Time Cleared GMT -4	Count
08/28/2013 (Mon) 10:18:33	91-08	Accelerator Pedal Position 1 Abnormal Frequency, Pulse Width, or Period	08/26/2013 (Mon) 10:23:38	1	07/18/2013 (Thu) 0:20:53	91-08	Throttle Position signal abnormal	07/18/2013 (Thu) 0:25:16	1
07/18/2013 (Thu) 8:12:41	94-17	Low Fuel Pressure Warning	07/18/2013 (Thu) 11:29:00	1	07/17/2013 (Wed) 23:33:45	94-17	Low Fuel Pressure Warning	07/17/2013 (Wed) 23:37:44	1
07/18/2013 (Thu) 0:19:45	91-08	Throttle Position signal abnormal	07/18/2013 (Thu) 0:25:06	1	03/10/2013 (Sun) 12:54:22	94-17	Low Fuel Pressure Warning	03/10/2013 (Sun) 12:58:07	14
03/09/2013 (Sat) 14:45:32	91-08	Throttle Position signal abnormal	03/09/2013 (Sat) 14:52:02	1	03/10/2013 (Sun) 12:54:22	94-17	Low Fuel Pressure Warning	03/10/2013 (Sun) 12:58:07	14
03/05/2013 (Tue) 16:21:24	94-17	Low Fuel Pressure Warning	03/05/2013 (Tue) 18:11:57	1	03/10/2013 (Sun) 12:54:22	94-17	Low Fuel Pressure Warning	03/10/2013 (Sun) 12:58:07	13
06/22/2012 (Fri) 8:33:10	17	Aftercooler Coolant Level Low Warning	06/22/2012 (Fri) 13:38:35	2	03/05/2013 (Tue) 18:14:17	94-17	Low Fuel Pressure Warning	03/05/2013 (Tue) 18:32:57	12
06/21/2012 (Thu) 14:17:03	17	Aftercooler Coolant Level Low Warning	06/21/2012 (Thu) 14:18:59	1	03/05/2013 (Tue) 18:14:17	94-17	Low Fuel Pressure Warning	03/05/2013 (Tue) 18:12:17	11
05/04/2012 (Fri) 17:00:39	91-08	Throttle Position signal abnormal	05/04/2012 (Fri) 17:06:09	1	03/05/2013 (Tue) 15:28:11	94-17	Low Fuel Pressure Warning	03/05/2013 (Tue) 15:30:27	10
01/04/2012 (Wed) 11:57:49	91-08	Throttle Position signal abnormal	01/04/2012 (Wed) 12:03:09	1	03/05/2013 (Tue) 15:28:11	94-17	Low Fuel Pressure Warning	03/05/2013 (Tue) 15:30:27	9



Start Date Fuel reports
Empty = Yesterday
10/01/2013

Select Boat
FWI Test Boat

Select Report Period
Day
Week
Month

Shift Reports
Shift start -Select-
Shift end -Select-
Shift Report

FUEL USAGE REPORT

REPORT PERIOD: Day Tue Oct 1 2013 (12:00:01 am) to Tue Oct 1 2013 (11:59:59 pm)

Engine Information

Boat Name:	FWI Test Boat	FWIlink Serial #	FWI90137
(Port) Engine Start Hours:	6064.5 Hrs	(Port) Engine Ending Hours:	6074.7 Hrs
(Port) Total Hours:	10.2 Hrs		
(STBD) Engine Start Hours:	6057.8 Hrs	(STBD) Engine Ending Hours:	6068.0 Hrs
(STBD) Total Hours:	10.2 Hrs		
(Port) Engine Start Fuel:	81483.2 Gal	(Port) Engine Ending Fuel:	81690.4 Gal
(Port) Total Fuel:	207.2 Gal		
(STBD) Engine Start Fuel:	71103.9 Gal	(STBD) Engine Ending Fuel:	71293.2 Gal
(STBD) Total Fuel:	189.3 Gal		

Summaries

(Port) Average Fuel Rate:	20.31 Gal/Hr	(STBD) Average Fuel Rate:	18.56 Gal/Hr	Boat Total Fuel:	396.5 Gal
Trips:	54	Miles:	108.77	Miles/Trip:	2
		Gal/Mile:	3.6	Gal/Trip:	7.3

Alert History

Date Set	Alert	Date Cleared	In Alert State
10/01/13 18:57:00	Excess RPM in Hoboken/NJ Transit Terminal	10/01/13	
10/01/13 18:48:46	Excess RPM in World Financial Center	10/01/13	
10/01/13 18:37:14	Excess RPM in Hoboken/NJ Transit Terminal	10/01/13	
10/01/13 18:28:40	Excess RPM in World Financial Center	10/01/13	
10/01/13 18:17:05	Excess RPM in Hoboken/NJ Transit Terminal	10/01/13	
10/01/13 18:07:49	Excess RPM in World Financial Center	10/01/13	

Custom Reporting

Many Commercial Marine customers use this system to monitor and reduce fuel consumption.

Faria Beede developed a custom fuel reports that measure total fuel consumed per shift, day, week, month, etc.

Additionally we have rules based alerting to report excessive idling, RPMs and speed thresholds, created by the customer, to modify driver behavior to reduce excessive fuel consumption.



The EntelNet™ Back Office is an **easy-to-use, secure (https), web-based application** that requires no software to install or manage.

- Supports **all standard browsers**
 - (Internet Explorer, Firefox, Safari, Google, etc.)
- **Secured log-in** with different user access/levels.
- Email and SMS notifications.
- A graphical view of data and Assets on Google® maps.
- Download tabular data in standard formats (such as .xls or .csv files).
- An interface to the telemetry hardware on the asset to create a relationship between the EntelNet™ Serial Number and vehicle or boat number/or ID number.
- Web 2.0 technologies.
- AWSDL/SOAP and/or a JSON TCP interface so you can use the data in your own applications

Thank You!



Proudly Designed and Manufactured
in the USA for more than 100 years.

Manufactured by the Faria Beede Instruments, Inc. , Uncasville CT, USA • Copyright and all other rights reserved.
Our products are continually being improved. Specifications may change without notice.

www.FariaBeede.com
or call 860-848-9271