



# EntelNet

## Wireless Telematics System



# Get Connected

## You Need To Hear What Your Engine Has To Say!

# EntelNet

## Wi-Fi Remote Engine Monitoring

### Engine Monitoring and Alert Communications System.

The EntelNet™ service is a multi part system which combines the information received from the engine ECU (via CAN Bus), Analog (resistance, voltage, etc.) or Serial data (RS-232 for NMEA 0183, typical for GPS) and an over the air communications system, like Wi-Fi, to provide remote control and monitoring of on-board systems.

When an engine is malfunctioning the ECU transmits the area of the malfunction as a fault code.

The fault code is often used to turn on a lamp or an alert indicator. The EntelNet™ system records these fault codes and can send the data, using your e-mail application to the technician giving them a heads up of possible problems or a means to diagnose the engine's health remotely.

#### Wi-Fi Telematics module (WD100)

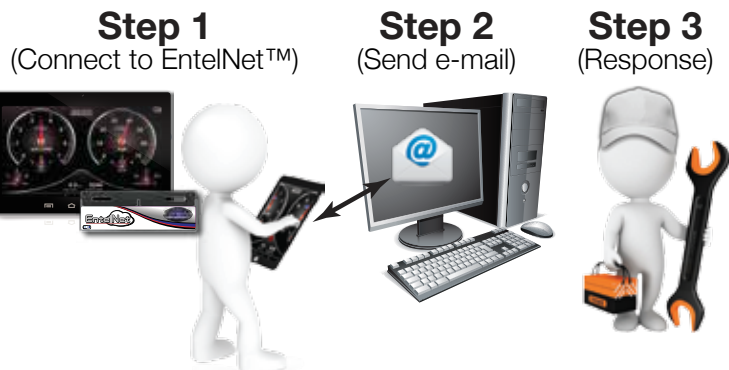


**SAE J1939**



The data (GPS speed, Map position, Instrument data and CAN error codes) is displayed in an easy to read website and can be viewed by an internet capable device.

The engine information can then be sent to a repair facility, via e-mail, giving your repair technician a heads up that you're having problems.



Connected directly to the CAN Bus, Real-Time data is sent by the EntelNet™ wireless module (Wi-Fi™) to your internet capable device. .

#### Get the technicians involved.

- No additional costs
- Send the engine and other critical data anywhere in the world to be diagnosed\*\*
- Helps reduce warranty costs and can help lessen repair time

\* Built for an NMEA2000 AND J1939 engines

\*\* Requires an Android® device connected to the internet.



Use the EntelNet™ and your internet capable device to monitor CAN data being sent by the engine ECU and other critical vessel information right from the palm of your hand.

## Remote Engine Monitoring Application

Built for Android® and connected directly to the NMEA2000\* and J-1939 CAN Bus, Real-Time data is sent by the EntelNet™ wireless module (Wi-Fi™).

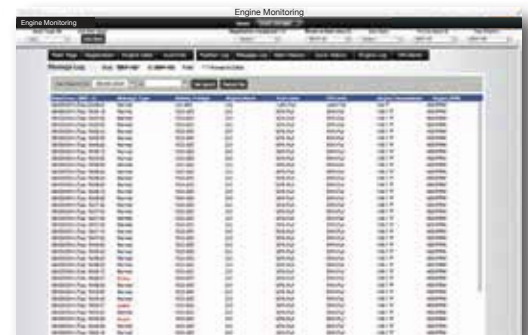
The data (GPS speed, Map position, Instrument data and CAN error codes) is displayed in an easy to read Android® App and can be viewed by any Android® - Smart Phone or Tablet (iOS version coming soon.).



## Send your engine data to the cloud.

When in range of a registered Wi-Fi hotspot, the EntelNet™ can automatically send the engine and environmental data directly to a 24 hour, 7 day a week monitoring server.

Technicians are notified of any faults logged by the EntelNet™. The server aids the technician with logged history of the vessel, providing a clearer picture of the conditions which may contribute to the fault and help provide a faster response.



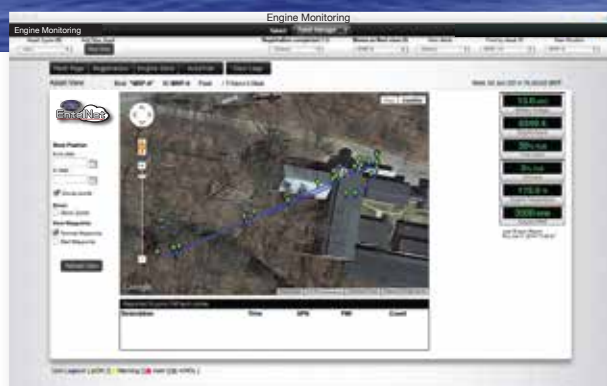
**Data can be viewed on a secure website for remote systems monitoring and diagnostics.**



# You Need To Hear What Your Engine Has To Say



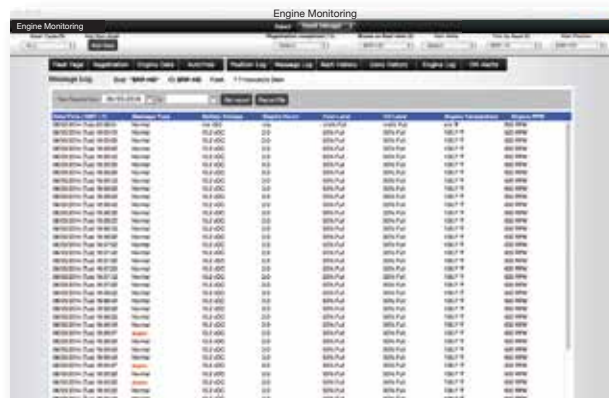
*A complete solution  
for remote instrument  
monitoring!*



*User Definable - 24 Hour,  
7 Days a Week Alert  
Notifications*



*Continuous Data Reports,  
Provides data history*



 Made in the USA

Faria Beede Instruments, Inc.  
P. O. Box 983  
Uncasville, CT 06382  
860.848.9271  
Fax: 860.848.2704

fm-002-0030 D 07/2016