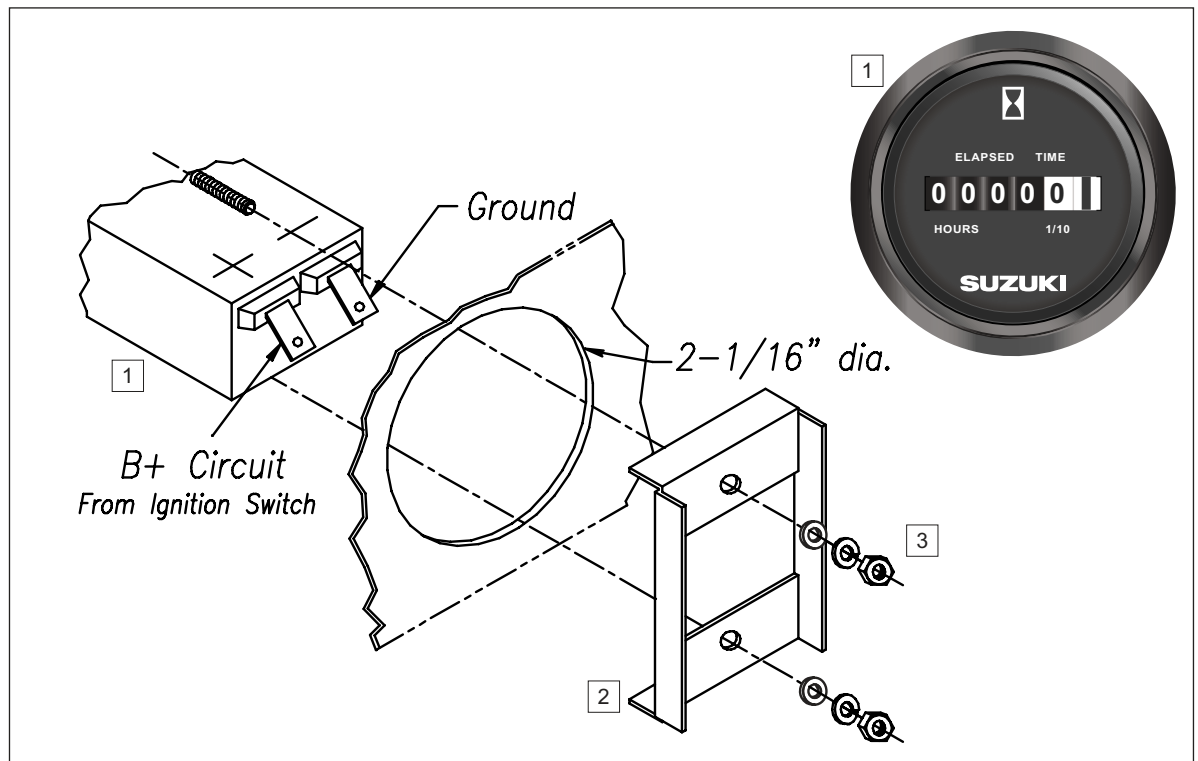


# INSTALLATION INSTRUCTIONS

Description:	<b>Hourmeter</b>	Part Number:	<b>99105-80007/80107</b>
Applications:	<b>Suzuki Marine Boats</b>	Installation Time:	<b>1 HRS</b>
NOTE:	<b>Mounts in standard 2 1/16" hole.</b>	Weight:	<b>1 lbs</b>

## Contents

Ref.	Part Number	Description	QTY
1.	99105-80007/80107	Hourmeter	1
2.	BC0104	Mounting Bracket	1
3.	Mounting Hardware		1



## Tools Required

Ref.	Tools Description
1.	5/16" Nut Driver
2.	Suzuki Terminal Kit 09900-28701



## Important

- ⚠ WARNING**
- ⚠ CAUTION**
- NOTE**

Please read this manual and follow its instructions carefully. To emphasize special information, the symbol **⚠** and the words **WARNING, CAUTION** and **NOTE** have special meanings. Pay special attention to the messages highlighted by these signal words:

**NOTE:** Indicates special information to make maintenance easier or instructions clear.

### ⚠ WARNING

Indicates potential hazard that could result in death or injury.

### ⚠ CAUTION

Indicates potential hazard that could result in vehicle damage.

## ! CAUTION

- Disconnect battery during installation.
- Tighten nuts on backclamp only slightly more than you can tighten with your fingers. Six inch-pounds of torque is sufficient. Over tightening may result in damage to the instrument and may void your warranty.
- Gasket cement or other adhesive is not required to secure tubing to fittings.

## Installation

**1.** It is recommended that you use the included color coded wire extension leads.

**2.** Cut a 2-1/16" dia hole in the dash and mount the gauge with the backclamp supplied.

**3.** Connect the gray extension lead blade terminal to the positive (+) blade terminal of the hourmeter and plug the bullet end into the gray wire of the main engine harness.

**4.** Connect the black extension lead blade terminal to the negative (-) blade terminal of the hourmeter and plug the bullet end into the black wire of the main engine harness.

**5.** Reconnect the battery.

**NOTE:** The hourmeter will run as long as the ignition switch remains in the "on" position. The hourmeter draws very little current and will operate from 8 - 32 VDC.

### Mounting Hardware Kit




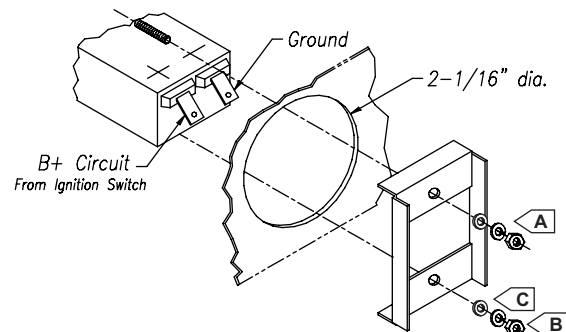
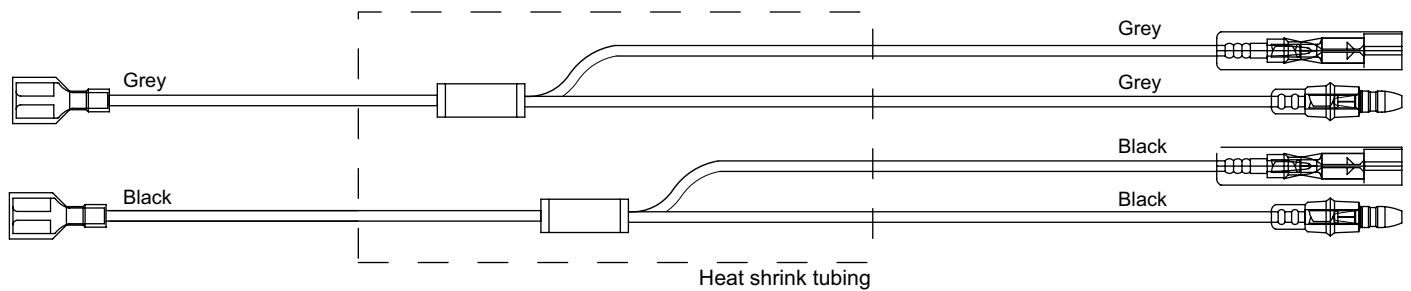
<b>A</b>		<b>x 2</b>
<b>B</b>		<b>x 2</b>
<b>C</b>		<b>x 2</b>

Figure 1



# Harness Diagram

HN0410 rev A ecr 5609 8/05



## Trouble Shooting

Trouble	Inspection	Diagnosis	Action
Gauge Sticks	A. Backclamp may be too tight.	1. Slightly loosen nuts holding backclamp. Check operation.	<ol style="list-style-type: none"> <li>1. If gauge works and is not loose in panel continue using gauge.</li> <li>2. If gauge continues to stick, replace gauge.</li> </ol>
Gauge Inoperative	A. Connections on back of hourmeter may be loose.	1. Check to see that all connections are tight and contain no corrosion.	<ol style="list-style-type: none"> <li>1. If connections are tight and contain no corrosion, and there is power to the key and the key is on, replace hourmeter.</li> <li>2. If connections are loose or corroded, clean and reconnect to hourmeter.</li> </ol>

