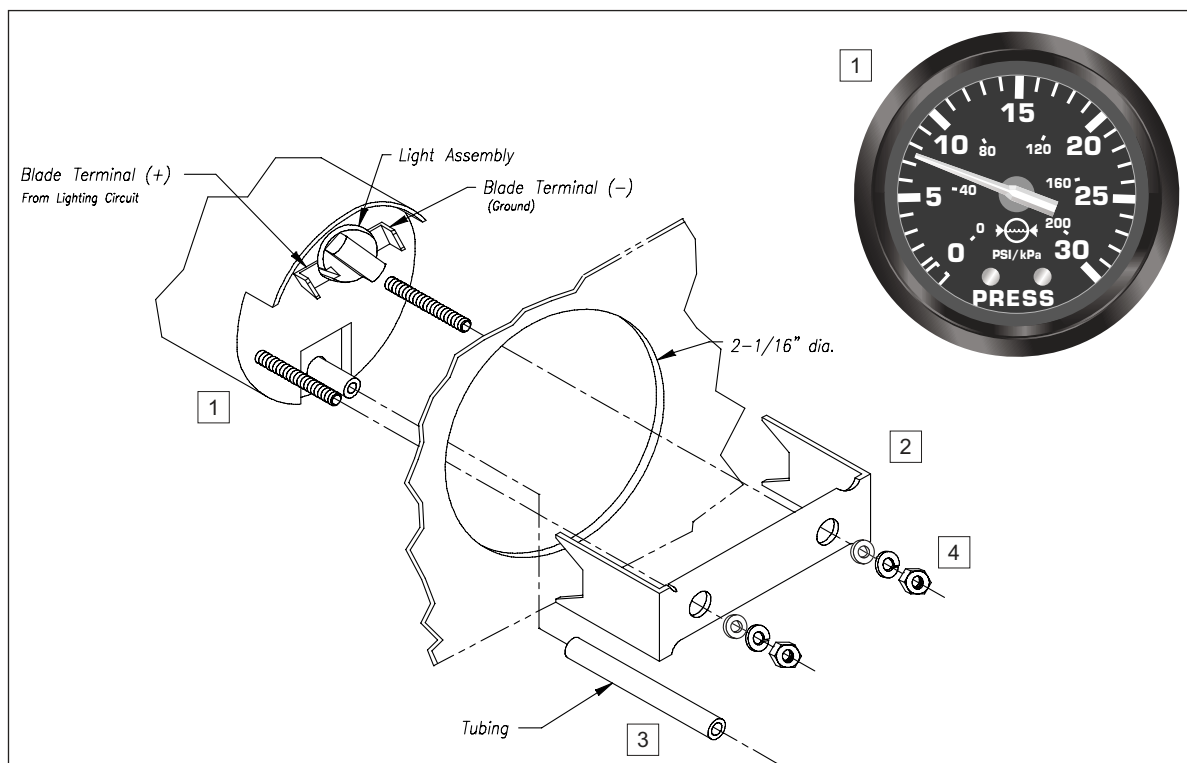


INSTALLATION INSTRUCTIONS

Description:	Water Pressure Gauge	Part Number:	99105-80004/80104
Applications:	Suzuki Marine Boats	Installation Time:	1 HRS
NOTE:	Mounts in standard 2 1/16" hole.	Weight:	1 lbs

Contents

Ref.	Part Number	Description	QTY
1.	99105-80004/80104	Water Pressure Gauge	1
2.	BC1030	Mounting Bracket	1
3.	99105-80009	Pitot Tubing, 15'	1
4.	Mounting Hardware		1



Tools Required

Ref.	Tools Description
1.	3/8" Nut Driver
2.	Suzuki Terminal Kit 09900-28701



Important

- ⚠ WARNING**
- ⚠ CAUTION**
- NOTE**

Please read this manual and follow its instructions carefully. To emphasize special information, the symbol **⚠** and the words **WARNING**, **CAUTION** and **NOTE** have special meanings. Pay special attention to the messages highlighted by these signal words:

NOTE: Indicates special information to make maintenance easier or instructions clear.

⚠ WARNING

Indicates potential hazard that could result in death or injury.

⚠ CAUTION

Indicates potential hazard that could result in vehicle damage.

⚠ CAUTION

- Disconnect battery during installation.
- Tighten nuts on backclamp only slightly more than you can tighten with your fingers. Six inch-pounds of torque is sufficient. Over tightening may result in damage to the instrument and may void your warranty.
- Gasket cement or other adhesive is not required to secure tubing to fittings.

Preparation Prior to Installation

1. Be certain to use stranded, insulated wire not lighter than 18 AWG that is approved for marine use. It is recommended that you use the included color coded wire extension leads.

2. When using water pressure gauge on a Suzuki 4-Stroke please see the Suzuki Accessory catalog or parts micro-fiche for water pressure gauge installation kit.

Installation

3. Please refer to the instructions provided with the appropriate fitting installation kit available from Suzuki.

4. Run tubing along the inside of the boat's gunwale avoiding sharp turns, crimping, kinking, or other forces that may reduce the inside diameter of the tubing. Do not coil any excess as the tubing should be cut to length.

5. Cut a 2-1/16" dia hole in the dash and mount the gauge with backclamp supplied.

6. After installing the gauge in the dash, cut tubing leaving a small amount of slack and press fully onto the male fitting on the back of the gauge.

7. Connect the GREEN/ORANGE extension lead to the blade terminal adjacent to the twist-out light assembly to the positive "+" side of the instrument lighting circuit and the bullet end to the boat lighting circuit. Connect the BLACK extension lead to the negative (-) side of the instrument lighting circuit and the bullet end to the boats electrical ground (-). Reconnect the battery.

NOTE: To change the light bulb, twist out black socket assembly one-eighth turn counterclockwise until it pops out. Bulb pulls straight out of assembly. It is a GE No. 161 instrument lamp.

Mounting Hardware Kit




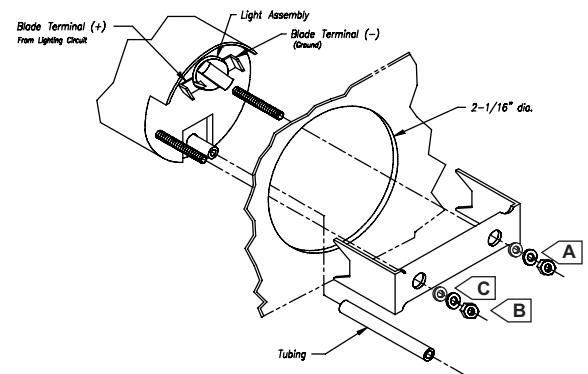
A		x 2
B		x 2
C		x 2

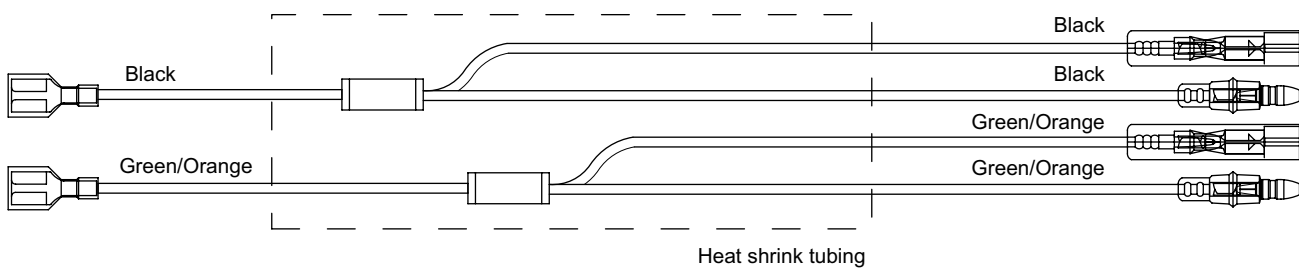
Figure 1





Harness Diagram

HN0415 rev A ecr 5609 8/05



Trouble Shooting

Trouble	Inspection	Diagnosis	Action
Gauge Sticks	A. Backclamp may be too tight.	1. Slightly loosen nuts holding backclamp. Check operation.	1. If gauge works and is not loose in panel, continue using gauge. 2. If gauge continues to stick, replace gauge.
Gauge Inoperative	A. Test for voltage to the gauge. Use voltmeter or test light.	1. Turn power on. Connect one lead to ignition terminal, the other to ground terminal.	1. If 12 volts present connections are good. 2. If 12 volts are not present, at terminals, check for power at key switch or fuse block. If power available, replace leads to terminal.
	B. Check tubing for leaks or kinks.	1. Be sure air can flow freely in tube.	1. Repair leaks or kinks. If gauge works, continue using gauge. 2. If gauge continues to be inoperative, replace gauge.

Maintenance /Care

1. The pitot tube should be flushed with fresh water before storing the boat for prolonged periods. Any remaining water in the rubber hose should also be removed before storing the boat for prolonged periods.
2. Clean the rubber hose with a stiff wire or blow air through it.
3. Flush and clean the pitot tube with fresh water. If necessary, clean the pitot tube opening with a stiff brush.
4. Reconnect the rubber hose to the gauge and secure with a new cable tie.
5. Reconnect the rubber hose to the pitot tube nipple end and secure with a new cable tie.

