

Bridge Card for TS3000 tachometer

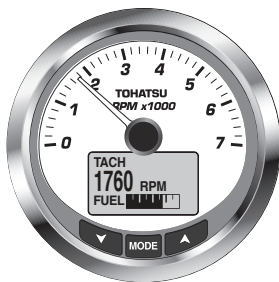
< Applicable models >

Applicable models

MFS25/30, MFS40/50, BFT models, TLDI models

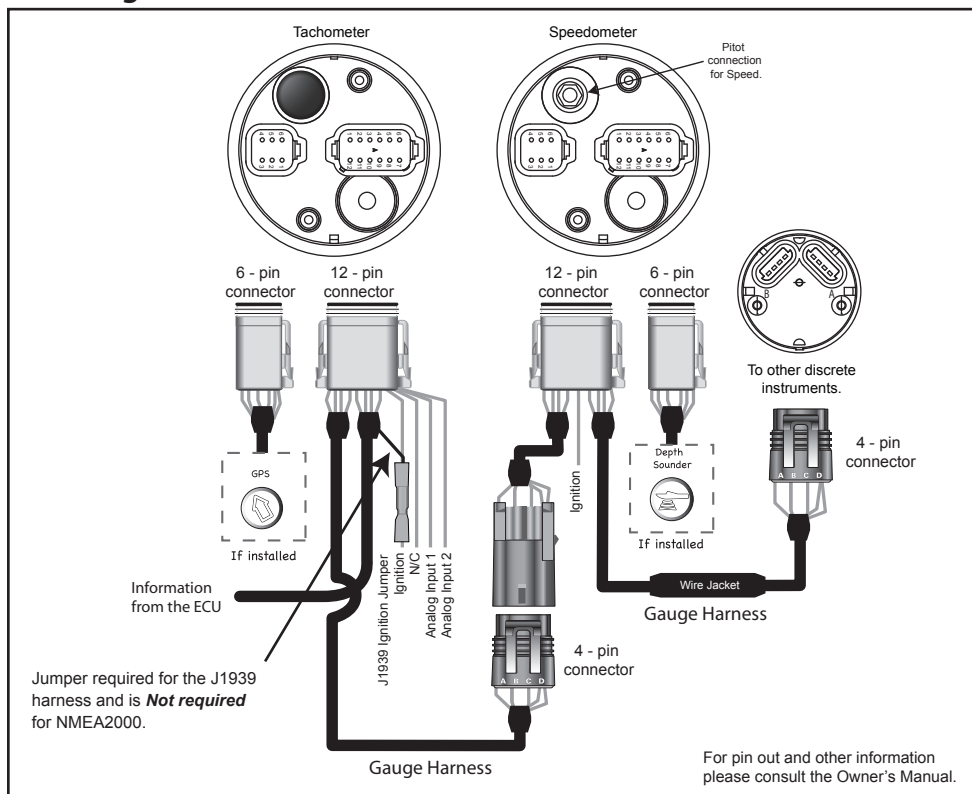
Your TS3000 Instrument Package comes equipped with factory recommended settings and displays. Basic Initialization is necessary for the system to perform properly, please reference the Owner's Manual for additional information.

*Please access to " <http://www.tohatsu.co.jp/en/boat/download/> " to download the Owner's Manual



(P/N: 3KY-72638-*)

< Wiring >



< Silence Alarms >

To silence an alarm, press and hold the **MODE** button on the tachometer. For additional information and a possible solution, reference your User's manual. If multiple alarms are present the display will automatically scroll through the current alarm messages. Alarm messages will be stored internally for later troubleshooting if required. All current alarms will be shown while in Normal Mode by scrolling.

Scrolling - Normal Operating Mode

▼ ▲ The "Up" or "Down" buttons will scroll through active displays.

Making a Selection

MODE Press the "MODE" button for longer than one second to make a selection.

Exiting a Menu

MODE A short press of the "MODE" button for less than 1 second will exit from a menu. 1 minute of inactivity will exit.

Changing the Current Mode

MODE From the "Normal" mode press the "MODE" once to view the menus.

▼ ▲ The "Up" or "Down" button will scroll through the available options.

MODE Press the "MODE" button for longer than one second to make a selection.

Brightness Adjustment (TACH only)

MODE From the "Normal" mode press the "MODE" button once.

▼ ▲ Scroll until "LIGHTING" is selected.

MODE Press the "MODE" button for longer than one second to make a selection.

Select "ADJUST DIAL" to adjust all instruments' lighting levels.

Select "ADJUST LCD" to adjust the display brightness.

Select "ADJUST SYSTEM" to adjust the overall brightness.

▼ ▲ Press the "Up" or "Down" button to increase or decrease lighting level.

MODE Press the "MODE" button for longer than one second to make a selection.

Contrast Adjustment (TACH only)

MODE Press the "MODE" button once.

▼ ▲ Scroll until "CONTRAST" is selected

MODE Press the "MODE" button for longer than one second to make a selection.

▼ ▲ Press the "Up" or "Down" button to increase or decrease the contrast in the Tachometer and Speedometer's display.

MODE Press the "MODE" button for longer than one second to make a selection.

Trip Data View/Reset (TACH only)

▼ ▲ From the "Normal" mode hold the "Up" and "Down" buttons for 1 second

▼ ▲ Scroll to "TRIP A", "TRIP B" or "SEASON"

MODE Press the "MODE" button for longer than one second to make a selection.

▼ ▲ Scroll to "VIEW" or "RESET DATA"

MODE Press the "MODE" button for longer than one second to make a selection.

Fuel Management (TACH only)

MODE From the "Normal" mode press the "MODE" button once.

▼ ▲ Scroll until "FUEL LEVEL" is selected.

MODE Press the "MODE" button for longer than one second to make a selection.

▼ ▲ Scroll to the desired tank.

MODE Press the "MODE" button for longer than one second to select a tank.

▼ ▲ Scroll to desired fuel function.

*It is recommended to adjust the fuel level(s) after every refueling to achieve the highest level of accuracy for fuel management calculations.

Notes:

1. **Poor battery condition could result in gauges performing self test unexpectedly.**
2. Some discoloration of the display may occur if the gauge is left in direct sunlight for a prolonged period. Adjusting the contrast will improve visibility.
3. Certain polarized sunglasses will cause the display to become illegible.
4. Use only soap and water when cleaning your TS3000 instruments. Certain chemical cleaners will damage the fog-resistant lens on your instruments.

Bridge Card for TS3000 tachometer

< Applicable models >

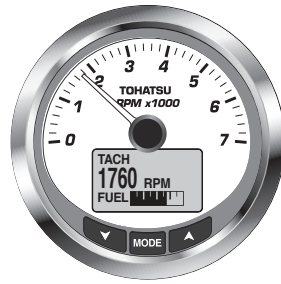
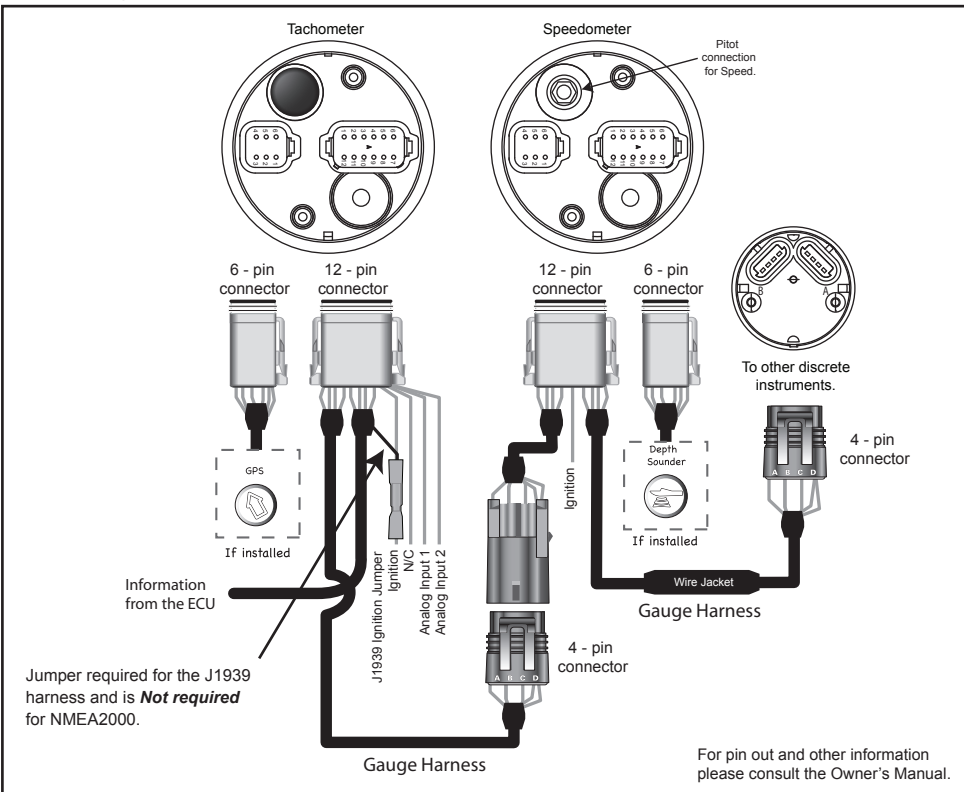
Applicable models

MFS25/30, MFS40/50, BFT models, TLDI models

Your TS3000 Instrument Package comes equipped with factory recommended settings and displays. Basic Initialization is necessary for the system to perform properly, please reference the Owner's Manual for additional information.

*Please access to " <http://www.tohatsu.co.jp/en/boat/download/> " to download the Owner's Manual

< Wiring >



(P/N: 3KY-72638-*)

Scrolling - Normal Operating Mode

▼ ▲	The "Up" or "Down" buttons will scroll through active displays.
-----	---

Making a Selection

MODE	Press the "MODE" button for longer than one second to make a selection.
-------------	---

Exiting a Menu

MODE	A short press of the "MODE" button for less than 1 second will exit from a menu. 1 minute of inactivity will exit.
-------------	--

Changing the Current Mode

MODE	From the "Normal" mode press the "MODE" once to view the menus.
▼ ▲	The "Up" or "Down" button will scroll through the available options.
MODE	Press the "MODE" button for longer than one second to make a selection.

Brightness Adjustment (TACH only)

MODE	From the "Normal" mode press the "MODE" button once.
▼ ▲	Scroll until "LIGHTING" is selected.
MODE	Press the "MODE" button for longer than one second to make a selection.
	Select "ADJUST DIAL" to adjust all instruments' lighting levels.
	Select "ADJUST LCD" to adjust the display brightness.
	Select "ADJUST SYSTEM" to adjust the overall brightness.
▼ ▲	Press the "Up" or "Down" button to increase or decrease lighting level.
MODE	Press the "MODE" button for longer than one second to make a selection.

Contrast Adjustment (TACH only)

MODE	Press the "MODE" button once.
▼ ▲	Scroll until "CONTRAST" is selected
MODE	Press the "MODE" button for longer than one second to make a selection.
▼ ▲	Press the "Up" or "Down" button to increase or decrease the contrast in the Tachometer and Speedometer's display.
MODE	Press the "MODE" button for longer than one second to make a selection.

Trip Data View/Reset (TACH only)

▼ ▲	From the "Normal" mode hold the "Up" and "Down" buttons for 1 second
▼ ▲	Scroll to "TRIP A", "TRIP B" or "SEASON"
MODE	Press the "MODE" button for longer than one second to make a selection.
▼ ▲	Scroll to "VIEW" or "RESET DATA"
MODE	Press the "MODE" button for longer than one second to make a selection.

Fuel Management (TACH only)

MODE	From the "Normal" mode press the "MODE" button once.
▼ ▲	Scroll until "FUEL LEVEL" is selected.
MODE	Press the "MODE" button for longer than one second to make a selection.
▼ ▲	Scroll to the desired tank.
MODE	Press the "MODE" button for longer than one second to select a tank.
▼ ▲	Scroll to desired fuel function.

*It is recommended to adjust the fuel level(s) after every refueling to achieve the highest level of accuracy for fuel management calculations.

Notes:

1. **Poor battery condition could result in gauges performing self test unexpectedly.**
2. Some discoloration of the display may occur if the gauge is left in direct sunlight for a prolonged period. Adjusting the contrast will improve visibility.
3. Certain polarized sunglasses will cause the display to become illegible.
4. Use only soap and water when cleaning your TS3000 instruments. Certain chemical cleaners will damage the fog-resistant lens on your instruments.

< Silence Alarms >

To silence an alarm, press and hold the **MODE** button on the tachometer. For additional information and a possible solution, reference your User's manual. If multiple alarms are present the display will automatically scroll through the current alarm messages. Alarm messages will be stored internally for later troubleshooting if required. All current alarms will be shown while in Normal Mode by scrolling.