

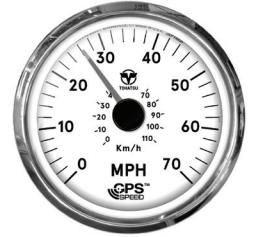
## Instruction Manual for GPS Speedometer

### ⚠ CAUTION

Disconnect the battery during installation. Tighten nuts on the back clamp only slightly more than you can tighten with your fingers. **Six inch-pounds of torque are sufficient. Over tightening may result in damage to the instrument and may void your warranty.** Use stranded, insulated wire not lighter than 18 AWG. Be certain wire insulation is not in danger of melting from engine or exhaust heat or interfering with moving mechanical parts.



( 3NV726720M )



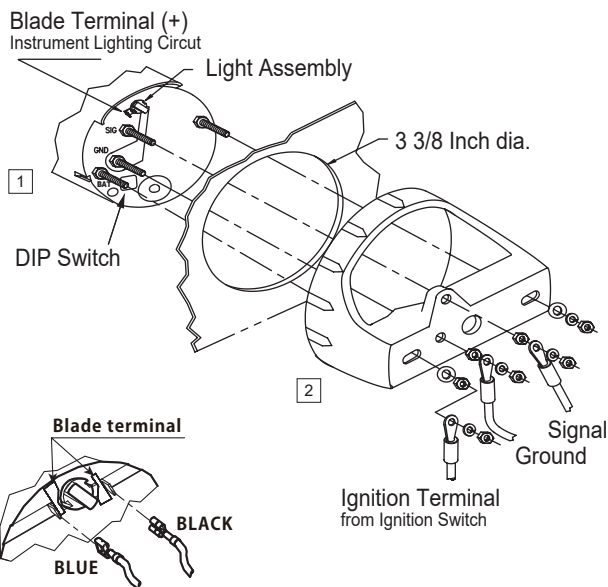
( 3NW726720M )

### < Components >

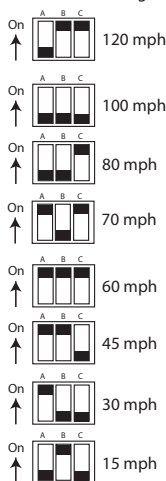
Ref.	Parts No.	Description	Qty
1	3NV726720M 3NW726720M	GPS Speedometer	1
2	—	*Mounting Bracket	1
3	—	*Mounting Hardware	1

### < Installation >

1. Disconnect the battery.
2. Cut a 3 3/8" (85 mm) diameter hole in the dash allowing a clearance of 3" (80 mm) for wires. Mount the GPS Speedometer with the backclamp supplied. Use the supplied washers and nuts and tighten
3. Connect a wire to the SIG post on the speedometer to the 12 vDC side of the ignition.
4. Connect a wire to the BAT post on the speedometer to the 12 vDC. It is recommend to connect this to an always on 12 vDC source.
5. Connect a wire to the (+) blade on the lighting assembly on the speedometer to the 12 vDC side of the navigation lighting circuit or instrument dimmer switch.
6. Connect a wire to the GND post on the speedometer to the electrical ground, generally available in several locations at or near the instrument panel.
7. Reconnect the battery.



#### DIP Switch Settings



### < Operation >

1. After turning on the power the speedometer will perform a full scale sweep and go to 5 MPH.
2. Once the Speedometer has a GPS Lock on the satellite the Pointer will read current speed.

### < Trouble Shooting >

1. Verify the unit is receiving both supply and constant power.
2. If the Speedometer is not providing the correct speed indication check the DIP switch settings on the back of the Speedometer. The setting should match the dial range. (See Wiring Diagram)

### < General Safety Information >

Please read this manual and follow its instructions carefully. Of particular importance is information preceded by the words "WARNING," "CAUTION," and "Note." Always pay special attention to such information to ensure safe operation of the outboard motor at all times.

#### ⚠ WARNING

**Failure to observe could result in severe personal injury or death, or property damage.**

#### ⚠ CAUTION

**Failure to observe could result in personal injury or property damage.**

**NOTE :** Indicates special information to make maintenance easier or instructions clear.