

# Installation Manual for GPS Speedometer

## <Applicable Models>

ALL models

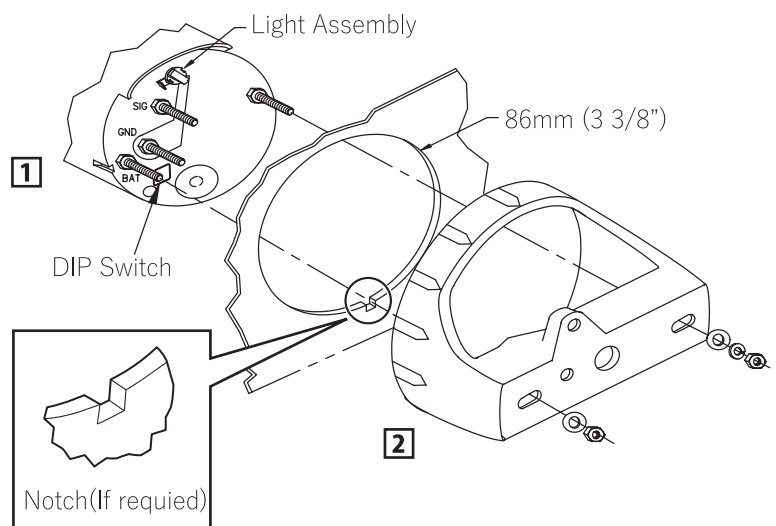
## <Features>

GPS information is gathered from an internal GPS antenna. No external antenna required. The GPS Speedometer uses a highly accurate 48 channel GPS receiver. The accuracy is +/- 1mph

Speed data is shown by an analog pointer. This pointer is driven by a digital stepper motor for increased accuracy and minimized pointer bounce during vessel operation.

## <Components>

No.	Description	Q'ty
1	GPS SPEEDOMETER	1
2	BACK CLAMP	1
	MOUNTING HARDWARE	1
	SPEEDOMETER LEAD WIRE	1
	ASSIST CORD (RED)	1



P/N: 3KY-72673-0  
Face color: Black



P/N: 3UW-72673-0  
Face color: White

## <General Safety Information>

Please read this manual and follow its instructions carefully. The following safety symbols and signal words are used throughout the manual to alert you to possible hazardous situations.

### CAUTION

Failure to observe could result in personal injury or property damage.

### Note

Indicates special information to make maintenance easier or instructions clear.

< **Installation** >

**⚠ CAUTION**

**Disconnect battery during installation.**

**Tighten nuts on back clamp only slightly more than you can tighten with your fingers. 0.7 N-m(6in-lbs, 7kg-cm) is sufficient.**

**Over tightening may result in damage to the instrument and may void your warranty. Use stranded, insulated wire not smaller than 18 AWG. Be certain wire insulation is not in danger of melting from engine or exhaust heat or interfering with moving mechanical parts.**

1. Disconnect the battery.
2. Cut a 86mm(3 3/8") diameter hole in the dash allowing a clearance of 80mm (3") for wires. Mount the GPS SPEEDOMETER with the back clamp supplied. If required, cut a 4.5mm (0.175") wide by 3mm (0.115") deep notch to accept the key on the case. See detail in the diagram in the Components section. Use the supplied washers and nuts and tighten.
3. Connect the red color lead wire which is from SIG post on the GPS SPEEDOMETER to red color lead wire of the METER LEAD WIRE to obtain 12V with key "ON".
4. Connect the red color lead wire which is from BAT post on the GPS SPEEDOMETER to the 12V. It is recommended to connect supplied SPEEDOMETER LEAD WIRE and ASSIST CORD (RED) to an always on 12V source in order to quickly acquire satellites . In this case, 2 way cords end of the ASSIST CORD (RED) connect to between MAIN SWITCH ASSY and PTT SWITCH red color cord terminals in the REMOTE CONTROL HEAD in order to obtain constant 12V(even with key "OFF"). Please refer Wiring Diagram and Appendix.

< **Operation** >

1. After turning on the power the GPS SPEEDOMETER will perform a full scale sweep and go to 5 MPH.
2. Once the speedometer has a GPS Lock on the satellite the Pointer will read current speed.

< **Trouble Shooting** >

1. Verify the unit is receiving both supply and constant power.
2. If the speedometer is not providing the current speed indication check the DIP switch setting on the back of the GPS SPEEDOMETER. The setting should match the dial range as below:

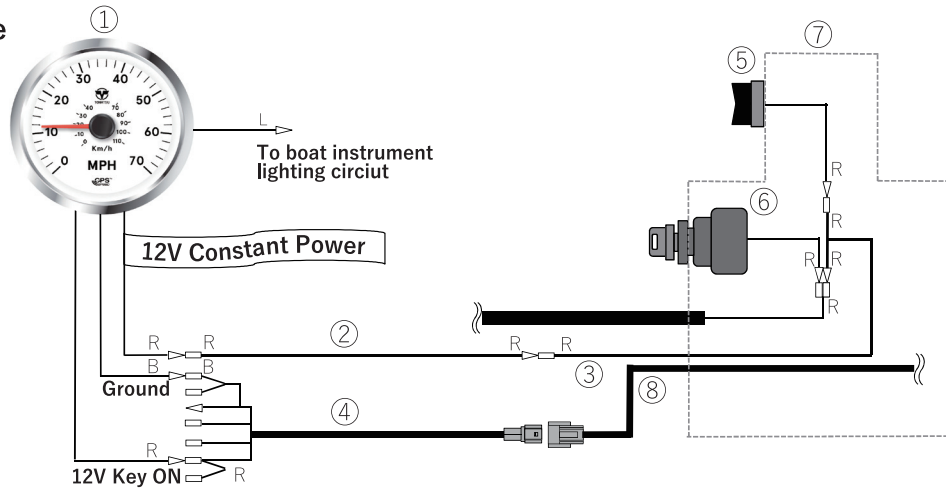


**Note**

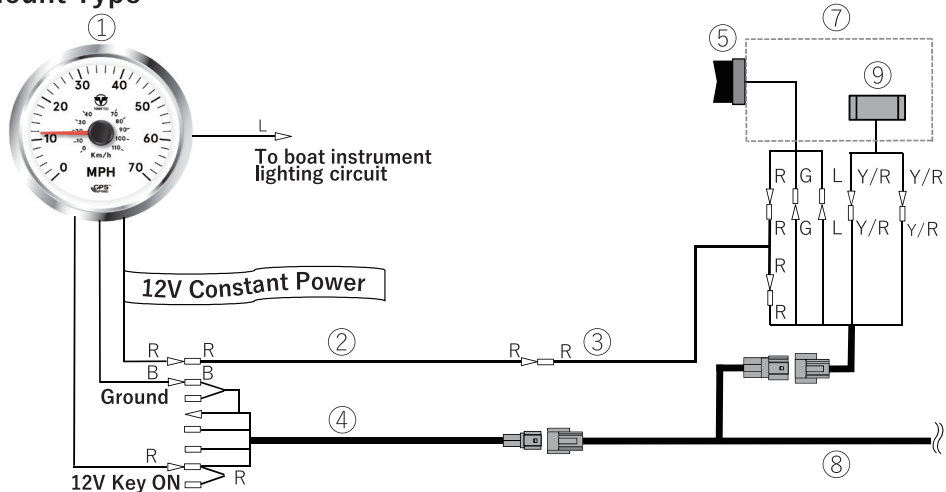
To change light bulb, twist the Light Assembly one-eighth turn counterclockwise until it pops out. Bulb pulls straight out of the Light Assembly. The tachometer requires a GE No.194 instrument lamp.

**<Wiring Diagram >**

**Side Mount Type**



**Top and Flush Mount Type**



No.	Parts Number	Description
①		SPEEDOMETER
②	3KY-72538-0	SPEEDOMETER LEAD WIRE
③	3KY-72546-0	ASSIST COARD (RED)
④		METER LEAD WIRE
⑤		PTT SWITCH
⑥		MAIN SWITCH ASSY
⑦		REMOTE CONTROL HEAD ASSY
⑧		CORD ASSY B
⑨		NEUTRAL SWITCH

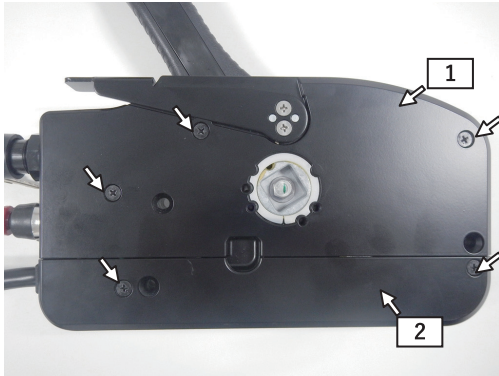
**Color Code**

**B:** black  
**L:** blue  
**R:** red  
**G:** Green  
**Y/R:** Yellow/Red

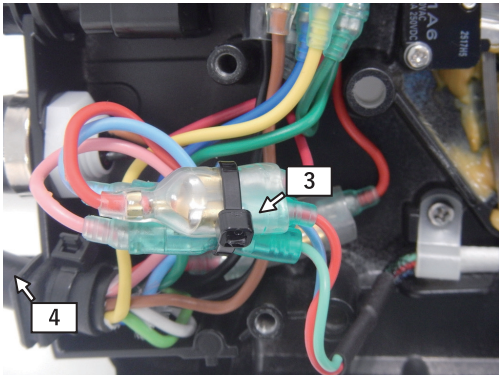
<Appendix>

Installation of the Assist Cord (Red) to the Side Mount Remote Control Head

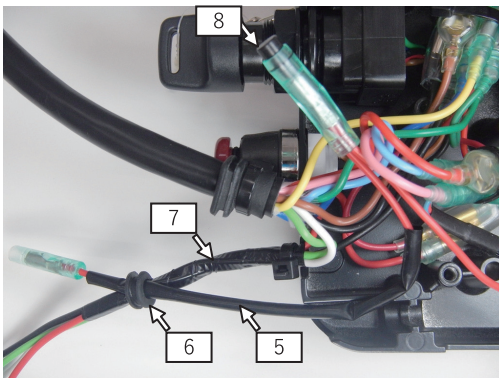
- 1** Remove the Rear Housing [1] and Rear Panel [2] by loosening and removing the five screws.



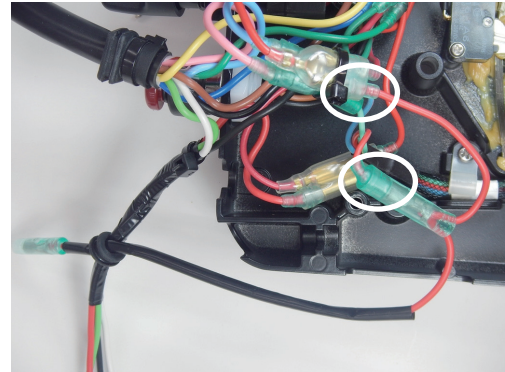
- 2** Remove the male bullet connector of PTT Switch [3] from the twin female connector of the Cord Assy. B [4].



- 3** Insert the Speedometer Lead Wire [5] through grommet [6] with the Tachometer Lead Wire [7] and remove the terminal plug [8].



- 4** Connect the connectors of the Speedometer Lead Wire to the disconnected connector of PTT Switch and the twin female connector of Cord Assy. B.



- 5** Store the bound lead wires so as not to pinch with the Rear Housing and Rear Panel. Make sure that the grommets are placed correctly their location.



- 6** Tighten the five screws evenly.

