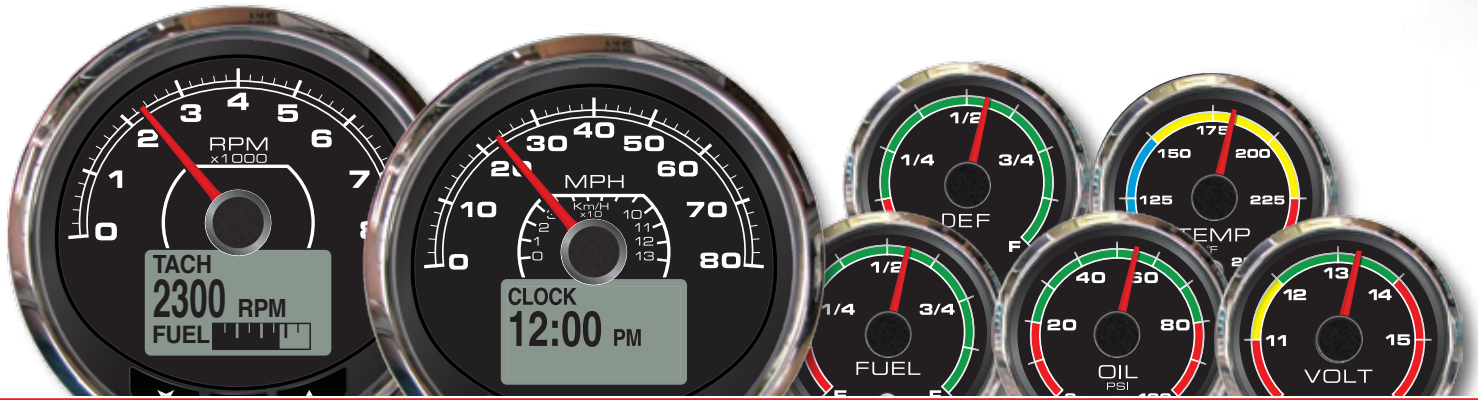


ENGINEERED *Excellence*™



# ENGINEERED *Excellence*<sup>TM</sup>

With some of the most sophisticated information and instrumentation systems in the industry, and a range of products that are rugged enough to survive on military Humvee and heavy construction equipment, or with innovative styling for your boat or RV, Thomas G. Faria Corporation has the right products to meet future global needs for rugged, reliable, and innovative instrumentation.



## An ISO9001-2008 Registered Company

The Thomas G. Faria Corporation has been manufacturing "World Class" Instrumentation in Uncasville, CT for more than 50 years (Established in 1956) and has grown from a company that primarily produced tachometers for the marine and auto industries into a company that today offers a multitude of analog and digital engine monitoring instruments to a wide range of global markets.

In the early 1960's Faria started producing tachometers with the Ford Motor Company. The first application was for the Comet Rally Pack and the Falcon Sprint. Faria later designed and developed tachometers for the famed Mustang and Shelby Cobra. Faria has supplied Volkswagen of America, Chrysler Corp. During this period Faria was producing more than a million tachometers per year.

By the Late 1970's Faria's customer base expanded to include such equipment manufactures as Caterpillar, Allis Chalmers, International Harvester Bobcat, Stationary power equipment and Gen-set manufacturers, all who found Faria Instruments to be rugged enough to withstand the most harsh environments.

Faria became a major supplier of instrumentation to the US Military in the 1980's and is one of only a few companies that has received the ABVM Gold supplier award for on time delivery and quality for seven consecutive years. Of course Quality has always been our first concern.

In 1997 Faria became an ISO9001 registered company. Today we continue to maintain the same commitment to Quality as we introduce new technology to meet the growing needs of our customers.

In the 1990's Faria developed the first programmable electronic speedometer for motorcycles, ATV's and snowmobiles and was a major supplier to Harley Davidson and Polaris. During this period Faria also became the leading supplier of instruments to the recreational boat market.

Today we have made the transition from an electric and mechanical gauge manufacturer to an electronics hardware and software design company with in-house pick and place assembly lines for Surface Mount Technology (SMT) circuitry.

Instruments for  
**Automotive**  
**Commercial**  
**Industrial**  
**Performance**  
**Recreational**  
**Marine**  
**Military**



**Rugged • Reliable • Innovative**

Made in the USA



# Stand Alone J1939 Gauge Sets



SAE J1939



Faria offers a complete line of J1939 standard and Stand Alone monitoring solutions for your CAN Bus engines.

With some of the most sophisticated vehicle information and instrumentation systems in the industry, Faria Corporation has the right products to meet future global needs for rugged, reliable and innovative instrumentation with Engineered Excellence™.

- J1939 CAN Bus Instruments
- **Stand Alone technology** - Each instrument receives information directly from the J1939 Bus
- Can be connected in standard J1939 harness configurations
- Available in a wide variety of styles.



## Military grade

- J1939 CAN Bus Instruments
- Stand alone technology - Each instrument receives information directly from the J1939 Bus
- Available in a wide variety of styles
- Designed and manufactured to MIL-STD-1275, MIL-STD-465, MIL-STD-464, MIL-STD-810 and SAE J113-13 specifications
- Multiple Analog and Digital Inputs to reduce system costs
- Manufactured in Uncasville, CT USA
- Wide variety of instruments including 3-1 and 4-1 multi-function gauges, 4-inch and 5-inch Speedometers and Tachometers and a complete suite of 2-inch discreet instruments i.e., Fuel Level, Temperature, Volts and Oil Level



## MG1000

The MG1000 is the stepping stone of digital instrumentation. This innovative digital gauge system requires no LCD's, no system initialization, no menu setups and no user manual interaction for use - ever! Just install and go!

The MG1000 gauge system displays engine ECU data and alarms. Installation is simplified by reducing wiring and setup time. Our instruments communicate with the engine ECU for the most accurate information and error codes.

This system is the lowest cost, most user-friendly digital product in the market for customers installing digital technology. Multiple analog inputs and warning lights reduce cost while still providing the customer with everything they need.

Upgrade to the MG3000 system for an even wider variety of options and features. The Faria product suite offers a multitude of accessory gauges available to connect to the MG1000 system including a 2" fuel flow gauge to show fuel economy. The combinations are limitless!!

Specifically designed to work with the leading engine manufacturers.

Compatible with MG3000 systems.



**SAE J1939**

## Features and Benefits

- Can be directly connected to J1939 CAN Bus systems
- "Daisy Chain" connections, add additional features, connect the MG3000 with the same harness
- NMEA0183 input for GPS Speed
- A single Tachometer can monitor up to 4 analog signals
- Utilizes both analog and digital inputs to reduce system cost
- Stepper motor gauges (for greater accuracy and durability)
- Deutsch and Packard water tight connectors
- LED lighting is standard
- Custom cosmetic options upon request
- Multiple 5"/4"/2" discrete instruments are available

## GPS Speedometer

- Available in multiple Speed ranges (15-120 MPH and 25-200 KPH)
- Premium LED back-lit dials
- No external GPS antenna required
- Available LCD displays Compass Rose heading and Actual heading (COG)
- Ultra fast Satellite acquisition time (TTFF) 1 second from Hot start
- Speed Accuracy of +/- 1 MPH
- Heading Accuracy of +/- 1 Degree
- Digital stepper motor driven pointers
- Packard and Deutsch connectors available
- Custom OEM styles and ranges available



The GPS Speedometer is a drop in replacement for your current speedometer to match your existing instrument dash.

GPS information is gathered from an internal GPS antenna. No external antenna required. The Faria GPS Speedometer uses a highly accurate 48 channel GPS receiver. You can be sure that the Faria GPS Speedometer is giving you the most accurate GPS information available on the market today.

Course Over Ground (COG) and actual heading (compass heading over ground) are displayed on the optional digital LCD.

Tier 4 Compatible

# MG3000

*A user friendly digital engine monitoring solution.*

## Features

- Utilizes both analog and digital inputs to reduce system cost
- GPS enabled to display GPS Speed, COG, Heading, and Clock
- Lighted buttons for ease of use with tactile feedback.
- Stepper motor driven pointers (for accuracy and durability)
- User definable screens and alarms
- Custom cosmetic options upon request
- Deutsch and Packard connectors - *Plug and Play*

This system offers easy installation and waterproof connectors from engine ECU to instruments.

- Fog Resistant Lens
  - LED lighting and RGB LEDs for multi-color light options
- |              |        |           |  |
|--------------|--------|-----------|--|
| Yellow       | Cyan   | Goldenrod | White, Yellow, Green Yellow, Green, Dark Sea Green, Cyan, Blue, Purple, Pink, Goldenrod or Tan |
| Gr. Yellow   | Blue   | Tan       |  |
| Green        | Purple | White     |  |
| Dk Sea Green | Pink   | Red       |  |
|              |        |           |  |
- Easily converts from US standard measurements to Metric
  - Up to 5 Languages available
  - Engine Diagnostic Error codes stored in dedicated screen
  - Analog inputs for DEF, Air Temperature, Water Pressure, Fuel Level and other liquid tank levels.
  - LCD flashes Red for engine critical Alarms, Yellow for cautionary Alarms
  - Multiple 5"1/4"/2" instrument and dash set options in Faria Standard series
  - All standard J1939 engine data PGNs supported, proprietary PGN data supported on request.
  - Remote button options  
Connect the MG3000 to a remote input device for control of the screens and data viewing.



**SAE J1939**  
**SAE J1708**

## Benefits

- Speedometer or Tachometer instruments.
- LCD data are available in 5 languages.
- Trip A/B Data.
- Pop-Up screens for quick information display and warnings.
- Alarm codes with suggested actions.
- Data log for fault codes.
- A single MG3000 can monitor up to 5 fuel tanks.
- Calibrate Fuel Level and Speed in gauge.
- Initialization mode to assist in gauge set-up.
- Superior Sunlight readable display.

**Available in 4 and 5 inch**  
**With or with out buttons.**

## Multiple Discrete Gauges Available



# J1939 Control Panels

The M150L Series Control Panels are a universal platform of products designed to control J1939 electronically governed engines. With a family of panel configurations ranging from panel mount to single gauge to multi-gauge and a NEMA 4X enclosure virtually any installation can be met. If a panel or enclosure is not required the M150L series offers a kit containing all necessary parts that can be mounted in a customer specific panel design.

With a full featured J1939 interface the M150L series panels provide a complete interface for virtually any SAE J1939 data. With standard features such as "TSC1 Throttle Control", "Fuel Level Input", "Engine Oil Pressure" and "Engine Shutdown", the M150L provides the most features in the price range. The gateway interface is available in a 4" or 5" configuration. The M150L15 configuration can be shipped with variety of gauge configurations including; oil pressure, engine temperature, voltage and fuel expansion gauges.

Using the traditional look of a round gauge and the latest microprocessor technology the M150L series products provide the user with a traditional "look and feel" for controlling the latest electronic engines. Incorporating the latest technology allows the M150L products to be fully scalable from a single gauge solution to a full feature multi-gauge applications.



## Analog and Digital Instrument Cluster designs



## Multifunction Snap-In Gauges

Discrete gauges with an easy to read Tachometer/Hour meter LCD, simplifies your dash.

Available as:

- Voltmeter
- Oil Pressure
- Temperature
- Fuel Level gauge

A simple push of the fingers installs your gauge securely. No nuts, bolts or bruises required.

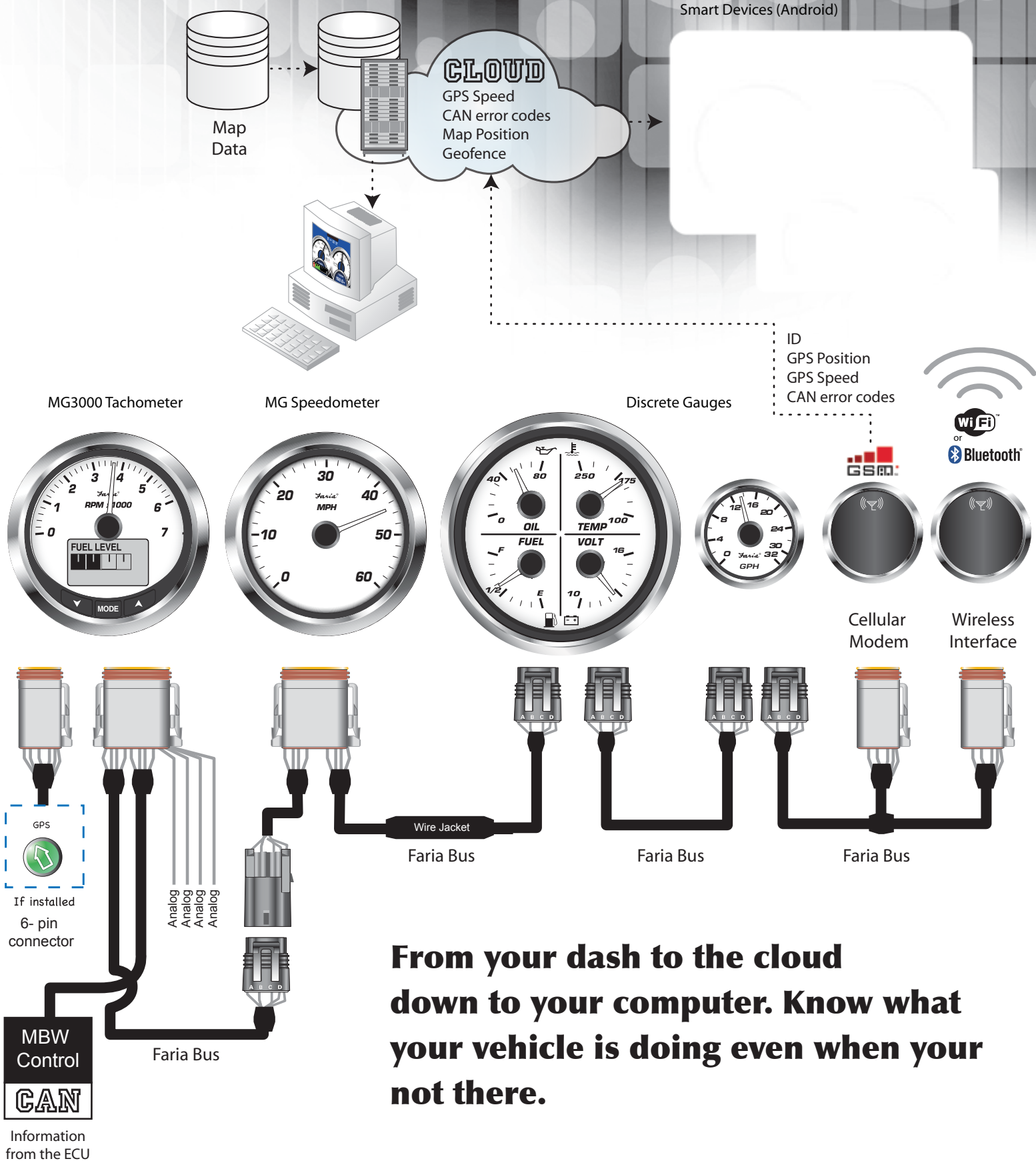
## Programmable 4000 RPM Tachometer with Hourmeter



This tachometer can be programmed to function with 1, 2, 3, 4, 6 and 8 cylinder gasoline engines or with diesel engines, and can be used with most ignition coils including Alternator and Mag pickup inputs.

The analog looking dial and pointer sweep is driven by a digital stepper motor providing greater accuracy and dependability than magnetically wound gauges. You get the advantages of digital instrumentation with the look and feel of the analog gauges.

# Telematics System Diagram



**From your dash to the cloud  
down to your computer. Know what  
your vehicle is doing even when your  
not there.**



**Made in the USA for more than 50 years.**



**David M. Hickey**  
President and CEO



**Jason Blackburn**  
Vice President  
Sales and Marketing  
jasonb@faria-instruments.com

ext. 1212

***Commercial and Military Sales***



**Bill Desjardin**  
Commercial & Military  
Sales Manager  
bill.d@faria-instruments.com

ext. 1236

***Customer Service & Warranty***



**Jason Clark**  
Customer Service Manager  
faria@faria-instruments.com

ext. 1229



**Martin Crabb**  
Industrial and Military Sales  
Representative  
martinc@faria-instruments.com

ext. 1214

Customer Service & Warranty:  
**800-473-2742**

***Sales Support***

**Monique Holdridge**  
Administrative Assistant  
moniqueh@faria-instruments.com  
ext. 1221

***Marine Sales***



**Frank Ahlbin**  
Marine Sales Manager  
franka@faria-instruments.com

ext. 1303

***Accounting***

**Todd Shorts**  
Controller  
todd@faria-instruments.com  
ext. 1223



**Bob Chayrigues**  
Aftermarket & Export Sales  
bobc@faria-instruments.com

ext. 1262

***Order Processing***

**Miriam Wilson**  
Order Processing Coordinator  
miriamw@faria-instruments.com  
ext. 1267



**John Alexopoulos**  
OEM Sales Representative  
Marine Sales  
johna@faria-instruments.com

ext. 1301

**Sam Fortes**  
Aftermarket Order Processing Coordinator  
sam@faria-instruments.com  
ext. 1208

***Marketing & Advertising***

**Thomas Wedegis**  
Marketing Coordinator  
thomasw@faria-instruments.com  
ext. 1285



**www.faria-instruments.com  
or call 860-848-9271**

P.O. Box 983 • Uncasville, CT 06382 Tel: 860-848-9271 Fax: 860-848-2704

fm-001-0014 rev A 01/2013