

Battery Condition Indicator



Benefits

- Available for Voltage ranges from 12, 48 and 72 volts
- Know how much energy is left in your battery
- Works equally well on all 12 volt deep cycle and starting batteries, including sealed types
- Back lit for night viewing or use in bad weather
- Available in all Faria Standard styles
- Mounts in a standard 2 1/16 inch hole

Conventional voltmeters are very good at showing how many volts there are in your electrical system. While this is a good enough indication of your electrical systems operation, a voltmeter is all but useless when you need to know just how much energy is left in your battery.

A Battery Condition Indicator eliminates all the guesswork. The expanded scale accurately displays the battery's usable energy, telling you when to recharge.. even when it's time to replace your battery.

A must where one or more batteries are used. The Faria Battery Condition Indicator is an accurate and inexpensive solution for knowing exactly how much power remains in your battery.

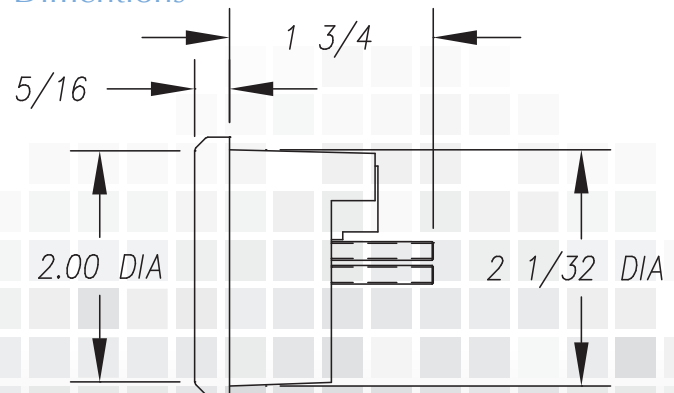
Features

Meets or exceeds the specifications MIL-STD-202 for shock and J1455 for vibration and voltage tolerance.

Standard Styles available.


Chesapeake Black	VP7919	14723
Chesapeake Black SS	VP7910	13726
Chesapeake White	VP7918	14823
Chesapeake White SS	VP7911	13823
Coral	VP7903	13012
Dress White	VP7909	13125
Euro Black	VP7901	12823
Euro White	VP7908	12933
Euro White Gold	VP7900	
Pro Red	VP7912	14623
Signature Gold	VP7917	14523

Dimensions



Faria Corporation
P. O. Box 983
Uncasville, CT 06382
860.848.9271
Fax: 860.848.2704

Beede Instrument Company, Inc.
88 Village Street
Penacook, NH 03303
603.753.6362
Toll-free: 800.451.8255
Fax: 603.753.6201

 Made in the USA

fm-001-0095 rev A 01/2014



www.faria-instruments.com • www.beede.com

