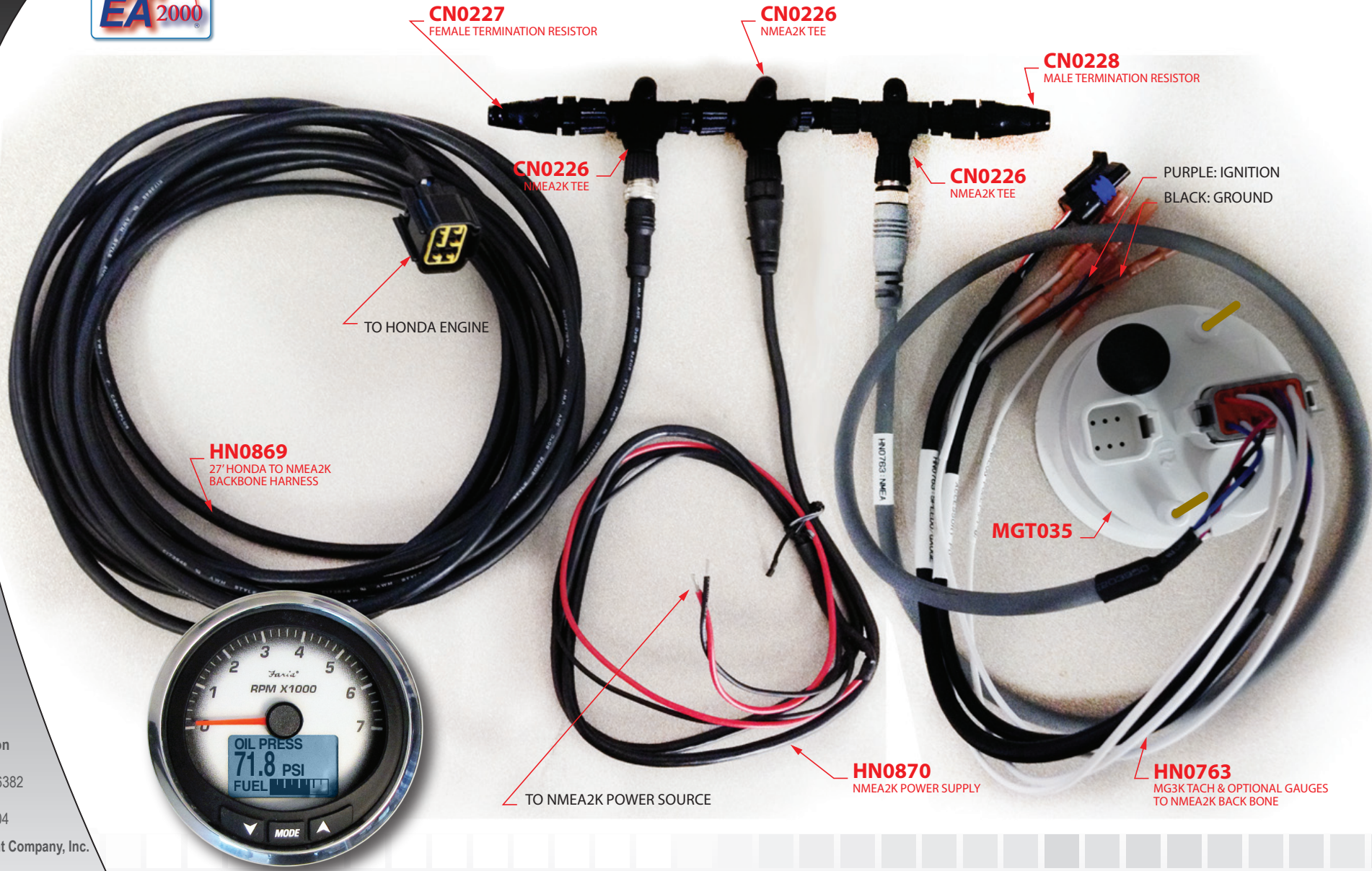


# NMEA2000 Harness to CAN connections



**CN0227**  
FEMALE TERMINATION RESISTOR

**CN0226**  
NMEA2K TEE

**CN0228**  
MALE TERMINATION RESISTOR

**CN0226**  
NMEA2K TEE

**CN0226**  
NMEA2K TEE

PURPLE: IGNITION  
BLACK: GROUND

TO HONDA ENGINE

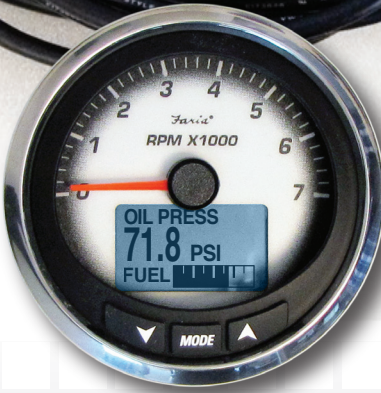
**HN0869**  
27' HONDA TO NMEA2K  
BACKBONE HARNESS

TO NMEA2K POWER SOURCE

**MGT035**

**HN0870**  
NMEA2K POWER SUPPLY

**HN0763**  
MG3K TACH & OPTIONAL GAUGES  
TO NMEA2K BACK BONE



Faria Corporation  
P. O. Box 983  
Uncasville, CT 06382  
860.848.9271  
Fax: 860.848.2704

Beede Instrument Company, Inc.  
88 Village Street  
Penacook, NH 03303  
603.753.6362  
Toll-free: 800.451.8255  
Fax: 603.753.6201

Made in the USA

fm-001-0096 rev A 01/2014

ENGINEERED *Excellence*™



www.faria-instruments.com • www.beede.com

