



# Aftermarket Catalog - 2020



# We Have Moved

75 North Frontage Road, Suite 106, North Stonington, CT 06359



## Rugged • Reliable • Innovative

Faria Beede Instruments, Inc. has been manufacturing gauges and instruments in Connecticut for more than 60 years. The company offers analog and digital engine monitoring and telematics solutions for a wide range of global marine, military, industrial and performance industries.

With the Indiana facilities we have doubled our manufacturing capabilities and improved our state of the art electronic board building capabilities, this change makes Faria Beede digital instruments even more reliable than ever before.

One of the few remaining vertically integrated U.S. manufacturers of SAE J1939 instrumentation, Faria Beede provides some of the best turnaround times and responsive support in the industry. This is only possible by having total control of all aspects of design, engineering and manufacturing.

We have completed our move to North Stonington, CT. This new building offers better control of our manufacturing processes the 200 year old building we were in could not. We are all excited for this move and look forward to the changes it will bring.

Whether your needs are simple or for more advanced computerized engines, Faria Beede has the instrumentation solution that is right for you.



Instruments for

**Automotive**  
**Commercial**  
**Industrial**  
**Performance**  
**Recreational**  
**Marine**  
**Military**

[www.FariaBeede.com](http://www.FariaBeede.com)



**Made in the USA**

## Featured



Boxed Sets  
(page 3)



GPS Speedometer  
(page 4)

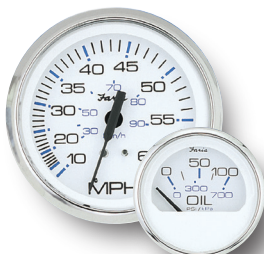


Depth Sounders  
(page 5)

## Classic Styling



Chesapeake Black SS  
(page 7)



Chesapeake White SS  
(page 8)



Coral  
(page 9)



Dress White  
(page 10)



Euro  
(page 11)



Euro White  
(page 12)



Kronos  
(page 13)



Professional Red  
(page 13)

## New



Platinum  
(Fog Resistant Lens)  
(page 14)



Spun Silver  
(page 14)

## Accessories

- Transducers and Senders (page 16)
- Accessories (page 17)
- Specifications (page 18)





Packaged and ready for the display counter.

These Boxed Sets offer a complete set of gauges ready to install.

Available in Chesapeake White Stainless Steel, Chesapeake Black Stainless Steel, Euro, Euro White, Dress White, Platinum (Fog Resistant Lens), Spun Silver and Kronos styles.

**The Boxed Sets offer a complete set of gauges ready to install.**

## Standard Boxed Sets

### Featured



Style	Factory	Description	
Euro	KT9799	Inboard Set	6 gauge
Euro	KT9796	Outboard Set	4 gauge
Euro White	KT9798	Inboard Set	6 gauge
Euro White	KT9795	Outboard Set	4 gauge
Dress White	KT9797	Inboard Set	6 gauge
Dress White	KT9794	Outboard Set	4 gauge
Chesapeake SS White	KTF001	Inboard Set	6 gauge
Chesapeake SS White	KTF002	Outboard Set	4 gauge
Chesapeake SS Black	KTF003	Inboard Set	6 gauge
Chesapeake SS Black	KTF004	Outboard Set	4 gauge
Platinum	KTF0186	Inboard Set	6 gauge
Platinum	KTF0185	Outboard Set	4 gauge
Kronos	KTF024	Inboard Set	6 gauge
Spun Silver	KTF0184	Inboard Set	6 gauge

### Boxed Sets with GPS Speedometers

Chesapeake Black SS	KTF064	Inboard Set	6 gauge
Chesapeake White SS	KTF063	Inboard Set	6 gauge



The **Outboard Set** comes complete with Speedometer and Pitot, Tachometer, Fuel gauge and Voltmeter.



The **Inboard Set** comes with Speedometer and Pitot, Tachometer, Fuel gauge, Voltmeter, Water Temp gauge and Oil Pressure gauge.



# GPS Speedometer

## Featured

The GPS Speedometer is a drop-in replacement for your current speedometer.

The GPS **antenna is built-in** to the instruments and does not require an external antenna. **No additional hardware is required.**

The Faria Beede GPS Speedometer uses a highly accurate 48 channel GPS receiver. You can be sure that the GPS Speedometer is giving you the most accurate GPS information available on the market today.

Speed is shown by an analog pointer. This pointer is driven by a digital stepper motor for increased accuracy and minimized pointer bounce.



## GPS Speedometers

Catalog#	Factory #	Style	Range	Display	Case
F33726	SGP004	Ches. Black SS	60 MPH	LCD	
F33749	SGP114	Ches. Black SS	60 MPH		Studded
F33829	SGP010	Ches. White SS	80 MPH	LCD	
F33730	SGP012	Ches. Black SS	80 MPH	LCD	
F33826	SGP003	Ches. White SS	60 MPH	LCD	
F33839	SGP113	Ches. White SS	60 MPH		Studded
F33147	SGP111	Dress White	60 MPH		Studded
F32816	SGP110	Euro Black	60 MPH		Studded
F22010	SGP128	Platinum	60 MPH		Studded

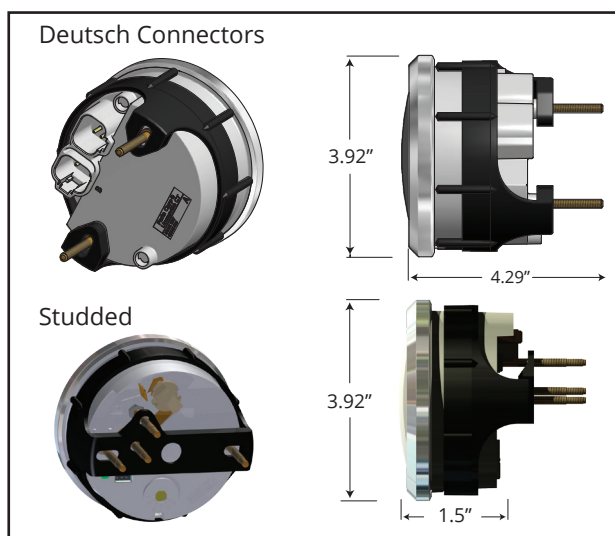


**Antenna built in.**  
No additional parts needed.

## Features & Benefits

- Available in multiple speed ranges in MPH, KPH, and KNOTs
- Premium LED back-lit.
- Available with and without LCD displays showing Compass Rose heading and actual heading (COG)
- Fast satellite acquisition time (TTFF)  
1 second from Hot Start
- Speed accuracy of +/- 1 MPH
- Heading accuracy of +/- 1 degree
- Digital stepper motor driven pointers
- Perfect for slow moving vessels where pitot tubes just don't work
- Ideal replacement for speed sensing devices (pitot tube and paddle wheel) that can fail over time

## Enclosures



### Deutsch connectorized harness

This premium style Speedometer is designed with the very latest technology. It is intended to fit directly into today's dash harnesses with easy Plug and Play connectors. Premium LED lighting and an optional diffused LCD display.

### Studded harness

The studded Speedometer offers an easy way to add GPS technology to your dash. Designed to fit into existing dash harnesses already installed. The Studded Speedometer connects directly to the battery and ground without the addition of a costly connector. Edge lit dials are easy to read in foul weather. Available in the more popular Faria Beede Classic styles.



# Depth Sounders



## Featured

### Depth Sounders

Factory #	Style	Transom	In-Hull	Thru-Hull
DS0101	Euro Black	F12850	F12851	
DS0114	Dress White	F13150	F13151	
DS0110	Ches. SS White	F13850	F13851	
DS0111	Ches. SS Black	F13750	F13751	F13795
DS0101	Professional Red	F12850	F12851	
DS0131	Kronos	F19150		
DS0176	Platinum	F22025		

### Dual Temperature Depth Sounders

Factory #	Style	Transom
DS1004	Ches. SS White	F13852
DS1002	Ches. SS Black	F13752

## Features & Benefits

- Depth range: 1- 61 meters (3 -199 feet)
- Deep and Shallow water alarms
- Programmable keel off-set
- Automatic gain control
- Back lighting for maximum night vision
- Metric or US standard units
- Easy to install!

Dual Temperature Depth Sounder can display outside air temperatures, bait well or external water temperatures from 0 °C to 100 °C (32 °F to 200 °F).

**Harnesses and connectors included.**

Fits a standard 2 1/16" (53 mm) gauge mounting hole.

## Accuracy at High Speeds

Our Engineers have incorporated the latest microprocessor technology and proprietary software designed to take advantage of today's high performance transducers. As a result this depth sounder outperforms all others on the market in its high speed capabilities and accuracy when faced with various bottom conditions.

The Depth Sounders from Faria offer a 3-199 foot (1-61meters) depth capability, with an automatic gain control, backlighting for maximum night vision, keel offset, and deep and shallow water alarms.

Depth can be read in meters, and feet. With its oversized back-lit display depth can be easily read in any condition. Audible and Visual alarms let the boater know when a shallow or deep water condition exists. A programmable keel offset lets you adjust the offset from the keel at the display.

## Transducers

The Depth Sounder is available with either a Transom, In-Hull or Thru Hull mounted transducer.

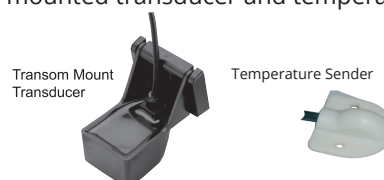


## Dual Temperature Depth Sounder

The dual display of the Dual Temperature Depth Sounder can also show temperature of the water, bait well or the ambient air temperature all from one 2" gauge.

## Senders and Transducers

The Dual Temperature Depth Sounder comes with a Transom mounted transducer and temperature sender.





## 5-Inch Gauges and Multifunction Indicators

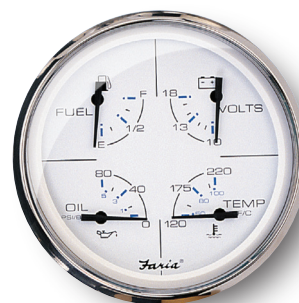
Dashboards are getting more and more crowded as today's technology explodes on to our boats. Often there are so many beeps and buzzes it's hard to see just what's happening. Of course, you can fill up your dash with lots of little two inch discrete gauges but that too takes more space. That's why Faria Beede developed our multi-function gauge.

We've combined the most useful discrete gauges into a single instrument and then styled them to match many of our standard styles.

Let us be your solution for dash overload.

Catalog#	Factory #	Size	Style	Description
F33761	SGP501	5	Ches. Black SS	Speedometer (60 MPH) (GPS) (Studded)
F33763	TCH323	5	Ches. Black SS	Tachometer with Hourmeter (6000 RPM) (Gas)
F33762	GF4005	5	Ches. Black SS	Multifunction [Fuel, Oil PSI, Water Temp., Voltmeter]

Catalog#	Factory #	Size	Style	Description
F33861	SGP502	5	Ches. White SS	Speedometer (60 MPH) (GPS) (Studded)
F33863	TC9381	5	Ches. White SS	Tachometer with Hourmeter (6000 RPM) (Gas)
F33864	GF4004	5	Ches. White SS	Multifunction [Fuel, Oil PSI, Water Temp., Voltmeter]



## A Tachometer to fit every need



*Tachometer with Digital Hourmeter*



*SystemCheck Tachometer*



*Suzuki Monitor Tachometer*

### Universal Gas and Diesel

These tachometers are available for all ignition systems, alternators and diesel engines. Available with or without a digital hourmeter which records up to 999999.9 hours.

### SystemCheck Tachometer

Warning lights for No Oil, Engine Overheat, Check Engine and Low Oil.

### Suzuki Monitor Tachometer

Warning lights for Check Engine, Temperature, Oil Level and Rev Limit.

4 and 5 inch sizes with multiple ranges;

- 6000 RPM for Inboard and I/O engines
- 7000 RPM for all Outboard engines
- 4000 RPM for diesel engines



Made in the USA





## Chesapeake Black Stainless Steel

Perimeter-lighted black dial with stylish blue and white graphics, polished stainless steel bezel, contoured white pointer, and domed glass lens.

Catalog	Factory	Size	Description
KTF003	KTF003		<b>Boxed Set</b> - Inboard - Speedo (60 MPH) (Mech)   Tach (6000 RPM)   Fuel Level   Voltmeter (10-16 VDC)   Water Temp (100-250 F)   Oil PSI (80 PSI)
KTF064	KTF064		<b>Boxed Set</b> - Inboard - Speedo (60 MPH) (GPS)   Tach (6000 RPM)   Fuel Level   Voltmeter (10-16 VDC)   Water Temp (100-250 F)   Oil PSI (80 PSI)
KTF004	KTF004		<b>Boxed Set</b> - Outboard - Speedo (60 MPH) (Mech)   Tach (7000 RPM)   Fuel Level   Voltmeter (10-16 VDC)

### Depth Sounders

F13752	DS1002	2	Depth Sounder with Air and Water Temperature (Transom Mounted Transducer)
F13750	DS0111	2	Depth Sounder (Transom Mounted Transducer)
F13751	DS0111	2	Depth Sounder (In-Hull Mounted Transducer)
F13795	DS0111	2	Depth Sounder (Thru-Hull Transducer) (Requires 1 5/8" hole in vessel.)

### Tachometers

F33710	TC9785	4	Tachometer (6000 RPM) (Gas) (Inboard & I/O)
F33718	TC9035	4	Tachometer (7000 RPM) (All outboard)
F33742	TD9127	4	Tachometer (4000 RPM) (Diesel) (Mechanical takeoff & var ratio alt)
F33763	TCH323	5	Tachometer with Hourmeter (6000 RPM) (Gas) (Inboard)
F33732	TC9127	4	Tachometer with Hourmeter (6000 RPM) (Gas) (Inboard)
F33750	TC9884	4	Tachometer (7000 RPM) with SystemCheck Indicator (Gas) (J/E Outboard)

### GPS Speedometers

F33761	SGP501	5	Speedometer (60 MPH) (GPS) (Studded)
F33730	SGP012	4	Speedometer (80 MPH) (GPS) (LCD)
F33726	SGP004	4	Speedometer (60 MPH) (GPS) (LCD)
F33749	SGP114	4	Speedometer (60 MPH) (GPS) (Studded)

### Speedometers

F33704	SE9509	4	Speedometer (60 MPH) (Pitot)
--------	--------	---	------------------------------

### Multi-Function Instruments

F33762	GF4005	5	Multifunction [Fuel Level   Oil PSI (80 PSI)   Water Temp (120-220 F)   Voltmeter (10-18 VDC)]
F33751	GF0007	4	Multifunction [Fuel Level   Oil PSI (80 PSI)   Water Temp (120-220 F)   Voltmeter (10-18 VDC)]

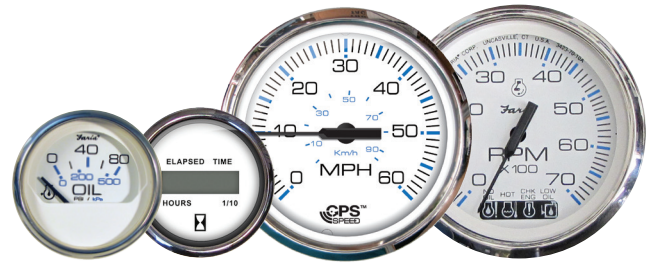
### Indicators

F13701	GP9368	2	Fuel Level Gauge (E-1/2-F)	F13709	GP9414	2	Trim Gauge (J/E/Suzuki Outboard)
F13721	GP9777	2	Fuel Level Gauge (Metric)	F13736	AP9530	2	Ammeter (60-0-60)
F13702	GP9640	2	Oil Pressure Gauge (80 PSI)	F13715	MH0239	2	Hourmeter [Digital] (12-32 volts)
F13712	OP1018	2	Water Pressure Gauge Kit (30 PSI)	F13725	GP7377	2	Rudder Angle Indicator
F13704	GP9142	2	Water Temperature Gauge (100-250 F)	F13705	VP9154	2	Voltsmeter (10-16 VDC)
F13707	GP9402	2	Trim Gauge (Mercury/Mariner/Mercuriser/Volvo DP/ Yamaha-2001 and newer)				



# Chesapeake White Stainless Steel

Perimeter-lighted white dial with stylish blue and black graphics, polished stainless steel bezel, contoured black pointer, and domed glass lens.



Catalog	Factory	Size	Description
KTF001	KTF001		<b>Boxed Set</b> - Inboard - Speedo (60 MPH) (Mech)   Tach (6000 RPM)   Fuel Level   Voltmeter (10-16 VDC)   Water Temp (100-250 F)   Oil PSI (80 PSI)
KTF063	KTF063		<b>Boxed Set</b> - Inboard - Speedo (60 MPH) (GPS)   Tach (6000 RPM)   Fuel Level   Voltmeter (10-16 VDC)   Water Temp (100-250 F)   Oil PSI (80 PSI)
KTF002	KTF002		<b>Boxed Set</b> - Outboard - Speedo (60 MPH) (Mech)   Tach (7000 RPM)   Fuel Level   Voltmeter (10-16 VDC)

## Depth Sounders

F13852	DS1004	2	Depth Sounder with Air and Water Temperature (Transom Mounted Transducer)
F13850	DS0110	2	Depth Sounder (Transom Mounted Transducer)
F13851	DS0110	2	Depth Sounder (In-Hull Mounted Transducer)

## Tachometers

F33807	TC9796	4	Tachometer (6000 RPM) (Gas) (Inboard & I/O)
F33817	TC9002	4	Tachometer (7000 RPM) (All outboard)
F33842	TD9128	4	Tachometer (4000 RPM) (Diesel) (Mechanical takeoff & var ratio alt)
F33818	TD9733	4	Tachometer (4000 RPM) (Diesel) (Mag Pick-Up)
F33863	TC9381	5	Tachometer with Hourmeter (6000 RPM) (Gas) (Inboard)
F33832	TC9128	4	Tachometer with Hourmeter (6000 RPM) (Gas) (Inboard)
F33840	TCH008	4	Tachometer w/ Hourmeter (7000 RPM) (Gas)(Outboard)
F33834	TD9108	4	Tachometer with Hourmeter (4000 RPM) (Diesel) (Mech takeoff & var ratio alt)
F33850	TC9881	4	Tachometer (7000 RPM) with SystemCheck Indicator (Gas) (J/E Outboard)

## GPS Speedometers

F33861	SGP502	5	Speedometer (60 MPH) (GPS) (Studded)
F33829	SGP010	4	Speedometer (80 MPH) (GPS)
F33826	SGP003	4	Speedometer (60 MPH) (GPS)
F33839	SGP113	4	Speedometer (60 MPH) (GPS) (Studded)

## Speedometers

F33811	SE9521	4	Speedometer (60 MPH) (Pitot)
F33819	SE9522	4	Speedometer (80 MPH) (Pitot)

## Multi-Function Instruments

F33801	SY9629	4	Synchronizer (Dual Engine) Gas and Variable Ratio / Alternator type diesels only.
F33864	GF4004	5	Multifunction [Fuel Level   Oil PSI (80 PSI)   Water Temp (120-220 F)   Voltmeter (10-18 VDC)]
F33851	GF0008	4	Multifunction [Fuel Level   Oil PSI (80 PSI)   Water Temp (120-220 F)   Voltmeter (10-18 VDC)]

## Indicators

F13801	GP9373	2	Fuel Level Gauge (E-1/2-F)	F13889	GP7440	2	Trim Gauge (Honda)
F13818	GP9791	2	Fuel Level Gauge (Metric)	F13807	GP9649	2	Trim Gauge (Mercury/Mariner/Mercruiser/Volvo DP/ Yamaha-2001 and newer)
F13802	GP9647	2	Oil Pressure Gauge (80 PSI)	F13809	GP9418	2	Trim Gauge (J/E/Suzuki Outboard)
F13812	OP1022	2	Water Pressure Gauge Kit (30 PSI)	F13808	GP9734	2	Trim Gauge (OMC Cobra (1993-1994) / Volvo SX (MD models only))
F13806	GP9454	2	Cylinder Head Temperature (60 - 220 F) with sender	F13822	GP7378	2	Rudder Angle Indicator
F13804	GP9146	2	Water Temperature Gauge (100-250 F)	F13815	MH0211	2	Hourmeter [Digital] (12-32 volts)
F13828	GP9178	2	Water Temperature Gauge (40-120 C) (Metric)	F13805	VP9158	2	Voltmeter (10-16 VDC)
F13891	CL1026	2	Clock (Quartz) (Analog)				



## Coral

Perimeter-lighted black dial with stylish white and blue graphics, black aluminum bezel with burnished leading edge, contoured white pointer, and flat glass lens.

Catalog	Factory	Size	Description					
Tachometers								
F33004	TC9493	4	Tachometer (6000 RPM) (Gas) (Inboard & I/O)					
F33005	TC9036	4	Tachometer (7000 RPM) (All outboard)					
Speedometers								
F33009	SE9216	4	Speedometer (55 MPH) (Pitot)					
Indicators								
F13001	GP9346	2	Fuel Level Gauge (E-1/2-F)		F13017	GP9348	2	Trim Gauge (Mercury/Mariner/Mercruiser/Volvo DP/Yamaha-2001 and newer)
F13020	GP9390	2	Fuel Level Gauge (Metric)					
F13002	GP9527	2	Oil Pressure Gauge (80 PSI)		F13016	GP9273	2	Trim Gauge (J/E/Suzuki Outboard)
F13003	OP1000	2	Water Pressure Gauge Kit (30 PSI)		F13013	MH0024	2	Hourmeter [Digital] (12-32 volts)
F13009	GP9405	2	Cylinder Head Temperature (60 - 220 F) with sender		F13010	VP9106	2	Voltmeter (10-16 VDC)
F13004	GP9461	2	Water Temperature Gauge (100-250 F)					



The choice of the world's leading boat manufacturers since 1957.

*All of our instruments are performance proven under the most demanding conditions. They are factory installed original equipment with major manufacturers worldwide. You can rely on Faria Beede Instruments, Inc. for world class quality, dependability and ease of installation.*

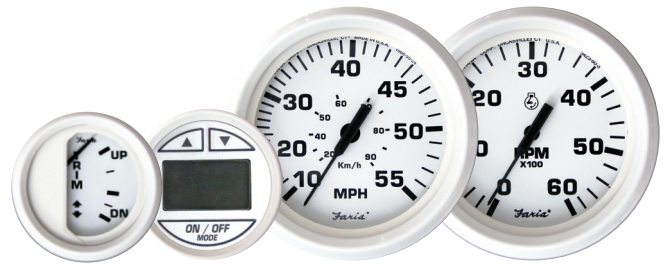
*Contact Faria Beede for OEM gauge replacements. Many of the OEM styles can still be purchased through our Marine distributors. Before you contact us, have a picture of the gauge and the part number readily available. This helps us to identify the gauge, so that we can better assist you.*





# Dress White

Perimeter-lighted white dial with bold black graphics, white aluminum bezel, contoured black pointer, and flat glass lens.



Catalog	Factory	Size	Description
KT9797	KT9797		<b>Boxed Set</b> - Inboard - Speedo (55 MPH) (Mech)   Tach (6000 RPM)   Fuel Level   Voltmeter (10-16 VDC)   Water Temp (100-250 F)   Oil PSI (80 PSI)
KT9794	KT9794		<b>Boxed Set</b> - Outboard - Speedo (55 MPH) (Mech)   Tach (7000 RPM)   Fuel Level   Voltmeter (10-16 VDC)

## Depth Sounders

F13150	DS0114	2	Depth Sounder (Transom Mounted Transducer)
F13151	DS0114	2	Depth Sounder (In-Hull Mounted Transducer)

## Tachometers

F33103	TC9691	4	Tachometer (6000 RPM) (Gas) (Inboard & I/O)
F33104	TC9038	4	Tachometer (7000 RPM) (All outboard)
F33132	TC9124	4	Tachometer with Hourmeter (6000 RPM) (Gas) (Inboard)
F33140	TCH013	4	Tachometer with Hourmeter (7000 RPM) (Gas) (Outboard)
F33150	TC9887	4	Tachometer (7000 RPM) with SystemCheck Indicator (Gas) (J/E Outboard)

## GPS Speedometers

F33147	SGP111	4	Speedometer (60 MPH) (GPS) (Studded)
--------	--------	---	--------------------------------------

## Speedometers

F33112	SE9475	4	Speedometer (55 MPH) (Pitot)
F33113	SE9476	4	Speedometer (80 MPH) (Pitot)

## Multi-Function Instruments

F33105	SY9618	4	Synchronizer (Dual Engine) Gas and Variable Ratio / Alternator type diesels only.
--------	--------	---	---

## Indicators

F13101	GP9389	2	Fuel Level Gauge (E-1/2-F)	F13122	GP9712	2	Trim Gauge (Mercury/Mariner/Mercruiser/Volvo DP/Yamaha-2001 and newer)
F13117	GP9722	2	Fuel Level Gauge (Metric)	F13123	GP9711	2	Trim Gauge (J/E/Suzuki Outboard)
F13102	GP9573	2	Oil Pressure Gauge (80 PSI)	F13130	MH0240	2	Hourmeter [Digital] (12-32 volts)
F13108	OP1006	2	Water Pressure Gauge Kit (30 PSI)	F13120	VP9139	2	Voltmeter (10-16 VDC)
F13113	GP9444	2	Cylinder Head Temperature (60 - 220 F) with sender				
F13110	GP9120	2	Water Temperature Gauge (100-250 F)				



## Euro

Perimeter-lighted black dial with bold white graphics, black aluminum bezel, contoured white pointer, and flat glass lens.

Catalog	Factory	Size	Description
KT9799	KT9799		<b>Boxed Set</b> - Inboard - Speedo (55 MPH) (Mech)   Tach (6000 RPM)   Fuel Level   Voltmeter (10-16 VDC)   Water Temp (100-250 F)   Oil PSI (80 PSI)
KT9796	KT9796		<b>Boxed Set</b> - Outboard - Speedo (55 MPH) (Mech)   Tach (7000 RPM)   Fuel Level   Voltmeter (10-16 VDC)

### Depth Sounders

F12850	DS0101	2	Depth Sounder (Transom Mounted Transducer)
F12851	DS0101	2	Depth Sounder (In-Hull Mounted Transducer)

### Tachometers

F32804	TC9643	4	Tachometer (6000 RPM) (Gas) (Inboard & I/O)
F32805	TC9011	4	Tachometer (7000 RPM) (All outboard)
F32842	TD9122	4	Tachometer (4000 RPM) (Diesel) (Mechanical takeoff & var ratio alt)
F32803	TD9671	4	Tachometer (4000 RPM) (Diesel) (Mag Pick-Up)
F32832	TC9122	4	Tachometer with Hourmeter (6000 RPM) (Gas) (Inboard)
F32840	TCH015	4	Tachometer with Hourmeter (7000 RPM) (Gas) (Outboard)
F32834	TD9102	4	Tachometer with Hourmeter (4000 RPM) (Diesel) (Mech takeoff & var ratio alt)
F32850	TC9951	4	Tachometer (7000 RPM) with SystemCheck Indicator (Gas) (J/E Outboard)

### Speedometers

F32810	SE9463	4	Speedometer (55 MPH) (Mechanical)
F32812	SE9460	4	Speedometer (80 MPH) (Mechanical)

### GPS Speedometers

F32816	SGP110	4	Speedometer (60 MPH) (GPS) (Studded)
--------	--------	---	--------------------------------------

### Multi-Function Instruments

F32851	GF0001	4	Multifunction [Fuel Level   Oil PSI (80 PSI)   Water Temp (100-250 F)   Voltmeter (10-16 VDC)]
--------	--------	---	--

### Indicators

F12801	GP9357	2	Fuel Level Gauge (E-1/2-F)	F12814	GP9124	2	Water Temperature Gauge (40-120 C) (Metric)
F12802	GP9322	2	Fuel Level Gauge (Metric)	F12828	GP9374	2	Trim Gauge (Mercury/Mariner/Mercruiser/Volvo DP/ Yamaha-2001 and newer)
F12830	GP9324	2	Tank Level Gauge (Potable water)	F12827	GP9305	2	Trim Gauge (J/E/Suzuki Outboard)
F12831	GP9326	2	Tank Level Gauge (Potable water) (Metric)	F12822	AP9523	2	Ammeter (60-0-60)
F12803	GP9599	2	Oil Pressure Gauge (80 PSI)	F12823	VP7901	2	Battery Condition Indicator (12 VDC)
F12845	GP9597	2	Oil Pressure Gauge (100 PSI)	F12825	CL1008	2	Clock (Quartz) (Analog)
F12805	GP9511	2	Oil Pressure Gauge (5 BAR) (Metric)	F12835	MH0232	2	Hourmeter [Digital] (12-32 volts)
F12810	OP1004	2	Water Pressure Gauge Kit (30 PSI)	F12833	GP7373	2	Rudder Angle Indicator
F12875	OP1014	2	Water Pressure Gauge Kit (60 PSI)	F12821	VP9134	2	Voltmeter (10-16 VDC)
F12819	GP9438	2	Cylinder Head Temperature (60 - 220 F) with sender	F12860	VP9191	2	Voltmeter (20-32 VDC)
F12812	GP9118	2	Water Temperature Gauge (100-250 F)				

### Blank Gauges

F32861	TC9640	4	Blank gauge fill
F12861	AP9475	2	Blank gauge fill



# Euro White

Perimeter-lighted white dial with bold black graphics, black aluminum bezel, contoured white pointer, and flat glass lens.



Catalog	Factory	Size	Description
KT9798	KT9798		<b>Boxed Set</b> - Inboard - Speedo (55 MPH) (Mech)   Tach (6000 RPM)   Fuel Level   Voltmeter (10-16 VDC)   Water Temp (100-250 F)   Oil PSI (80 PSI)
KT9795	KT9795		<b>Boxed Set</b> - Outboard - Speedo (55 MPH) (Mech)   Tach (7000 RPM)   Fuel Level   Voltmeter (10-16 VDC)

## Tachometers

F32904	TC9679	4	Tachometer (6000 RPM) (Gas) (Inboard & I/O)
F32905	TC9003	4	Tachometer (7000 RPM) (All outboard)
F32942	TD9123	4	Tachometer (4000 RPM) (Diesel) (Mechanical takeoff & var ratio alt)
F32950	TC9886	4	Tachometer (7000 RPM) with SystemCheck Indicator (Gas) (I/E Outboard)

## Speedometers

F32909	SE9473	4	Speedometer (55 MPH) (Pitot)
--------	--------	---	------------------------------

## Indicators

F12901	GP9358	2	Fuel Level Gauge (E-1/2-F)	F12916	GP9709	2	Trim Gauge (Mercury/Mariner/Mercruiser/Volvo DP/ Yamaha-2001 and newer)
F12902	GP9596	2	Oil Pressure Gauge (80 PSI)	F12915	GP9708	2	Trim Gauge (I/E/Suzuki Outboard)
F12903	OP1005	2	Water Pressure Gauge Kit (30 PSI)	F12913	MH0243	2	Hourmeter [Digital] (12-32 volts)
F12910	GP9439	2	Cylinder Head Temperature (60 - 220 F) with sender	F12911	VP9136	2	Voltmeter (10-16 VDC)
F12904	GP9119	2	Water Temperature Gauge (100-250 F)				



Kronos style pictured. (page 13)



## Kronos

Polished Stainless Steel Bezel, Flat Glass Lens, Perimeter Lighted Spun Aluminum dial with Gold and Black graphics. Gold increments and Logo on dial are Embossed. All instruments include two piece Newport Pointer with White Hub.

Catalog	Factory	Size	Description
KTF024	KTF024		<b>Boxed Set</b> - Inboard - Speedo - 60 MPH) (Mech)   Tach (6000 RPM)   Fuel Level   Voltmeter (10-16 VDC)   Water Temp (100-250 F)   Oil PSI (80 PSI)

### Depth Sounders

F19150	DS0131	2	Depth Sounder (In-Hull Mounted Transducer)
--------	--------	---	--

### Tachometers

F39004	TC9983	4	Tachometer (6000 RPM) (Gas) (Inboard & I/O)
F39005	TC9252	4	Tachometer (7000 RPM) (All outboard)
F39040	TCH305	4	Tachometer with Hourmeter (7000 RPM) (Gas) (Outboard)

### Speedometers

F39009	SE9945	4	Speedometer (60 MPH) (Pitot)
--------	--------	---	------------------------------

### Indicators

F19001	GP7683	2	Fuel Level Gauge (E-1/2-F)	F19005	GP7681	2	Trim Gauge (Mercury/Mariner/Mercruiser/Volvo DP/ Yamaha-2001 and newer)
F19002	GP7684	2	Oil Pressure Gauge (80 PSI)	F19020	MH0144	2	Hourmeter (10,000 hrs) (12-32 VDC)
F19007	OP1171	2	Water Pressure Gauge Kit (30 PSI)	F19004	VP7102	2	Voltmeter (10-16 VDC)
F19003	GP7682	2	Water Temperature Gauge (100-250 F)				

## Professional Red

Perimeter-lighted black dial with stylish red and white graphics, black aluminum bezel, tear-drop white pointer, and flat glass lens.



Catalog	Factory	Size	Description
<b>Depth Sounders</b>			
F12850	DS0101	2	Depth Sounder (Transom Mounted Transducer)
F12851	DS0101	2	Depth Sounder (In-Hull Mounted Transducer)

### Tachometers

F34607	TC9933	4	Tachometer (6000 RPM) (Gas) (Inboard & I/O)
F34617	TC9026	4	Tachometer (7000 RPM) (All outboard)
F34650	TC9934	4	Tachometer (7000 RPM) with SystemCheck Indicator (Gas) (I/E Outboard)

### Speedometer

F34611	SE9777	4	Speedometer (60 mph) (Pitot)
--------	--------	---	------------------------------

### Indicators

F14601	GP7282	2	Fuel Level Gauge (E-1/2-F)	F14607	GP7422	2	Trim Gauge (Mercury/Mariner/Mercruiser/Volvo DP/ Yamaha-2001 and newer)
F14602	GP7063	2	Oil Pressure Gauge (80 PSI)	F14613	MH0232	2	Hourmeter [Digital] (12-32 volts)
F14612	OP1057	2	Water Pressure Gauge Kit (30 PSI)	F14605	VP7042	2	Voltmeter (10-16 VDC)
F14604	GP7166	2	Water Temperature Gauge (100-250 F)				



**Made in the USA**





## Platinum

Polished Stainless Steel Bezel, Domed Fog Resistant Glass Lens, Perimeter Lighted Spun Aluminum dial with White and Black graphics. LED back lighted pointer with orange tip.

Catalog	Factory	Size	Description					
KTF0186	KTF0186		<b>Boxed Set</b> - Inboard - Speedo (70 MPH) (Mech)   Tach (7000 RPM)   Fuel Level  Voltmeter (10-16 VDC)   Water Temp (100-250 F)   Oil PSI (80 PSI)					
KTF0185	KTF0185		<b>Boxed Set</b> - Outboard - Speedo (70 MPH) (Mech)   Tach (7000 RPM)   Fuel Level  Voltmeter (10-16 VDC)					
<b>Depth Sounders</b>								
F22025	DS0176	2	Depth Sounder (In-Hull Mounted Transducer)					
<b>Tachometers</b>								
F22009	TC8511	4	Tachometer (7000 RPM) (Gas) (Inboard, Outboards & I/O)					
<b>Speedometers</b>								
F22010	SGP128	4	Speedometer (60 MPH) (GPS) (Studded)					
F22012	SE9864	4	Speedometer (50 MPH) (Pitot)					
F22011	SE9863	4	Speedometer (70 MPH) (Pitot)					
<b>Multi-Function Instruments</b>								
F22014	GF0417	4	Multifunction [Fuel Level   Oil PSI (80 PSI)   Water Temp (120-220 F)   Voltmeter (10-18 VDC)]					
F22015	GS0075	4	Multifunction [Speedometer (65 MPH) (Pitot)   Fuel Level]					
F22016	GT0104	4	Multifunction [Tachometer (7000 RPM)   Voltmeter (10-16 VDC)]					
F22013	GF0275	4	Multifunction [Fuel Level   Voltmeter (10-16 VDC)]					
<b>Indicators</b>								
F22021	GP5088	2	Fuel Level Gauge (E-1/2-F)		F22019	GP5086	2	Trim Gauge (Mercury/Mariner/Mercruiser/Volvo DP/ Yamaha-2001 and newer)
F22024	GP5089	2	Oil Pressure Gauge (80 PSI)					
F22023	OP1177	2	Water Pressure Gauge Kit (30 PSI)		F22018	GP5085	2	Trim Gauge (Honda)
F22017	GP5084	2	Water Temperature Gauge (100-250 F)		F22020	GP5087	2	Trim Gauge (J/E/Suzuki Outboard)
F13715	MH239	2	Hourmeter [Digital] (12-32 volts)		F22022	VP7179	2	Voltmeter (10-16 VDC)

## Spun Silver

Perimeter-lighted silver dial with bold black graphics, polished stainless steel bezel, contoured black pointer, and domed glass lens.



Catalog	Factory	Size	Description				
KTF0184	KTF0184		<b>Boxed Set</b> - Inboard - Speedo (65 MPH) (Mech)   Tach (7000 RPM)   Fuel Level   Voltmeter (10-16 VDC)   Water Temp (100-250 F)   Oil PSI (80 PSI)				
Tachometers							
F36004	TC9476	4	Tachometer (6000 RPM) (Gas) (Inboard & I/O)				
F36005	TC9004	4	Tachometer (7000 RPM) (All outboard)				
F36032	TC9196	4	Tachometer with Hourmeter (6000 RPM) (Gas) (Inboard)				
Speedometer							
F36010	SE9910	4	Speedometer (65 MPH) (Pitot)				
Indicators							
F16001	GP9932	2	Fuel Level Gauge (E-1/2-F)	F16016	GP9223	2	Trim Gauge (Mercury/Mariner/Mercruiser/ Volvo DP/ Yamaha-2001 and newer)
F16004	GP9428	2	Water Temperature Gauge (100-250 F)				
F16002	GP9423	2	Oil Pressure Gauge (80 PSI)	F16023	VP9223	2	Voltmeter (10-16 VDC)
F16020	MH0114	2	Hourmeter (10,000 hrs) (12-32 VDC)				



*Repair costs can get expensive.*

## **Restore • Replace • Rebuild • Repower**

*with Boxed Sets from Faria Beede. A cost effective OEM gauge replacement option.*



Boxed Sets offer a complete set of instruments and everything you need to replace your old OEM installed instruments.

With many styles to choose from, Faria Beede has the look you want and savings that is easy on the budget.

When upgrading your engine don't forget about your instruments.

Faria Beede has an easy plug and play instrument replacement set that works with your new engine.

### ***Faria Beede Limited Warranty***

During the initial warranty period of 36 months from date of original retail purchase (12 months on Depth Sounder, MG1000 and MG3000 and 24 months on Senders, Transducers, Tri-ducers and Smartducers), any instrument(s) that fails due to defects in materials or workmanship will be repaired or replaced at Faria Beede Instruments' at no charge.

Once beyond the initial warranty period repair fees apply.

For more information go to  
***warranty.fariabeede.com***



# Transducers, Pitots

***Combined with our Depth Sounders and other electronic instrumentation these transducers and senders offer a wide range of options to fit your needs.***



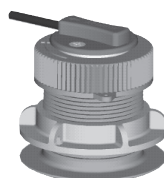
**SN2010**  
**Adjustable In-hull Transducer**

This in-hull transducer has a patented adjustable feature which ensures that sound waves are transmitted vertically to the bottom on almost any hull with a dead rise up to 22°. With no hull penetration, installation is easy and high speed performance is maximized.



**SN2011**  
**Transom Mounted Depth Transducer**

With a low profile this depth unit offers little drag and easy installation for dead rise angles up to 30°. Designed with a release bracket to protect against impact damage. This unit provides good high speed operations up to 55 knots.



**SN0015**  
**Thru-hull Flush Mounted Temperature and Speed Sender**

Perfect for water sports which require continuous accurate speed measurements like water-skiing, where boat angles can sometimes interrupt transom mounted senders. The thru-hull flush mounted temperature and speed sender offer virtually no drag. Easy installation and accuracy makes this sender the perfect choice for water sports. (Requires 1 5/8" hole in vessel.)



**SN2031**  
**Retractable Tri-ducer Thru-Hull Transducer**  
Depth / Paddle Wheel Speed / Temperature Sensor  
1 5/8" thru hull depth transducer.  
(Requires 1 5/8" hole in vessel.)



**SN2060A**  
**Thru-hull Transducer**  
1 5/8" thru hull depth transducer.  
(Requires 1 5/8" hole in vessel.)



**Pitot Tubes Assembly Kits**  
Complete transom mount speedometer pick-up with escutcheon plate and mounting hardware (two choices of tubing length) for use with all marine speedometers.

Catalog	Factory	Description
F91109	KS9007	PITOT KIT (Universal)
F91106	KS9003	PITOT KIT (Universal) (20 ft. tubing)
F91105	CG0001	PITOT KIT (Escutcheon cover plate for pitot tubing)

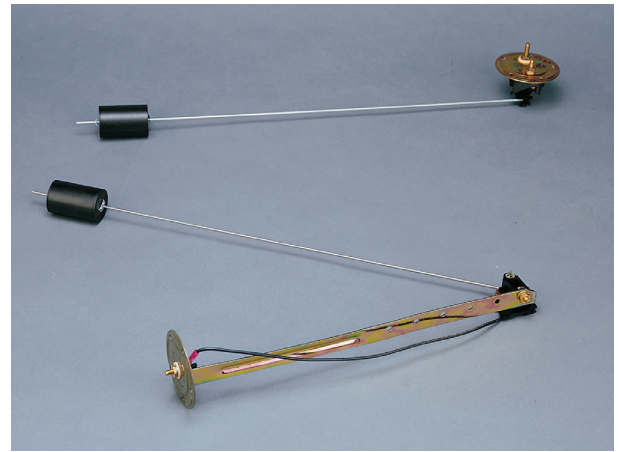
# Accessories - Senders

## Fuel Level Senders

SAE 5 hole flange, adjustable for left or right arm movements and various tank depths. Includes gasket and screws and 2 #10 stud terminals.

Sealing gasket and mounting hardware required.

Catalog	Factory	Description
F91001	LS6025	SENDER (Fuel Level) (American 8-16 inch) (Single)
F91003	LS6026	SENDER (Fuel Level) (American 14-24 inch) (Single)
F91005	LS6028	SENDER (Fuel Level) (European 20-40 cm) (Single)



(For Tanks 6 to 25" deep)

## Temperature Senders

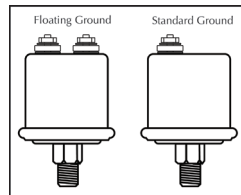
- 1/8" NPTF
- A wide variety of sender types
- Metric and Standard values available

Catalog	Factory	Description
F90401	TS1029	SENDER (Temperature) (1/8) (American Single Standard)
F90402	TS2035	SENDER (Temperature) (1/4) (American Single Standard)
F90403	TS3044	SENDER (Temperature) (3/8) (American Single Standard)
F90404	TS4042	SENDER (Temperature) (1/2) (American Single Standard)
F90406	TS1056	SENDER (Temperature) (1/8) (American Dual Standard)
F90412	TS1058	SENDER (Temperature) (1/8) (European Single Standard)
F90405	TS5026	SENDER (Cylinder Head Temperature)

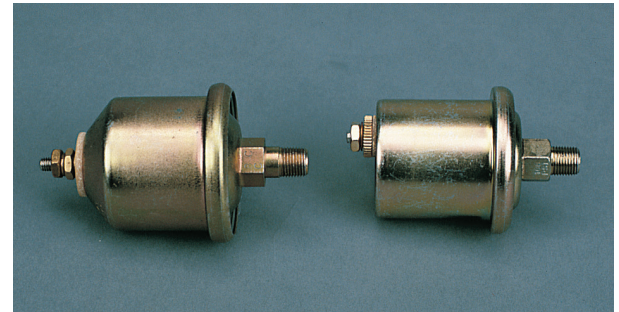


## Pressure Senders

- 1/8" NPTF
- A wide variety of sender types
- Metric and Standard values available



Catalog	Factory	Description
F90512	SD0003	SENDER (Oil Pressure) (1/8 NPTF American 80 PSI) (Single Standard)
F90511	SD0025	SENDER (Oil Pressure) (1/8 NPTF American 80 PSI) (Dual Standard)
F90516	SD0031	SENDER (Oil Pressure) (1/8 NPTF European 5 BAR) (Single Float)
F90519	SD0006	SENDER (Oil Pressure) (1/8 NPTF American 100 PSI) (Single Standard)
F90526	SD0035	SENDER (Oil Pressure) (1/8 NPTF European 10 BAR) (Single Standard)

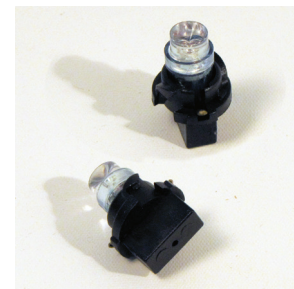


## Other Senders

Catalog	Factory	Description
F90530	SD0041	SENDER (Rudder Angle) (Single station) (Standard or Floating ground)
F90901	DK9005	SENDER (Tachometer) (Diesel) (Mechanical takeoff)

## Lighting Replacements

KTF053	LM0067	LIGHTING [ LED ] (Bulb replacement pack (BLUE) (4 inch gauges) (2 pack)
KTF052	LM0078	LIGHTING [ LED ] (Bulb replacement pack (BLUE) (2 inch gauges) (2 pack)





# Specifications

*Our instruments are manufactured by Faria Beede Instruments., Inc. in Connecticut and Indiana, USA. We are an ISO:9001-2015 registered company. Our instruments and senders are built to stringent standards and have passed a comprehensive quality control procedure prior to shipment. Each instrument is backed by the Faria Beede Limited Warranty.*

## 4" & 5" Electronic Instruments

Operating Temperature	-4 °F to +158° F (-20° C to +70° C)
Storage Temperature	-22° F to +185° F (-30° C to +85° C)
Lighting	See product line for specific information
Operating Voltage	11.5 to 16 volts
Nominal Voltage	14.2 volts
Current Consumption	< 100 mA, without illumination
Bezel	Stainless Steel or Aluminum - see product line for specific information
Lens	Glass or Poly carbonate - see product line for specific information
Connection	Studs, blade terminals, connectors - see product line for specific information
Mounting Bracket	Plastic mounting clamp. Clamping range 0 -.8" (0-20 mm)
Torque	5 to 7 inch pounds (.57 - .80 Nm)
Mounting Hole	3 3/8" (85 mm) for 4" Instrument – 4 3/8" (112 mm) for 5" Instrument

## 4" & 5" Mechanical Instruments

Operating Temperature	-22° F to +185° F (-30° C to +85° C)
Storage Temperature	-40° F to +221° F (-40° C to +105° C)
Lighting	See product line for specific information
Bezel	Stainless Steel or Aluminum - see product line for specific information
Lens	Glass or Poly carbonate - see product line for specific information
Connection	Studs, blade terminals - see product line for specific information
Mounting Bracket	Plastic mounting clamp. Clamping range 0 -.8" (0-20 mm)
Torque	5 to 7 inch pounds (.57 - .80 Nm)
Mounting Hole	3 3/8" (85 mm) for 4" Instrument – 4 3/8" (112 mm) for 5" Instrument

## 2" Electronic Instruments

Operating Temperature	-4 °F to +158°F (-20° C to +70° C)
Storage Temperature	-22° F to +185°F (-30° C to +85° C)
Lighting	See product line for specific information
Operating Voltage	11.5 to 16 volts
Nominal Voltage	14.2 volts
Current Consumption	< 100 mA, without illumination
Bezel	Stainless Steel or Aluminum - see product line for specific information
Lens	Glass or Poly carbonate - see product line for specific information
Connection	Studs, blade terminals, connectors - see product line for specific information
Mounting Bracket	Plastic mounting clamp. Clamping range 0 -.8" (0-20 mm)
Torque	5 to 7 inch pounds (.57 - .80 Nm)
Mounting Hole	2 1/16" (53 mm) for 2" Instrument

## 2" Mechanical Instruments

Operating Temperature	-22 °F to +185°F (-30° C to +85° C)
Storage Temperature	-40 °F to +221°F (-40° C to +105° C)
Lighting	See product line for specific information
Bezel	Stainless Steel or Aluminum - see product line for specific information
Lens	Glass or Poly carbonate - see product line for specific information
Connection	Studs, blade terminals - see product line for specific information
Mounting Bracket	Plastic clamp, metal on water pressure. Clamping range 0 -.8" (0-20 mm)
Torque	5 to 7 inch pounds (.57 - .80 Nm)
Mounting Hole	2 1/16" (53 mm) for 2" Instrument



Made in the USA

Manufactured by Faria Beede Instruments, Inc, North Stonington CT, USA • Copyright and all other rights reserved.  
Our products are continually being improved. Specifications may change without notice.



**Faria Beede Instruments, Inc.**

North Stonington, CT 06359

860.848.9271

Fax: 860.848.2704

fm-002-0001 rev O 200102