



# Aftermarket Catalog - 2017





ENGINEERED *Excellence*™  
An ISO 9001-2008 Registered Company



## Rugged • Reliable • Innovative

Faria Beede Instruments, Inc. has been manufacturing gauges and instruments in Uncasville, CT for more than 50 years. The company offers a full compliment of analog and digital engine monitoring and telematic solutions for a wide range of global marine, military, industrial and performance industries.

One of the few remaining vertically integrated U.S. manufacturers of SAE J1939 and NMEA 2000 instrumentation, Faria Beede provides some of the best turnaround times and responsive support in the industry. This is only possible by having total control of all aspects of design, engineering and manufacturing.

Whether your needs are for the simplest or the more advanced computerized engines, Faria Beede has the instrumentation solution that is right for you.



Instruments for  
**Automotive**  
**Commercial**  
**Industrial**  
**Marine**  
**Military**  
**Performance**  
**Recreational**

[www.FariaBeede.com](http://www.FariaBeede.com)



Made in the USA



## Featured



EntelNet Wi-Fi Module  
(page 3)



GPS Speedometer  
(page 4)



Boxed Sets  
(page 5-6)

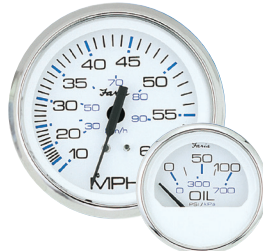


Depth Sounders  
(page 7)

## Classic Styling



Chesapeake Black SS  
(page 9)



Chesapeake White SS  
(page 10)



Coral  
(page 11)



Dress White  
(page 12)



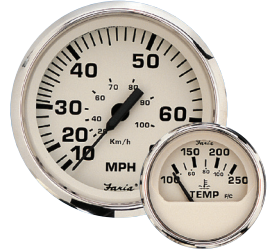
Essex Contour  
(page 12)



Euro  
(page 13)



Euro White  
(page 14)



Euro Beige SS  
(page 15)



Kronos  
(page 15)



Heavy Duty - Black  
(page 16)



Heavy Duty - Silver  
(page 16)



Platinum  
(page 17)



Professional Red  
(page 17)



Spun Silver  
(page 18)



Digital Black Fade  
(page 19)



GPS Antenna  
(page 20)

## Accessories

Transducers and Senders (page 20)  
Accessories (page 21)  
Specifications (page 22)



# EntelNet

## Wi-Fi Remote Engine Monitoring

### Engine Monitoring and Alert Communications System.

The EntelNet™ service is a multi part system which combines the information received from the engine ECU (via CAN Bus), Analog (resistance, voltage, etc.) or Serial data (RS-232 for NMEA 0183, typical for GPS) and an over the air communications system, like Wi-Fi, to provide remote control and monitoring of on-board systems.

When an engine is malfunctioning the ECU transmits the area of the malfunction as a fault code.

The fault code is often used to turn on a lamp or an alert indicator. The EntelNet™ system records these fault codes and can send the data, using your e-mail application to the technician giving them a heads up of possible problems or a means to diagnose the engine's health remotely.

#### NMEA2000 Wi-Fi module (WD100)

(Not currently available for sale outside of North America.)

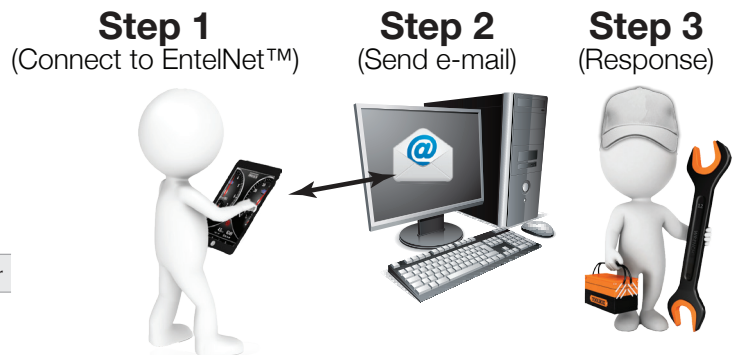
Catalog#    Factory #    Description

KTF068    KTF068    NMEA2000 EntelNet™ module with NMEA2000 connector



The data (GPS speed, Map position, Instrument data and CAN error codes) is displayed in an easy to read website and can be viewed by an internet capable Android® device i.e. Smart Phone, Tablet. (iOS version coming soon.)

The engine information can then be sent to a repair facility, via e-mail, giving your repair technician a heads up that you're having problems.



Connected directly to the CAN Bus, Real-Time data is sent by the EntelNet™ wireless module (Wi-Fi™).

### Get the technicians involved.

- No additional costs
- Send the engine and other critical data anywhere in the world to be diagnosed\*\*
- Helps reduce warranty costs and can help lessen repair time

\* Built for an NMEA2000 engine

\*\* Requires an Android® device connected to the internet.



# GPS Speedometer

The GPS Speedometer is a drop-in replacement for your current speedometer.

The GPS **antenna is built-in** to the instruments and does not require an external antenna. **No additional hardware is required.**

The Faria Beede GPS Speedometer uses a highly accurate 48 channel GPS receiver. You can be sure that the GPS Speedometer is giving you the most accurate GPS information available on the market today.

Speed data is shown by an analog pointer. This pointer is driven by a digital stepper motor for increased accuracy and minimized pointer bounce.



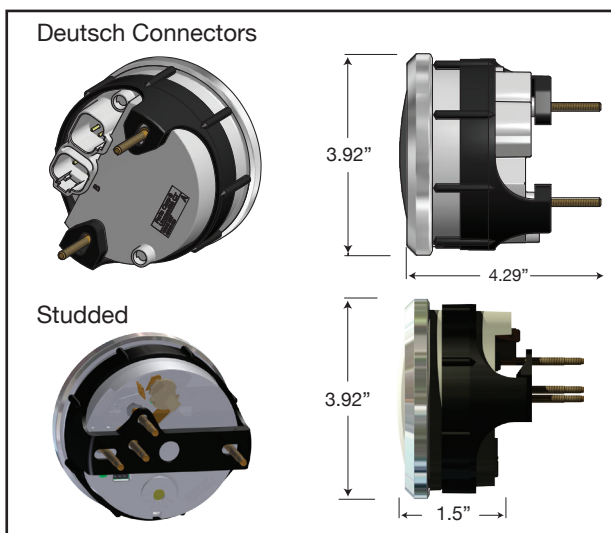
## GPS Speedometers

Catalog#	Factory #	Style	Range	Display	Case
33710	SGP012	Ches. Black SS	80 MPH	LCD	
33726	SGP004	Ches. Black SS	60 MPH	LCD	
33749	SGP114	Ches. Black SS	60 MPH		Studded
33728	SGP006	Ches. Black SS	50 KNOT	LCD	
33829	SGP010	Ches. White SS	80 MPH	LCD	
33826	SGP003	Ches. White SS	60 MPH	LCD	
33839	SGP113	Ches. White SS	60 MPH		Studded
33827	SGP005	Ches. White SS	50 KNOT	LCD	
33147	SGP111	Dress White	60 MPH		Studded
32816	SGP110	Euro Black	60 MPH		Studded



**Antenna built in.**  
No additional parts needed.

## Enclosures



## Features & Benefits

- Available in multiple speed ranges in MPH, KPH, and KNOTs
- Premium LED back-lit.
- Available with and without LCD displays showing Compass Rose heading and actual heading (COG)
- Fast satellite acquisition time (TTFF)  
1 second from Hot Start
- Speed accuracy of +/- 1 MPH
- Heading accuracy of +/- 1 degree
- Digital stepper motor driven pointers
- Perfect for slow moving vessels where pitot tubes just don't work
- Ideal replacement for speed sensing devices (pitot tube and paddle wheel) that can fail over time

### Deutsch connectorized harness

This premium style Speedometer is designed with the very latest technology. It is intended to fit directly into today's dash harnesses with easy Plug and Play connectors. Premium LED lighting and an optional diffused LCD display.

### Studded harness

The studded Speedometer offers an easy way to add GPS technologies to your dash. Designed to fit into existing dash harnesses all ready installed. The Studded Speedometer connects directly to the battery and ground without the addition of a costly connector. Edge lit dials are easy to read in foul weather. Available in the more popular Faria Beede Classic styles.





Packaged and ready for the display counter. These Boxed Sets offer a complete set of gauges ready to install.

Available in Chesapeake White Stainless Steel, Chesapeake Black Stainless Steel, Essex Contour, Euro, Euro White, Dress White and Kronos styles.

## The Boxed Sets offer a complete set of digital gauges ready to install.



The **Outboard Set** comes complete with Speedometer and Pitot, Tachometer, Fuel gauge and Voltmeter.



The **Inboard Set** comes with Speedometer and Pitot, Tachometer, Fuel gauge, Voltmeter, Water Temp gauge and Oil Pressure gauge.

## Standard Boxed Sets



Style	Factory	Description	
Euro	KT9799	Inboard Set	6 gauge
Euro	KT9796	Outboard Set	4 gauge
Euro White	KT9798	Inboard Set	6 gauge
Euro White	KT9795	Outboard Set	4 gauge
Dress White	KT9797	Inboard Set	6 gauge
Dress White	KT9794	Outboard Set	4 gauge
Chesapeake SS White	KTF001	Inboard Set	6 gauge
Chesapeake SS White	KTF002	Outboard Set	4 gauge
Chesapeake SS Black	KTF003	Inboard Set	6 gauge
Chesapeake SS Black	KTF004	Outboard Set	4 gauge
Kronos	KTF024	Inboard Set	6 gauge
Spun Silver	KTF0184	Inboard Set	6 gauge
Spun Silver	KTF0182	Outboard Set	4 gauge
Platinum	KTF0183	Outboard Set	4 gauge

## Boxed Sets with GPS Speedometers

Essex Contour	KTF056	Outboard Set	4 gauge
Chesapeake Black SS	KTF064	Inboard Set	6 gauge
Chesapeake Black SS	KTF062	Outboard Set	4 gauge
Chesapeake White SS	KTF063	Inboard Set	6 gauge
Chesapeake White SS	KTF061	Outboard Set	4 gauge

## An easy plug and play instrument replacement for



### NMEA 2000 Digital Kit

#### KTF034 - Base Set

MG3000 - Tachometer (7000 RPM)  
MG1000 - Speedometer (60 MPH)

#### KTF032 - 4 O/B Set

MG3000 - Tachometer (7000 RPM)  
MG1000 - Speedometer (60 MPH)  
Trim gauge  
Water Pressure gauge (0-60 PSI)

### SmartCraft Digital Kit

#### KTF042 - Base Set

MG3000 - Tachometer (7000 RPM)  
MG1000 - Speedometer (60 MPH)

#### KTF043 - 4 O/B Set

MG3000 - Tachometer (7000 RPM)  
MG1000 - Speedometer (60 MPH)  
Trim gauge  
Water Pressure gauge (0-60 PSI)

### Yamaha Digital Kit

#### KTF059 - Base Set

MG3000 - Tachometer (7000 RPM)  
MG1000 - Speedometer (60 MPH)

#### KTF060 - 4 O/B Set

MG3000 - Tachometer (7000 RPM)  
MG1000 - Speedometer (60 MPH)  
Trim gauge  
Water Pressure gauge (0-60 PSI)



## Digital Instruments



Communicates directly with the



**YAMAHA**

**SAE J1939**

engine ECUs providing an important link between the operator and the engine.

A great value for those boat owners looking to upgrade the instruments on their boat with American Made, OEM drop-in replacements.

### Basic Set - KFT032 (NMEA 2000) / KTF042 (SmartCraft) / KTF059 (Yamaha)



#### MG3000 7000 RPM Tachometer - 4-inch (3.375" dia. hole)

The MG3000 Tachometer features large lighted buttons with tactile feedback, LED back lighted dial, fog-resistant polycarbonate lens and plug and play connectorized cases. The daylight readable LCD is visible even in direct sunlight. A user-friendly, intuitive design makes navigating the menu interface easy to use. Customize the MG3000 with user definable screens and alarms.

The MG3000 Tachometer connects to the CAN bus and communicates directly with the engine ECU. Engine data, fault codes and alarms are displayed on the Tachometer's LCD display\*.

The MG3000 Tachometer is so much more than just a digital repeater. There are 3 analog inputs which can be used for Air Temperature, Trim, Fuel Level and Water Pressure and a NMEA 0183 input for a GPS antenna for Lat/Long, Heading, COG and clock.

#### MG1000 60 MPH Speedometer - 4-inch (3.375" dia. hole)

The MG1000 Speedometer connects directly to the MG3000 Tachometer. Like the Tachometer, the Speedometer has the look and function of an analog gauge, but the pointer is driven with a digital stepper motor for increased accuracy. Speed data can be displayed from the CAN bus, GPS antenna or connected paddle wheel.

\*Note: Some proprietary engine manufacturer alarms may not display or may be displayed incorrectly.

### 4 Gauge Box Set - KFT034 (NMEA 2000) / KTF043 (SmartCraft) / KTF060 (Yamaha)



#### MG3000 7000 RPM Tachometer - 4-inch (3.375" dia. hole)

#### MG1000 60 MPH Speedometer - 4-inch (3.375" dia. hole)

#### Digital Trim and Water Pressure gauges 2-inch (2.0625" dia. hole)

The discrete Digital Trim and Water Pressure gauges connect directly to the MG3000 Tachometer. Digital signals are processed by the engine and sent through the Tachometer providing an easy to use display of the information. The stepper motor driven pointer provides accurate feedback of Trim and Water Pressure reported by the engine ECU.

### Harnesses Available -

- KTF033 - Suzuki - Engine to Backbone Harness
- KTF035 - Honda Marine - Engine to Backbone Harness
- KTF036 - Yamaha - Engine to Backbone Harness
- KTF044 - Mini SmartCraft Backbone Harness
- KTF138 - Mini NMEA 2000 Backbone Harness
- KTF069 - Discrete instrument connector Harness





# Depth Sounders



## Depth Sounders

Factory #	Style	Transom	In-Hull	Thru-Hull
DS0101	Euro Black	12850	12851	12894
DS0100	Euro White	12950	12951	12994
DS0103	Euro Beige SS		15151	
DS0112	Coral	13050	13051	
DS0114	Dress White	13150	13151	13194
DS0110	Ches. SS White	13850	13851	13894
DS0111	Ches. SS Black	13750	13751	13795
DS0101	Professional Red	12850	12851	12894
DS0131	Kronos	19150	19151	
DS0104	Spun Silver	36150	36151	

## Dual Temperature Depth Sounders

Factory #	Style	Transom	Thru-Hull
DS1009	Dress White	13154	
DS1004	Ches. SS White	13852	13896
DS1002	Ches. SS Black	13752	13797

## Features & Benefits

- Depth range: 1- 61 meters (3 -199 feet)
- Deep and Shallow water alarms
- Programmable keel off-set
- Automatic gain control
- Back lighting for maximum night vision;
- Metric or US standard units
- Easy to install!

Dual Temperature Depth Sounder can display outside air temperatures, baitwell or external water temperatures from 0°C to 100°C (32°F to 200 °F).

## Accuracy at High Speeds

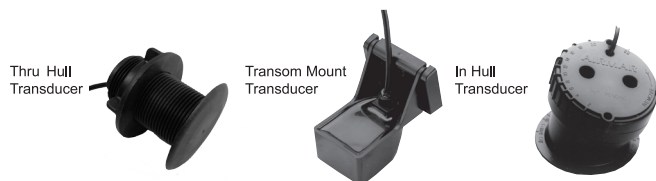
Our Engineers have incorporated the latest microprocessor technology and proprietary software designed to take advantage of today's high performance transducers. As a result this depth sounder outperforms all others on the market in its high speed capabilities and accuracy when faced with various bottom conditions.

The Depth Sounders from Faria offer a 3-199 foot (1-61meters) depth capability, with an automatic gain control, backlighting for maximum night vision, keel offset, and deep and shallow water alarms.

Depth can be read in meters, and feet. With its oversized back-lit display depth can be easily read in any condition. Audible and Visual alarms let the boater know when a shallow or deep water condition exist. A programmable keel offset lets you adjust the offset from the keel at the display.

## Transducers

The Depth Sounder is available with either a Transom, In-Hull or a Thru Hull mounted transducer.

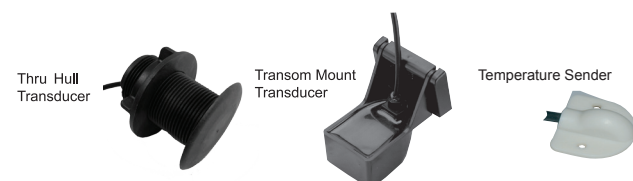


## Dual Temperature Depth Sounder

The dual display of the Dual Temperature Depth Sounder can also show temperature of the water, baitwell or the ambient air temperature all from one 2" gauge.

## Senders and Transducers

The Dual Temperature Depth Sounder comes with a Transom mounted transducer and temperature sender.



**Harnesses and connectors included.**

**Fits a standard 2 1/16" (53 mm) gauge mounting hole.**



Dashboards are getting more and more crowded as today's technology explodes on to our boats. Often there are so many beeps and buzzes it's hard to see just what's happening. Of course, you can fill up your dash with lots of little two inch discrete gauges but that too is often just as confusing. That's why Faria Beede developed our multi-function gauge.

We've combined the most useful discrete gauges into a single instrument and then styled them to match many of our standard styles.

Let us be your solution for dash overload.

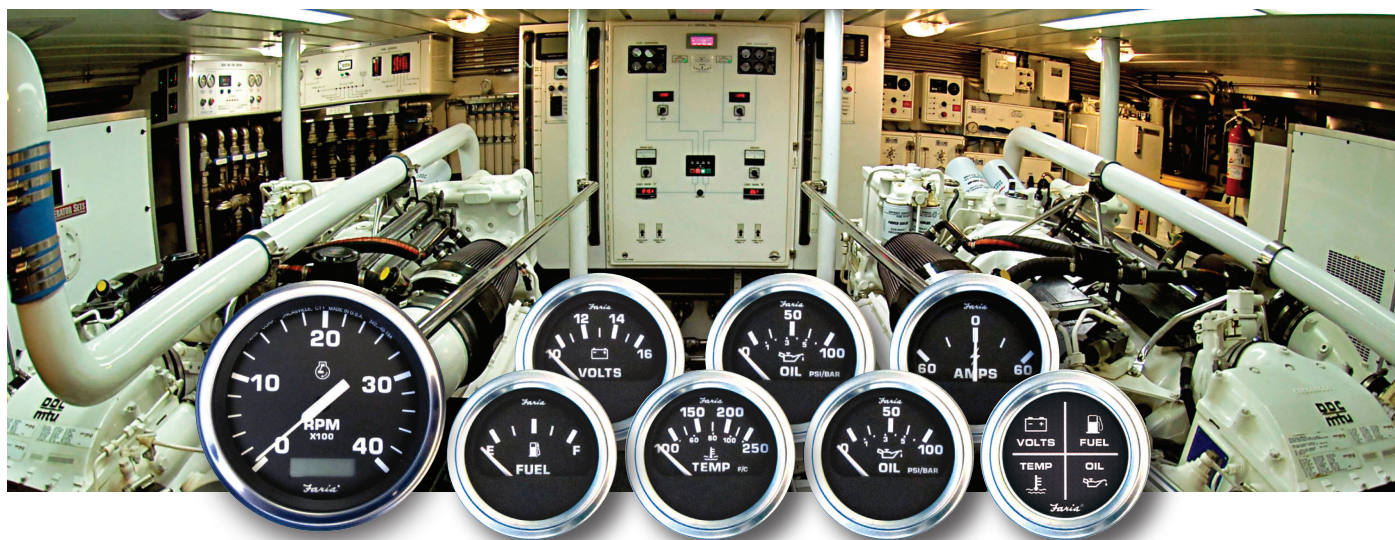
## Multifunction Indicators

Catalog#	Factory #	Size	Style	Description
33751	GF0007	4	Ches. Black SS	Multifunction [Fuel, Oil PSI, Water Temp., Voltmeter]
33851	GF0008	4	Ches. White SS	Multifunction [Fuel, Oil PSI, Water Temp., Voltmeter]
33151	GF0003	4	Dress White	Multifunction [Fuel, Oil PSI, Water Temp., Voltmeter]
32851	GF0001	4	Euro Black	Multifunction [Fuel, Oil PSI, Water Temp., Voltmeter]
32951	GF0002	4	Euro White	Multifunction [Fuel, Oil PSI, Water Temp., Voltmeter]

## 5-inch Instruments

Factory #	Size	Style	Description
TCH223	5	Euro SS	Tachometer (6000 RPM) (Gas)
TD9156	5	Euro SS	Tachometer with Hourmeter (4000 RPM) (Diesel) (Mag Pick-Up)
SE9367	5	Euro SS	Speedometer (65 MPH) (Pitot)
TC9381	5	Ches. White SS	Tachometer (6000 RPM) (Gas)
TC9369	5	Ches. White SS	Tachometer with Hourmeter (4000 RPM) (Diesel) (Mag Pick-Up)
SE9504	5	Ches. White SS	Speedometer (65 MPH) (Pitot)
TCH225	5	Ches. Black SS	Tachometer (6000 RPM) (Gas)
TD9210	5	Ches. Black SS	Tachometer with Hourmeter (4000 RPM) (Diesel) (Mag Pick-Up)

## Heavy Duty Instruments



Heavy Duty instruments are performance proven under the most demanding conditions. Major manufacturers worldwide install Faria Beede instruments as original equipment.

You can rely on our American made products for quality, durability and easy installation.

- Stainless steel bezels
- Anti-scratch glass lens
- Precision molded plastic cases for corrosion resistance and longevity
- Adaptable to 24 VDC systems (with optional resistor card)
- 12 volt DC negative ground
- Durable, rugged construction

For more information please contact Faria Beede at  
sales@FariaBeede.com or 860.848.9271



Made in the USA



## Chesapeake Black Stainless Steel

Perimeter-lighted black dial with stylish blue and white graphics, polished stainless steel bezel, contoured white pointer, and domed glass lens.

Catalog	Factory	Size	Description
KTF003	KTF003		<b>Boxed Set-</b> Inboard (Speedo (60 MPH) (Mech)   Tach (6000 RPM)   Fuel Level   Voltmeter (10-16 VDC)   Water Temp (100-250 F)   Oil PSI (80 PSI)
KTF064	KTF064		<b>Boxed Set-</b> Inboard (Speedo (60 MPH) (GPS)   Tach (6000 RPM)   Fuel Level   Voltmeter (10-16 VDC)   Water Temp (100-250 F)   Oil PSI (80 PSI)
KTF004	KTF004		<b>Boxed Set-</b> Outboard (Speedo (60 MPH) (Mech)   Tach (7000 RPM)   Fuel Level   Voltmeter (10-16 VDC)
KTF062	KTF062		<b>Boxed Set-</b> Outboard (Speedo (60 MPH)(GPS)   Tach (7000 RPM)   Fuel Level   Voltmeter (10-16 VDC)

### Depth Sounders

13752	DS1002	2	Depth Sounder with Air and Water Temperature
13797	DS1002	2	Depth Sounder with Air and Water Temperature (Thru-Hull Transducer) (Requires 1 5/8" hole in vessel.)
13750	DS0111	2	Depth Sounder (Transom Mounted Transducer)
13751	DS0111	2	Depth Sounder (In-Hull Mounted Transducer)
13795	DS0111	2	Depth Sounder (Thru-Hull Transducer) (Requires 1 5/8" hole in vessel.)

### Tachometers

33710	TC9785	4	Tachometer (6000 RPM) (Gas) (Inboard & I/O)
33718	TC9035	4	Tachometer (7000 RPM) (All outboard)
33742	TD9127	4	Tachometer (4000 RPM) (Diesel) (Mechanical takeoff & var ratio alt)
33719	TD9732	4	Tachometer (4000 RPM) (Diesel) (Mag Pick-Up)
33732	TC9127	4	Tachometer with Hourmeter (6000 RPM) (Gas) (Inboard)
33740	TCH009	4	Tachometer with Hourmeter (7000 RPM) (Gas) (Outboard)
33750	TC9884	4	Tachometer (7000 RPM) with SystemCheck Indicator (Gas) (I/E Outboard)

### GPS Speedometers

33730	SGP012	4	Speedometer (80 MPH) (GPS) (LCD)
33726	SGP004	4	Speedometer (60 MPH) (GPS) (LCD)
33749	SGP114	4	Speedometer (60 MPH) (GPS) (Studded)
33728	SGP006	4	Speedometer (50 KNOTS) (GPS) (LCD)

### Speedometers

33704	SE9509	4	Speedometer (60 MPH) (Mechanical)
33705	SE9512	4	Speedometer (80 MPH) (Mechanical)
33722	SE9736	4	Speedometer (50 Knot) (Mechanical)

### Multi-Function Instruments

33701	SY9625	4	Synchronizer (Dual Engine)
33751	GF0007	4	Multifunction [Fuel Level   Oil PSI (80 PSI)   Water Temp (100-250 F)   Voltmeter (10-16 VDC)]

### Indicators

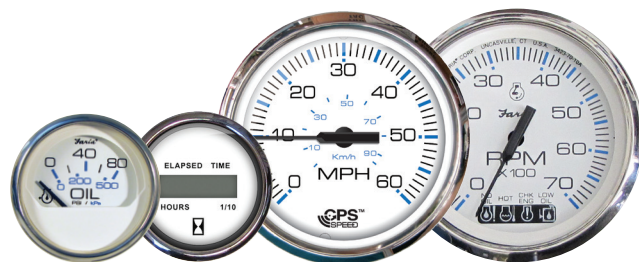
13701	GP9368	2	Fuel Level Gauge (E-1/2-F)	13707	GP9402	2	Trim Gauge (Mercury/Mariner/Mercruiser/Volvo DP/ Yamaha-2001 and newer)
13721	GP9777	2	Fuel Level Gauge (Metric)	13709	GP9414	2	Trim Gauge (I/E/Suzuki Outboard)
13702	GP9640	2	Oil Pressure Gauge (80 PSI)	13736	AP9530	2	Ammeter (60-0-60)
13728	GP9779	2	Oil Pressure Gauge (5 BAR) (Metric)	13726	VP7910	2	Battery Condition Indicator (12 VDC)
13729	GP9788	2	Oil Pressure Gauge (10 BAR) (Metric)	13791	CL1027	2	Clock (Quartz) (Analog)
13712	OP1018	2	Water Pressure Gauge Kit (30 PSI)	13713	MH0055	2	Hourmeter (10,000 hrs) (12-32 VDC)
13706	GP9449	2	Cylinder Head Temperature (60 - 220 F) with sender	13715	MH0239	2	Hourmeter [Digital] (12-32 volts)
13704	GP9142	2	Water Temperature Gauge (100-250 F)	13725	GP7377	2	Rudder Angle Indicator
13732	GP9174	2	Water Temperature Gauge (40-120 C) (Metric)	13705	VP9154	2	Voltmeter (10-16 VDC)





# Chesapeake White Stainless Steel

Perimeter-lighted white dial with stylish blue and black graphics, polished stainless steel bezel, contoured black pointer, and domed glass lens.



Catalog	Factory	Size	Description				
KTF001	KTF001		<b>Boxed Set</b> - Inboard (Speedo (60 MPH) (Mech)   Tach (6000 RPM)   Fuel Level   Voltmeter (10-16 VDC)   Water Temp (100-250 F)   Oil PSI (80 PSI)				
KTF063	KTF063		<b>Boxed Set</b> - Inboard (Speedo (60 MPH) (GPS)   Tach (6000 RPM)   Fuel Level   Voltmeter (10-16 VDC)   Water Temp (100-250 F)   Oil PSI (80 PSI)				
KTF002	KTF002		<b>Boxed Set</b> - Outboard (Speedo (60 MPH) (Mech)   Tach (7000 RPM)   Fuel Level   Voltmeter (10-16 VDC)				
KTF061	KTF061		<b>Boxed Set</b> - Outboard (Speedo (60 MPH) (GPS)   Tach (7000 RPM)   Fuel Level   Voltmeter (10-16 VDC)				
Depth Sounders							
13852	DS1004	2	Depth Sounder with Air and Water Temperature				
13896	DS1004	2	Depth Sounder with Air and Water Temperature (Thru-Hull Transducer) (Requires 1 5/8" hole in vessel.)				
13850	DS0110	2	Depth Sounder (Transom Mounted Transducer)				
13851	DS0110	2	Depth Sounder (In-Hull Mounted Transducer)				
13894	DS0110	2	Depth Sounder (Thru-Hull Transducer) (Requires 1 5/8" hole in vessel.)				
Tachometers							
33807	TC9796	4	Tachometer (6000 RPM) (Gas) (Inboard & I/O)				
33817	TC9002	4	Tachometer (7000 RPM) (All outboard)				
33842	TD9128	4	Tachometer (4000 RPM) (Diesel) (Mechanical takeoff & var ratio alt)				
33818	TD9733	4	Tachometer (4000 RPM) (Diesel) (Mag Pick-Up)				
33832	TC9128	4	Tachometer with Hourmeter (6000 RPM) (Gas) (Inboard)				
33840	TCH008	4	Tachometer with Hourmeter (7000 RPM) (Gas) (Outboard)				
33834	TD9108	4	Tachometer with Hourmeter (4000 RPM) (Diesel) (Mech takeoff & var ratio alt)				
33841	TD9118	4	Tachometer with Hourmeter (4000 RPM) (Diesel) (Mag Pick-Up)				
33850	TC9881	4	Tachometer (7000 RPM) with SystemCheck Indicator (Gas) (I/E Outboard)				
33860	TC4025	4	Tachometer (7000 RPM) with Suzuki Monitor (Gas) (Suzuki Outboard)				
GPS Speedometers							
33829	SGP010	4	Speedometer (80 MPH) (GPS)				
33826	SGP003	4	Speedometer (60 MPH) (GPS)				
33839	SGP113	4	Speedometer (60 MPH) (GPS) (Studded)				
33827	SGP005	4	Speedometer (50 KNOTS) (GPS)				
Speedometers							
33811	SE9521	4	Speedometer (60 MPH) (Mechanical)				
33819	SE9522	4	Speedometer (80 MPH) (Mechanical)				
33821	SE9740	4	Speedometer (30 Knot) (Mechanical)				
33822	SE9741	4	Speedometer (50 Knot) (Mechanical)				
Multi-Function Instruments							
33801	SY9629	4	Synchronizer (Dual Engine)				
33851	GF0008	4	Multifunction [Fuel Level   Oil PSI (80 PSI)   Water Temp (100-250 F)   Voltmeter (10-16 VDC)]				
Indicators							
13801	GP9373	2	Fuel Level Gauge (E-1/2-F)	13889	GP7440	2	Trim Gauge (Honda)
13818	GP9791	2	Fuel Level Gauge (Metric)	13807	GP9649	2	Trim Gauge (Mercury/Mariner/Mercruiser/Volvo DP/ Yamaha-2001 and newer)
13820	GP9781	2	Tank Level Gauge (Potable water) (Metric)				
13802	GP9647	2	Oil Pressure Gauge (80 PSI)	13809	GP9418	2	Trim Gauge (J/E/Suzuki Outboard)
13803	GP9689	2	Oil Pressure Gauge (100 PSI)	13808	GP9734	2	Trim Gauge (OMC Cobra/Volvo SX)
13825	GP9783	2	Oil Pressure Gauge (10 BAR) (Metric)	13831	AP9529	2	Ammeter (60-0-60)
13826	GP9813	2	Transmission Pressure (25 BAR/350 PSI) (Metric)	13823	VP7911	2	Battery Condition Indicator (12 VDC)
13812	OP1022	2	Water Pressure Gauge Kit (30 PSI)	13891	CL1026	2	Clock (Quartz) (Analog)
13875	OP1043	2	Water Pressure Gauge Kit (60 PSI)	13813	MH0059	2	Hourmeter (10,000 hrs) (12-32 VDC)
13806	GP9454	2	Cylinder Head Temperature (60 - 220 F) with sender	13815	MH0211	2	Hourmeter [Digital] (12-32 volts)
13829	GP9784	2	Cylinder Head Temperature (20 - 100 C) with sender	13822	GP7378	2	Rudder Angle Indicator
13804	GP9146	2	Water Temperature Gauge (100-250 F)	13805	VP9158	2	Voltmeter (10-16 VDC)
13828	GP9178	2	Water Temperature Gauge (40-120 C) (Metric)				



## Coral

Perimeter-lighted black dial with stylish white and blue graphics, black aluminum bezel with burnished leading edge, contoured white pointer, and flat glass lens.

Catalog	Factory	Size	Description						
13050	DS0112	2	Depth Sounder (Thru-Hull Transducer) (Requires 1 5/8" hole in vessel.)						
13051	DS0112	2	Depth Sounder (In-Hull Mounted Transducer)						
Tachometers									
33004	TC9493	4	Tachometer (6000 RPM) (Gas) (Inboard & I/O)						
33005	TC9036	4	Tachometer (7000 RPM) (All outboard)						
33042	TD9126	4	Tachometer (4000 RPM) (Diesel) (Mechanical takeoff & var ratio alt)						
33003	TD9673	4	Tachometer (4000 RPM) (Diesel) (Mag Pick-Up)						
33032	TC9126	4	Tachometer with Hourmeter (6000 RPM) (Gas) (Inboard)						
33040	TCH011	4	Tachometer with Hourmeter (7000 RPM) (Gas) (Outboard)						
Speedometers									
33009	SE9216	4	Speedometer (55 MPH) (Mechanical)						
33010	SE9218	4	Speedometer (80 MPH) (Mechanical)						
Multi-Function Instruments									
33007	SY9601	4	Synchronizer (Dual Engine)						
Indicators									
13001	GP9346	2	Fuel Level Gauge (E-1/2-F)		13017	GP9348	2	Trim Gauge (Mercury/Mariner/Mercruiser/Volvo DP/ Yamaha-2001 and newer)	
13020	GP9390	2	Fuel Level Gauge (Metric)						
13002	GP9527	2	Oil Pressure Gauge (80 PSI)		13016	GP9273	2	Trim Gauge (I/E/Suzuki Outboard)	
13003	OP1000	2	Water Pressure Gauge Kit (30 PSI)		13012	VP7903	2	Battery Condition Indicator (12 VDC)	
13009	GP9405	2	Cylinder Head Temperature (60 - 220 F) with sender		13013	MH0010	2	Hourmeter (10,000 hrs) (12-32 VDC)	
13004	GP9461	2	Water Temperature Gauge (100-250 F)		13010	VP9106	2	Voltmeter (10-16 VDC)	



The choice of the world's leading boat manufacturers since 1957.

All of our instruments are performance proven under the most demanding conditions. They are factory installed original equipment with major manufacturers worldwide. You can rely on Faria Beede Instruments, Inc. for world class quality, dependability and ease of installation.

Contact Faria Beede for OEM gauge replacements. Many of the OEM styles can still be purchased through our Marine distributors. Before you contact us, have a picture of the gauge and the part number readily available. This helps us to identify the gauge, so that we can assist you better.





## Dress White

Perimeter-lighted white dial with bold black graphics, white aluminum bezel, contoured black pointer, and flat glass lens.



Catalog	Factory	Size	Description				
KT9797	KT9797		<b>Boxed Set</b> - Inboard (Speedo (55 MPH) (Mech)   Tach (6000 RPM)   Fuel Level   Voltmeter (10-16 VDC)   Water Temp (100-250 F)   Oil PSI (80 PSI)				
KT9794	KT9794		<b>Boxed Set</b> - Outboard (Speedo (55 MPH) (Mech)   Tach (7000 RPM)   Fuel Level   Voltmeter (10-16 VDC)				
Depth Sounders							
13154	DS1009	2	Depth Sounder with Air and Water Temperature				
13150	DS0114	2	Depth Sounder (Transom Mounted Transducer)				
13151	DS0114	2	Depth Sounder (In-Hull Mounted Transducer)				
13194	DS0114	2	Depth Sounder (Thru-Hull Transducer) (Requires 1 5/8" hole in vessel.)				
Tachometers							
33103	TC9691	4	Tachometer (6000 RPM) (Gas) (Inboard & I/O)				
33104	TC9038	4	Tachometer (7000 RPM) (All outboard)				
33142	TD9124	4	Tachometer (4000 RPM) (Diesel) (Mechanical takeoff & var ratio alt)				
33121	TD9706	4	Tachometer (4000 RPM) (Diesel) (Mag Pick-Up)				
33132	TC9124	4	Tachometer with Hourmeter (6000 RPM) (Gas) (Inboard)				
33140	TCH013	4	Tachometer with Hourmeter (7000 RPM) (Gas) (Outboard)				
33150	TC9887	4	Tachometer (7000 RPM) with SystemCheck Indicator (Gas) (I/E Outboard)				
GPS Speedometers							
33147	SGP111	4	Speedometer (60 MPH) (GPS) (Studded)				
Speedometers							
33112	SE9475	4	Speedometer (55 MPH) (Mechanical)				
33113	SE9476	4	Speedometer (80 MPH) (Mechanical)				
Multi-Function Instruments							
33105	SY9618	4	Synchronizer (Dual Engine)				
33151	GF0003	4	Multifunction [Fuel Level   Oil PSI (80 PSI)   Water Temp (100-250 F)   Voltmeter (10-16 VDC)]				
Indicators							
13101	GP9389	2	Fuel Level Gauge (E-1/2-F)	13122	GP9712	2	Trim Gauge (Mercury/Mariner/Mercruiser/Volvo DP/ Yamaha-2001 and newer)
13117	GP9722	2	Fuel Level Gauge (Metric)				
13118	GP9723	2	Tank Level Gauge (Potable water)	13123	GP9711	2	Trim Gauge (I/E/Suzuki Outboard)
13102	GP9573	2	Oil Pressure Gauge (80 PSI)	13149	AP9526	2	Ammeter (60-0-60)
13108	OP1006	2	Water Pressure Gauge Kit (30 PSI)	13152	CL1014	2	Clock (Quartz) (Analog)
13113	GP9444	2	Cylinder Head Temperature (60 - 220 F) with sender	13121	MH0036	2	Hourmeter (10,000 hrs) (12-32 VDC)
13110	GP9120	2	Water Temperature Gauge (100-250 F)	13130	MH0240	2	Hourmeter [Digital] (12-32 volts)
13112	GP9631	2	Water Temperature Gauge (40-120 C) (Metric)	13120	VP9139	2	Voltmeter (10-16 VDC)

## Essex

Light-piped fire red pointers with stainless steel hubs. Red back-lighted, contoured silver dial with stylish black graphics, stainless steel bezel with domed fog resistant lens. (Deutsch connectorized cases.)

(Requires KTF065 Harness - HN0897 - Open lead connector to Instrument adapter (Deutsch connector) (3 pack) for additional Indicator connections.)



Catalog	Factory	Size	Description				
KTF056	KTF056		Boxed Set - Outboard (Speedo (45 MPH) (GPS)   Tach w/ Hourmeter (7000 RPM)   Fuel Level   Voltmeter (10-16 VDC)				
Depth Sounders							
16150	DS0104	2	Depth Sounder (Transom Mounted Transducer)				
16151	DS0104	2	Depth Sounder (In-Hull Mounted Transducer)				
Indicators							
22005	GBC661	2	Trim Gauge (Mercury/Mariner/Mercruiser/Volvo DP/ Yamaha-2001 and newer)	22007	GBC663	2	Trim Gauge (Honda)
22006	GBC662	2	Trim Gauge (I/E/Suzuki Outboard)	22008	OP1186	2	Water Pressure Gauge Kit (30 PSI)



## Euro

Perimeter-lighted black dial with bold white graphics, black aluminum bezel, contoured white pointer, and flat glass lens.

Catalog	Factory	Size	Description				
KT9799	KT9799		Boxed Set - Inboard (Speedo (55 MPH) (Mech)   Tach (6000 RPM)   Fuel Level   Voltmeter (10-16 VDC)   Water Temp (100-250 F)   Oil PSI (80 PSI)				
KT9796	KT9796		Boxed Set - Outboard (Speedo (55 MPH) (Mech)   Tach (7000 RPM)   Fuel Level   Voltmeter (10-16 VDC)				
Depth Sounders							
12850	DS0101	2	Depth Sounder (Transom Mounted Transducer)				
12851	DS0101	2	Depth Sounder (In-Hull Mounted Transducer)				
12894	DS0101	2	Depth Sounder (Thru-Hull Transducer) (Requires 1 5/8" hole in vessel.)				
Tachometers							
32804	TC9643	4	Tachometer (6000 RPM) (Gas) (Inboard & I/O)				
32805	TC9011	4	Tachometer (7000 RPM) (All outboard)				
32842	TD9122	4	Tachometer (4000 RPM) (Diesel) (Mechanical takeoff & var ratio alt)				
32803	TD9671	4	Tachometer (4000 RPM) (Diesel) (Mag Pick-Up)				
32832	TC9122	4	Tachometer with Hourmeter (6000 RPM) (Gas) (Inboard)				
32840	TCH015	4	Tachometer with Hourmeter (7000 RPM) (Gas) (Outboard)				
32834	TD9102	4	Tachometer with Hourmeter (4000 RPM) (Diesel) (Mech takeoff & var ratio alt)				
32841	TD9112	4	Tachometer with Hourmeter (4000 RPM) (Diesel) (Mag Pick-Up)				
32850	TC9951	4	Tachometer (7000 RPM) with SystemCheck Indicator (Gas) (I/E Outboard)				
32860	TC4003	4	Tachometer (7000 RPM) with Suzuki Monitor (Gas) (Suzuki Outboard)				
GPS Speedometers							
32816	SGP110	4	Speedometer (60 MPH) (GPS) (Studded)				
Speedometers							
32808	SE9465	4	Speedometer (35 MPH) (Mechanical)				
32810	SE9463	4	Speedometer (55 MPH) (Mechanical)				
32812	SE9460	4	Speedometer (80 MPH) (Mechanical)				
32809	SE9659	4	Speedometer (30 Knot) (Mechanical)				
32811	SE9658	4	Speedometer (50 Knot) (Mechanical)				
Multi-Function Instruments							
32807	SY9602	4	Synchronizer (Dual Engine)				
32851	GF0001	4	Multifunction [Fuel Level   Oil PSI (80 PSI)   Water Temp (100-250 F)   Voltmeter (10-16 VDC)]				
Indicators							
12801	GP9357	2	Fuel Level Gauge (E-1/2-F)	12828	GP9374	2	Trim Gauge (Mercury/Mariner/Mercruiser/Volvo DP/ Yamaha-2001 and newer)
12802	GP9322	2	Fuel Level Gauge (Metric)				
12830	GP9324	2	Tank Level Gauge (Potable water)	12827	GP9305	2	Trim Gauge (I/E/Suzuki Outboard)
12831	GP9326	2	Tank Level Gauge (Potable water) (Metric)	12829	GP9702	2	Trim Gauge (OMC Cobra/Volvo SX)
12803	GP9599	2	Oil Pressure Gauge (80 PSI)	12822	AP9523	2	Ammeter (60-0-60)
12845	GP9597	2	Oil Pressure Gauge (100 PSI)	12823	VP7901	2	Battery Condition Indicator (12 VDC)
12805	GP9511	2	Oil Pressure Gauge (5 BAR) (Metric)	12825	CL1008	2	Clock (Quartz) (Analog)
12807	GP9513	2	Oil Pressure Gauge (10 BAR) (Metric)	12824	MH0009	2	Hourmeter (10,000 hrs) (12-32 VDC)
12810	OP1004	2	Water Pressure Gauge Kit (30 PSI)	12835	MH0232	2	Hourmeter [Digital] (12-32 volts)
12875	OP1014	2	Water Pressure Gauge Kit (60 PSI)	12833	GP7373	2	Rudder Angle Indicator
12819	GP9438	2	Cylinder Head Temperature (60 - 220 F) with sender	12821	VP9134	2	Voltmeter (10-16 VDC)
12820	GP9440	2	Cylinder Head Temperature (20 - 100 C) with sender	12860	VP9191	2	Voltmeter (20-32 VDC)
12812	GP9118	2	Water Temperature Gauge (100-250 F)				
12814	GP9124	2	Water Temperature Gauge (40-120 C) (Metric)				
Blank Gauges							
32861	TC9640	4	Blank gauge fill				
12861	AP9475	2	Blank gauge fill				





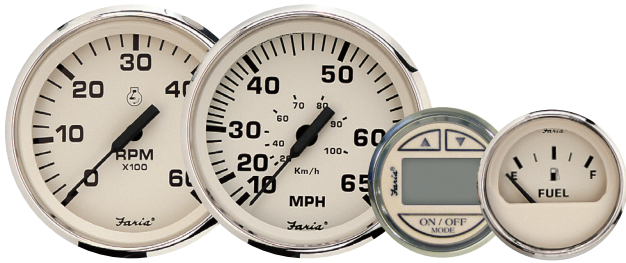
# Euro White

Perimeter-lighted white dial with bold black graphics, black aluminum bezel, contoured white pointer, and flat glass lens.



Catalog	Factory	Size	Description						
KT9798	KT9798		<b>Boxed Set</b> - Inboard (Speedo (55 MPH) (Mech)   Tach (6000 RPM)   Fuel Level   Voltmeter (10-16 VDC)   Water Temp (100-250 F)   Oil PSI (80 PSI)						
KT9795	KT9795		<b>Boxed Set</b> - Outboard (Speedo (55 MPH) (Mech)   Tach (7000 RPM)   Fuel Level   Voltmeter (10-16 VDC)						
Depth Sounders									
12950	DS0100	2	Depth Sounder (Transom Mounted Transducer)						
12951	DS0100	2	Depth Sounder (In-Hull Mounted Transducer)						
12994	DS0100	2	Depth Sounder (Thru-Hull Transducer) (Requires 1 5/8" hole in vessel.)						
Tachometers									
32904	TC9679	4	Tachometer (6000 RPM) (Gas) (Inboard & I/O)						
32905	TC9003	4	Tachometer (7000 RPM) (All outboard)						
32942	TD9123	4	Tachometer (4000 RPM) (Diesel) (Mechanical takeoff & var ratio alt)						
32903	TD9672	4	Tachometer (4000 RPM) (Diesel) (Mag Pick-Up)						
32932	TC9123	4	Tachometer with Hourmeter (6000 RPM) Gas (Inboard)						
32940	TCH014	4	Tachometer with Hourmeter (7000 RPM) (Gas) (Outboard)						
32934	TD9103	4	Tachometer with Hourmeter (4000 RPM) (Diesel) (Mech takeoff & var ratio alt)						
32950	TC9886	4	Tachometer (7000 RPM) with SystemCheck Indicator (Gas) (J/E Outboard)						
Speedometers									
32909	SE9473	4	Speedometer (55 MPH) (Mechanical)						
32910	SE9474	4	Speedometer (80 MPH) (Mechanical)						
Multi-Function Instruments									
32951	GF0002	4	Multifunction [Fuel Level   Oil PSI (80 PSI)   Water Temp (100-250 F)   Voltmeter (10-16 VDC)]						
Indicators									
12901	GP9358	2	Fuel Level Gauge (E-1/2-F)		12916	GP9709	2	Trim Gauge (Mercury/Mariner/Mercruiser/Volvo DP/ Yamaha-2001 and newer)	
12919	GP9323	2	Fuel Level Gauge (Metric)						
12902	GP9596	2	Oil Pressure Gauge (80 PSI)		12915	GP9708	2	Trim Gauge (J/E/Suzuki Outboard)	
12926	GP9514	2	Oil Pressure Gauge (10 BAR) (Metric)		12933	VP7908	2	Battery Condition Indicator (12 VDC)	
12903	OP1005	2	Water Pressure Gauge Kit (30 PSI)		12923	CL1013	2	Clock (Quartz) (Analog)	
12910	GP9439	2	Cylinder Head Temperature (60 - 220 F) with sender		12913	MH0017	2	Hourmeter (10,000 hrs) (12-32 VDC)	
12904	GP9119	2	Water Temperature Gauge (100-250 F)		12911	VP9136	2	Voltmeter (10-16 VDC)	
12929	GP9125	2	Water Temperature Gauge (40-120 C) (Metric)		12960	VP9192	2	Voltmeter (20-32 VDC)	
12989	GP7448	2	Trim Gauge (Honda)						





## Euro Beige Stainless Steel

Perimeter-lighted beige dial with bold black graphics, polished stainless steel bezel, contoured black pointer, and domed glass lens.

Catalog	Factory	Size	Description
15151	DS0103	2	Depth Sounder (In-Hull Mounted Transducer)

### Tachometers

35104	TC9610	4	Tachometer (6000 RPM) (Gas) (Inboard & I/O)
35105	TC9016	4	Tachometer (7000 RPM) (All outboard)
35132	TC9176	4	Tachometer with Hourmeter (6000 RPM) Gas) (Inboard)
35140	TCH027	4	Tachometer with Hourmeter (7000 RPM) (Gas) (Outboard)

### Speedometers

35122	SE9899	4	Speedometer (65 MPH) (Mechanical)
-------	--------	---	-----------------------------------

### Indicators

15101	GP9919	2	Fuel Level Gauge (E-1/2-F)	15128	GP9921	2	Trim Gauge (Mercury/Mariner/Mercruiser/Volvo DP/ Yamaha-2001 and newer)
15103	GP9923	2	Oil Pressure Gauge (80 PSI)	15127	GP9917	2	Trim Gauge (I/E/Suzuki Outboard)
15110	OP1064	2	Water Pressure Gauge Kit (30 PSI)	15124	MH0106	2	Hourmeter (10,000 hrs) (12-32 VDC)
15112	GP9131	2	Water Temperature Gauge (100-250 F)				
15121	VP9104	2	Voltmeter (10-16 VDC)				



## Kronos

Polished Stainless Steel Bezel, Flat Glass Lens, Perimeter Lighted Spun Aluminum dial with Gold and Black graphics. Gold increments and Logo on dial are Embossed. All instruments include two piece Newport Pointer with White Hub.

Catalog	Factory	Size	Description
KTF024	KTF024		<b>Boxed Set</b> - Inboard (Speedo (60 MPH) (Mech)   Tach (6000 RPM)   Fuel Level  Voltmeter (10-16 VDC)   Water Temp (100-250 F)   Oil PSI (80 PSI)

### Depth Sounders

19150	DS0131	2	Depth Sounder (Transom Mounted Transducer)
19151	DS0131	2	Depth Sounder (In-Hull Mounted Transducer)

### Tachometers

39004	TC9983	4	Tachometer (6000 RPM) (Gas) (Inboard & I/O)
39005	TC9252	4	Tachometer (7000 RPM) (All outboard)
39007	TD9388	4	Tachometer (4000 RPM) (Diesel) (Mag Pick-Up)
39040	TCH305	4	Tachometer with Hourmeter (7000 RPM) (Gas) (Outboard)

### Speedometers

39009	SE9945	4	Speedometer (60 MPH) (Mechanical)
-------	--------	---	-----------------------------------

### Indicators

19001	GP7683	2	Fuel Level Gauge (E-1/2-F)	19005	GP7681	2	Trim Gauge (Mercury/Mariner/Mercruiser/Volvo DP/ Yamaha-2001 and newer)
19002	GP7684	2	Oil Pressure Gauge (80 PSI)	19020	MH0144	2	Hourmeter (10,000 hrs) (12-32 VDC)
19007	OP1171	2	Water Pressure Gauge Kit (30 PSI)	19004	VP7102	2	Voltmeter (10-16 VDC)
19003	GP7682	2	Water Temperature Gauge (100-250 F)				





## Heavy Duty - Black

Perimeter-lighted black dial with bold white graphics, black aluminum SAE style bezel, contoured white pointer, and flat glass lens.



Catalog	Factory	Size	Description					
Tachometers								
43000	TD9135	4	Tachometer (4000 RPM) (Diesel) (Mag Pick-Up)					
43001	TD9137	4	Tachometer with Hourmeter (4000 RPM) (Diesel) (Mech takeoff & var ratio alt)					
43002	TD9682	4	Tachometer (4000 RPM) (Diesel) (Mag Pick-up)					
43003	TD9324	4	Tachometer (4000 RPM) (Diesel) (Mech takeoff & var ratio alt)					
43004	TC9133	4	Tachometer with Hourmeter (6000 RPM) (Gas)					
43005	TC9755	4	Tachometer (6000 RPM) (Gas)					
43006	GF0036	4	Multifunction [Fuel Level   Oil PSI (100 PSI)   Water Temp (100-250 F)   Voltmeter (10-18 VDC)]					
Indicators								
23000	GP0707	2	Fuel Level Gauge (E-1/2-F)		23007	VP0126	2	Voltmeter (10-16 VDC)
23001	GP0633	2	Water Temperature Gauge (100-250 F)		23008	VP0129	2	Voltmeter (14-32 VDC)
23002	GP0629	2	Oil Temperature Gauge (140-320 F/C)		23009	VP0134	2	Battery Condition Indicator (12 VDC)
23003	GP0801	2	Oil Pressure Gauge (80 PSI)		23010	MG0042	2	Hourmeter (10,000 hrs) (12-32 VDC)
23004	GP0829	2	Oil Pressure Gauge (100 PSI)		23011	MG0232	2	Hourmeter [Digital] (12-32 volts)
23005	AP0530	2	Ammeter (30-0-30)		23012	GP0716	2	Warning Light Indicator (4 Icon)
23006	AP0526	2	Ammeter (60-0-60)					

## Heavy Duty - Silver

Perimeter-lighted black dial with bold white graphics, polished stainless steel SAE style bezel, contoured orange pointer, and flat glass lens.



Catalog	Factory	Size	Description					
Tachometers								
44000	TD9134	4	Tachometer (4000 RPM) (Diesel) (Mag Pick-Up)					
44001	TD9136	4	Tachometer with Hourmeter (4000 RPM) (Diesel) (Mech takeoff & var ratio alt)					
44002	TD9679	4	Tachometer (4000 RPM) (Mag Pick-up)					
44003	TD9323	4	Tachometer with Hourmeter (4000 RPM) (Diesel) (Mech takeoff & var ratio alt)					
44004	TC9132	4	Tachometer with Hourmeter (6000 RPM) (Gas)					
44005	TC9754	4	Tachometer (6000 RPM) (Gas)					
44006	GF0035	4	Multifunction [Fuel Level   Oil PSI (100 PSI)   Water Temp (100-250 F)   Voltmeter (10-18 VDC)]					
Indicators								
24000	GP0706	2	Fuel Level Gauge (E-1/2-F)		24007	VP0127	2	Voltmeter (10-16 VDC)
24001	GP0632	2	Water Temperature Gauge (100-250 F)		24008	VP0132	2	Voltmeter (14-32 VDC)
24002	GP0631	2	Oil Temperature Gauge (140-320 F/C)		24009	VP0133	2	Battery Condition Indicator (12 VDC)
24003	GP0802	2	Oil Pressure Gauge (80 PSI)		24010	MG0012	2	Hourmeter (10,000 hrs) (12-32 VDC)
24004	GP0830	2	Oil Pressure Gauge (100 PSI)		24011	MG0239	2	Hourmeter [Digital] (12-32 volts)
24005	AP0531	2	Ammeter (30-0-30)		24012	GP0715	2	Warning Light Indicator (4 Icon)
24006	AP0525	2	Ammeter (60-0-60)					



**Made in the USA**



## Platinum

Polished Stainless Steel Bezel, Domed Fog-Resistant Lens, Perimeter Lighted Black dial with White and Silver graphics. Orange tipped black pointer.

(Requires KTF069 Harness - HN0503 - 12-inch - Instrument to Instrument Harness - Packard connectors for additional Indicator connections.)

Catalog	Factory	Size	Description
KTF0183	KTF0183		<b>Boxed Set</b> - Outboard (Speedo (65 MPH) (Mech)   Tach (7000 RPM)   Fuel Level   Voltmeter (10-16 vDC)
<b>Indicators</b>			
22001	GBC113	2	Trim Gauge (J/E/Suzuki Outboard) (Packard connector)
22002	GBC112	2	Trim Gauge (Honda) (Packard connector)
22003	GBC108	2	Trim Gauge (Mercury/Mariner/Mercruiser/Volvo DP/Yamaha-2001 and newer) (Packard connector)
22004	OP1174	2	Water Pressure Gauge Kit (30 PSI)



## Professional Red

Perimeter-lighted black dial with stylish red and white graphics, black aluminum bezel, tear-drop white pointer, and flat glass lens.

Catalog	Factory	Size	Description
12850	DS0101	2	Depth Sounder (Transom Mounted Transducer)
12851	DS0101	2	Depth Sounder (In-Hull Mounted Transducer)
<b>Tachometers</b>			
34607	TC9933	4	Tachometer (6000 RPM) (Gas) (Inboard & I/O)
34617	TC9026	4	Tachometer (7000 RPM) (All outboard)
34642	TD9640	4	Tachometer (4000 RPM) (Diesel) (Mechanical takeoff & var ratio alt)
34632	TC9152	4	Tachometer with Hourmeter (6000 RPM) (Gas) (Inboard)
34650	TC9934	4	Tachometer (7000 RPM) with SystemCheck Indicator (Gas) (J/E Outboard)
<b>Speedometers</b>			
34611	SE9777	4	Speedometer (60 MPH) (Mechanical)
34619	SE9781	4	Speedometer (80 MPH) (Mechanical)
34622	SE9779	4	Speedometer (50 Knot) (Mechanical)
<b>Multi-Function Instruments</b>			
34601	SY9671	4	Synchronizer (Dual Engine)
<b>Indicators</b>			
14601	GP7282	2	Fuel Level Gauge (E-1/2-F)
14618	GP7283	2	Fuel Level Gauge (Metric)
14602	GP7063	2	Oil Pressure Gauge (80 PSI)
14612	OP1057	2	Water Pressure Gauge Kit (30 PSI)
14675	OP1058	2	Water Pressure Gauge Kit (60 PSI)
14606	GP7164	2	Cylinder Head Temperature (60 - 220 F) with sender
14604	GP7166	2	Water Temperature Gauge (100-250 F)
14607	GP7422	2	Trim Gauge (Mercury/Mariner/Mercruiser/Volvo DP/Yamaha-2001 and newer)
14609	GP7356	2	Trim Gauge (J/E/Suzuki Outboard)
14613	MH0096	2	Hourmeter (10,000 hrs) (12-32 VDC)
14605	VP7042	2	Voltmeter (10-16 VDC)



## Spun Silver

Perimeter-lighted silver dial with bold black graphics, polished stainless steel bezel, contoured black pointer, and domed glass lens.



Catalog	Factory	Size	Description				
KTF0184	KTF0184		<b>Boxed Set</b> - Inboard (Speedo (65 MPH) (Mech)   Tach (7000 RPM)   Fuel Level   Voltmeter (10-16 VDC)   Water Temp (100-250 F)   Oil PSI (80 PSI)				
KTF0182	KTF0182		<b>Boxed Set</b> - Outboard (Speedo (65 MPH) (Mech)   Tach (7000 RPM)   Fuel Level   Voltmeter(10-16 VDC)				
Depth Sounders							
16150	DS0104	2	Depth Sounder (Transom Mounted Transducer)				
16151	DS0104	2	Depth Sounder (In-Hull Mounted Transducer)				
Tachometers							
36004	TC9476	4	Tachometer (6000 RPM) (Gas) (Inboard & I/O)				
36005	TC9004	4	Tachometer (7000 RPM) (All outboard)				
36032	TC9196	4	Tachometer with Hourmeter (6000 RPM) (Gas) (Inboard)				
36050	TC9478	4	Tachometer (7000 RPM) with SystemCheck Indicator (Gas) (I/E Outboard)				
36051	TC4027	4	Tachometer (7000 RPM) with Suzuki Monitor (Gas) (Suzuki Outboard)				
Speedometers							
36009	SE9402	4	Speedometer (55 MPH) (Mechanical)				
36010	SE9910	4	Speedometer (65 MPH) (Mechanical)				
36011	SE9403	4	Speedometer (80 MPH) (Mechanical)				
Indicators							
16001	GP9932	2	Fuel Level Gauge (E-1/2-F)	16016	GP9223	2	Trim Gauge (Mercury/Mariner/Mercruiser/Volvo DP/ Yamaha-2001 and newer)
16002	GP9623	2	Oil Pressure Gauge (80 PSI)	16017	GP9224	2	Trim Gauge (I/E/Suzuki Outboard)
16003	OP1101	2	Water Pressure Gauge Kit (30 PSI)				
16004	GP9428	2	Water Temperature Gauge (100-250 F)	16020	MH0114	2	Hourmeter (10,000 hrs) (12-32 VDC)
				16023	VP9223	2	Voltmeter (10-16 VDC)



### Faria Beede Limited Warranty

During the initial warranty period of 36 months from date of original retail purchase (12 months on fog resistant lens, Depth Sounder, MG1000 and MG3000 and 24 months on Senders, Transducers, Triducers and Smartducers), any instrument(s) that fails due to defects in materials or workmanship will be repaired or replaced at Faria Beede Instruments' option at no charge.

Once beyond the initial warranty period repair fees apply.

For more information go to  
[warranty.faria-instruments.com](http://warranty.faria-instruments.com)

Repair costs can get expensive.

**Restore • Replace • Rebuild • Repower**

with Boxed Sets from Faria Beede. A cost effective OEM gauge replacement option.

Boxed Sets offer a complete set of instruments and everything you need to replace your old OEM installed instruments.

With many styles to choose from, Faria Beede has the look you want and savings that is easy on the budget.

When upgrading your engine don't forget about your instruments.

Faria Beede has an easy plug and play instrument replacement set that works with your new engine.





## Digital Black Fade

Back-lighted white dial with bold black graphics, polished stainless steel bezel, light-piped fire red pointer and black hub, and domed glass lens.

Specifically designed to work with the leading engine manufactures. The MG3000 Black Fade offer the boat manufacturer and enthusiast the most cost effective options for engine monitoring.

Catalog	Factory	Size	Description
KTF032	KTF032		<b>Boxed Set</b> - Tachometer (7000 RPM) ( <b>NMEA 2000</b> ) (MG3000)   Speedometer (60 MPH) (MG1000)   Water Pressure Gauge (60 PSI) (MG Digital)   Trim Gauge (MG Digital)
KTF042	KTF042		<b>Boxed Set</b> - Tachometer (7000 RPM) ( <b>SmartCraft</b> ) (MG3000)   Speedometer (60 MPH) (MG1000)   Water Pressure Gauge (60 PSI) (MG Digital)   Trim Gauge (MG Digital)
KTF060	KTF060		<b>Boxed Set</b> - Tachometer (7000 RPM) ( <b>Yamaha</b> ) (MG3000)   Speedometer (70 MPH/115 KPH) (MG3000)   Water Pressure Gauge (60 PSI) (MG Digital)   Trim Gauge (MG Digital)
KTF034	KTF034		<b>Boxed Set</b> - Tachometer (7000 RPM) ( <b>NMEA 2000</b> ) (MG3000)   Speedometer (60 MPH)(MG1000)
KTF043	KTF043		<b>Boxed Set</b> - Tachometer (7000 RPM) ( <b>SmartCraft</b> ) (MG3000)   Speedometer (60 MPH)(MG1000)
KTF059	KTF059		<b>Boxed Set</b> - Tachometer (7000 RPM) ( <b>Yamaha</b> ) (MG3000)   Speedo (70 MPH/115 KPH) (MG3000)

### Tachometers

41007	MGT019	5	Tachometer (7000 RPM) ( <b>NMEA 2000</b> ) (MG3000)	
41020	MGT040	5	Tachometer (5000 RPM) ( <b>NMEA 2000</b> ) (MG3000)	
41001	MGT017	4	Tachometer (7000 RPM) ( <b>NMEA 2000</b> ) (MG3000)	
41008	MGT045	5	Tachometer (7000 RPM) ( <b>SmartCraft</b> ) (MG3000)	
41002	MGT018	4	Tachometer (7000 RPM) ( <b>SmartCraft</b> ) (MG3000)	
41021	MGT053	4	Tachometer (7000 RPM) ( <b>Yamaha</b> ) (MG3000)	

### Speedometers

41006	MGS028	5	Speedometer (70 MPH) (Depth Sounder) (MG3000) (No Pitot)
41003	SG0007	4	Speedometer (60 MPH/100 KPH) (MG1000) (No Pitot)
41029	MGS032	4	Speedometer (70 MPH/115 KPH) ( <b>Yamaha</b> ) (MG3000) (No Pitot)
41005	MGS010	4	Speedometer (70 MPH/115 KPH) (Depth Sounder) (Pitot Port) (MG3000)

### Multi-Function Instruments

41028	SG7008	4	Multifunction [Fuel Level   Oil PSI (100 PSI)   Water Temp (100-250 F)   Voltmeter (10-16 VDC)]
-------	--------	---	---

### Indicators - requires KTF069 harness

21001	GE0166	2	Fuel Level Gauge (MG Digital)	21006	GE0170	2	Oil Pressure Gauge (100 PSI) (MG Digital)
21004	VE0026	2	Voltmeter (10-16 VDC) (MG Digital)	21002	GE0167	2	Trim Gauge (MG Digital)
21003	GE0168	2	Water Pressure Gauge (60 PSI) (MG Digital)	21007	GE0176	2	Tank Level Gauge (Water) (MG Digital)
21005	GE0169	2	Water Temperature Gauge (100-250°F) (MG Digital)	21008	GE0177	2	Rudder Angle Indicator (MG Digital)

## Digital Harnesses and Accessories

The perfect companion for our Digital instruments. Whether you are re-powering or connecting for the first time, use these harnesses to connect your Digital instruments to the Engine ECU.

KTF033	KTF033	Harness - HN0854 - Suzuki NMEA 2000 (Engine to Back Bone) - Use with KTF138 and KTF037 (Sold separately)
KTF035	KTF035	Harness - HN0855 - Honda NMEA 2000 (Engine to Back Bone) - Use with KTF138 and KTF037 (Sold separately)
KTF036	KTF036	Harness - HN0856 - Yamaha NMEA 2000 (Engine to Back Bone) - Use with KTF138 and KTF037 (Sold separately)
KTF0XX	KTF0XX	Harness - HN0763 - Volvo NMEA 2000 (Engine to Back Bone) - Use with KTF138 and KTF037 (Sold separately)
KTF037	KTF037	Harness - HN0898 - NMEA 2000 (Tachometer to Back Bone)
KTF044	KTF044	Harness - HN0847 - SmartCraft (Tachometer to Back Bone)
KTF070	KTF070	Harness - HN0428 - Yamaha (Tachometer to Back Bone)
KTF138	KTF138	Harness - NMEA 2000 Mini Back Bone Harness
KTF051	KTF051	Harness - HN0862 - Speedometer to Depth Sounder (Deutsch connector)
KTF065	KTF065	Harness - HN0897 - Open lead connector to Instrument adapter (Deutsch connector) (3 pack)
KTF069	KTF069	Harness - HN0503 - 12-inch - Instrument to Instrument Harness - Packard connectors

### GPS Antenna

KTF067	GPS106	GPS Receiver - NMEA 0183 with Deutsch connector
--------	--------	---

### Lighting Replacements

KTF053	LM0067	LIGHTING [LED ] (Bulb replacement pack (BLUE) (4 inch gauges) (2 pack)
KTF052	LM0078	LIGHTING [LED ] (Bulb replacement pack (BLUE) (2 inch gauges) (2 pack)

**Made For  
Your Engine!**





# Transducers, Pitots and GPS Antenna

*Combined with our Depth Sounders and other electronic instrumentation these transducers and senders offer a wide range of options to fit your needs.*

Catalog	Factory	Description
KTF072	KTF072	Harness - HN0337 - Extension cable for transducers. (22 foot) (Deutsch connector)



**SN2010**  
Adjustable In-hull Transducer

This in-hull transducer has a patented adjustable feature which ensures that sound waves are transmitted vertically to the bottom on almost any hull with a dead rise up to 22°. With no hull penetration, installation is easy and high speed performance is maximized.



**SN2011**  
Transom Mounted Depth Transducer

With a low profile this depth unit offers little drag and easy installation for dead rise angles up to 30°. Designed with a release bracket to protect against impact damage. This unit provides good high speed operations up to 55 knots.



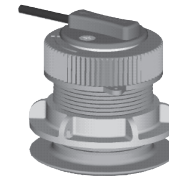
**SN2060**  
Thru-hull Transducer

1 5/8" thru hull depth transducer. (Requires 1 5/8" hole in vessel.)



**SN0007 -**  
Transom Mounted Non-Clogging Speed Sender

Transom mounted, the paddle wheel and housing do not project beyond the hull allowing for minimal drag and spray. Unlike pilot tubes this speed sensor will not be damaged by beaching or other impact. This sensor comes with an adjustable bracket allowing mounting to a 3° to 16° angled Transom.



**SN0015**  
Thru-hull Flush Mounted Temperature and Speed Sender

Perfect for water sports which require continuous accurate speed measurements like water-skiing, where boat angles can sometimes interrupt transom mounted senders. The thru-hull flush mounted temperature and speed sender offer virtually no drag. Easy installation and accuracy makes this sender the perfect choice for water sports. (Requires 1 5/8" hole in vessel.)



**Pitot Tubes Assembly Kits**

Complete transom mount speedometer pick-up with escutcheon plate and mounting hardware (two choices of tubing length) for use with all marine speedometers.

Catalog	Factory	Description
91109	KS9007	PITOT KIT (Universal)
91106	KS9003	PITOT KIT (Universal) (20 ft. tubing)
91105	CG0001	PITOT KIT (Escutcheon cover plate for pitot tubing)



**KTF067**  
External NMEA 0183 GPS Antenna

The new GPS antenna from Faria Beede is small in size but packs a lot inside. The Faria Beede GPS antenna uses a highly accurate 48 channel GPS receiver.

Designed to connect directly into the NMEA0183 harness. Use the new GPS antenna wherever you would use the current GPS antennas. Ultra fast Satellite acquisition times (TTFF), with Speed Accuracy of +/- 1 MPH. Works better than the traditional GPS antennas at just a fraction of the size.

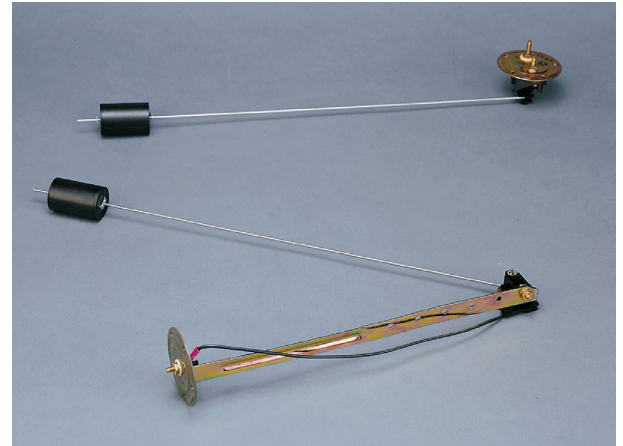
## Accessories - Senders

### Fuel Level Senders

SAE 5 hole flange, adjustable for left or right arm movements and various tank depths. Includes gasket and screws and 2 #10 stud terminals.

Sealing gasket and mounting hardware required.

Catalog	Factory	Description
91001	LS6025	SENDER (Fuel Level) (American 8-16 inch) (Single)
91003	LS6026	SENDER (Fuel Level) (American 14-24 inch) (Single)
91005	LS6028	SENDER (Fuel Level) (European 20-40 cm) (Single)
91007	LS6027	SENDER (Fuel Level) (European 36-60 cm) (Single)
91017	PL1040	SENDER (FUEL LEVEL INSTALLATION KIT)



(For Tanks 6 to 25" deep)

### Temperature Senders

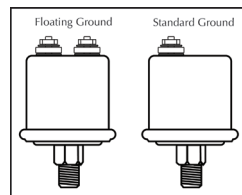
- 1/8" NPTF
- A wide variety of sender types
- Metric and Standard values available

Catalog	Factory	Description
90401	TS1029	SENDER (Temperature) (1/8) (American Single Standard)
90402	TS2035	SENDER (Temperature) (1/4) (American Single Standard)
90403	TS3044	SENDER (Temperature) (3/8) (American Single Standard)
90404	TS4042	SENDER (Temperature) (1/2) (American Single Standard)
90410	TS1055	SENDER (Temperature) (1/8) (American Single Float)
90406	TS1056	SENDER (Temperature) (1/8) (American Dual Standard)
90412	TS1058	SENDER (Temperature) (1/8) (European Single Standard)
90413	TS1059	SENDER (Temperature) (1/8) (European Single Float)
90405	TS5026	SENDER (Cylinder Head Temperature)

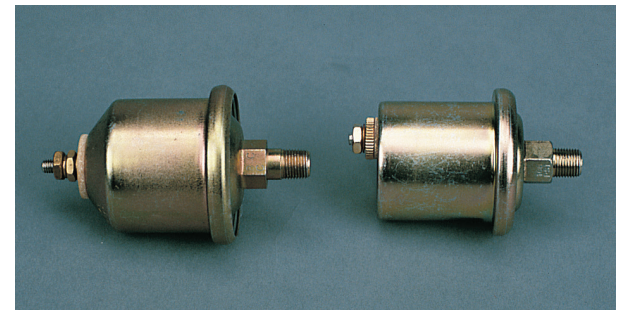


### Pressure Senders

- 1/8" NPTF
- A wide variety of sender types
- Metric and Standard values available



Catalog	Factory	Description
90512	SD0003	SENDER (Oil Pressure) (1/8 NPTF American 80 PSI) (Single Standard)
90513	SD0024	SENDER (Oil Pressure) (1/8 NPTF American 80 PSI) (Single Float)
90511	SD0025	SENDER (Oil Pressure) (1/8 NPTF American 80 PSI) (Dual Standard)
90516	SD0031	SENDER (Oil Pressure) (1/8 NPTF European 5 BAR) (Single Float)
90517	SD0032	SENDER (Oil Pressure) (1/8 NPTF European 5 BAR) (Dual Standard)
90519	SD0006	SENDER (Oil Pressure) (1/8 NPTF American 100 PSI) (Single Standard)
90526	SD0035	SENDER (Oil Pressure) (1/8 NPTF European 10 BAR) (Single Standard)
90527	SD0036	SENDER (Oil Pressure) (1/8 NPTF European 10 BAR) (Single Float)



### Other Senders

Catalog	Factory	Description
90530	SD0041	SENDER (Rudder Angle) (Single station) (Standard or Floating ground)
90531	SD0039	SENDER (Rudder Angle) (Dual station) (Standard or Floating ground)
90901	DK9005	SENDER (Tachometer) (Diesel) (Mechanical takeoff)



# Specifications

Our instruments are manufactured by Faria Beede Instruments., Inc. in Uncasville Connecticut, USA. Each instrument has been manufactured in an ISO:9001 2008 registered facility, built to stringent standards and has passed a comprehensive quality control procedure prior to shipment. Each instrument is backed by the Faria Beede Limited Warranty.

## 4" & 5" Electronic Instruments

Operating Temperature	-4 °F to +158 ° F (-20 ° C to +70 ° C)
Storage Temperature	-22 ° F to +185 ° F (-30 ° C to +85 ° C)
Lighting	See product line for specific information
Operating Voltage	11.5 to 16 volts
Nominal Voltage	14.2 volts
Current Consumption	< 100 mA, without illumination
Bezel	Stainless Steel or Aluminum - see product line for specific information
Lens	Glass or Poly carbonate - see product line for specific information
Connection	Studs, blade terminals, connectors - see product line for specific information
Mounting Bracket	Plastic mounting clamp. Clamping range 0 -.8" (0-20 mm)
Torque	5 to 7 inch pounds (.57 - .80 Nm)
Mounting Hole	3 3/8" (85 mm) for 4" Instrument – 4 3/8" (112 mm) for 5" Instrument

## 4" & 5" Mechanical Instruments

Operating Temperature	-22 ° F to +185 ° F (-30 ° C to +85 ° C)
Storage Temperature	-40 ° F to +221 ° F (-40 ° C to +105 ° C)
Lighting	See product line for specific information
Bezel	Stainless Steel or Aluminum - see product line for specific information
Lens	Glass or Poly carbonate - see product line for specific information
Connection	Studs, blade terminals - see product line for specific information
Mounting Bracket	Plastic mounting clamp. Clamping range 0 -.8" (0-20 mm)
Torque	5 to 7 inch pounds (.57 - .80 Nm)
Mounting Hole	3 3/8" (85 mm) for 4" Instrument – 4 3/8" (112 mm) for 5" Instrument

## 2" Electronic Instruments

Operating Temperature	-4 ° F to +158 °F (-20 ° C to +70 ° C)
Storage Temperature	-22 ° F to +185 °F (-30 ° C to +85 ° C)
Lighting	See product line for specific information
Operating Voltage	11.5 to 16 volts
Nominal Voltage	14.2 volts
Current Consumption	< 100 mA, without illumination
Bezel	Stainless Steel or Aluminum - see product line for specific information
Lens	Glass or Poly carbonate - see product line for specific information
Connection	Studs, blade terminals, connectors - see product line for specific information
Mounting Bracket	Plastic mounting clamp. Clamping range 0 -.8" (0-20 mm)
Torque	5 to 7 inch pounds (.57 - .80 Nm)
Mounting Hole	2 1/16" (53 mm) for 2" Instrument

## 2" Mechanical Instruments

Operating Temperature	-22 ° F to +185 °F (-30 ° C to +85 ° C)
Storage Temperature	-40 ° F to +221 °F (-40 ° C to +105 ° C)
Lighting	See product line for specific information
Bezel	Stainless Steel or Aluminum - see product line for specific information
Lens	Glass or Poly carbonate - see product line for specific information
Connection	Studs, blade terminals - see product line for specific information
Mounting Bracket	Plastic clamp, metal on water pressure. Clamping range 0 -.8" (0-20 mm)
Torque	5 to 7 inch pounds (.57 - .80 Nm)
Mounting Hole	2 1/16" (53 mm) for 2" Instrument



Made in the USA

Manufactured by the Faria Beede Instruments, Inc. , Uncasville CT, USA • Copyright and all other rights reserved.  
Our products are continually being improved. Specifications may change without notice.



**Faria Beede Instruments, Inc.**  
P. O. Box 983  
Uncasville, CT 06382  
860.848.9271  
Fax: 860.848.2704

fm-002-0001 rev L 160707