



**RUGGED. REMOTE. RELIABLE.**

Satellite Asset Monitoring Solutions

## WORKER PROTECTION

### 600 LW

**A rugged, compact, internally powered Iridium Satellite, GPS Tracking, Intrinsically Safe Man Down Personal Safety System**

How do you protect your workers in remote locations? Give your employees peace of mind with a communication link through the EntelNet 600 LW Intrinsically Safe Man Down Personal Safety System.

The EntelNet 600 LW houses the EntelNet Telematics GPS/Iridium Satellite Tracking and Monitoring systems, the Grace MX900 transceiver & an internal battery all in a rugged IP-66 enclosure and communicates with the Grace Personnel Safety device.

#### Key Features / Benefits:

- The system has strong magnets that when applied to a ferrous surface, like the roof of a vehicle, activates automatically for fast and easy deployment.
- If/when the EntelNet 600 LW is removed from the steel surface or mounting pads (for use/transfer to ATV's, Snowmobiles or other equipment) a tamper message is



sent and the unit will switch itself off, and sends a Power Off message. (Manual switch also available.)

- The system reports the GPS location, speed and direction of travel of the vehicle it is mounted on in predefined time intervals through the Iridium SBD Satellite Network and is presented on a web based application.
- Report time intervals are controlled by an integrated motion sensor. This sensor distinguishes in-motion and at-rest conditions. The at-rest frequency is lowered in order to minimize communication cost and maximize battery life. Reporting frequency and other settings can be changed OTA (Over-The-Air). The system's internal battery supports position information and communication/alerts with the EntelNet-600SP Grace® Personnel Safety device for 12 hours at 15 minute updates.

#### Dimensions and Weight

L: 13.78" (350mm)  
W: 3.94" (100mm)  
H: 1.97" (50mm)  
3 lbs. (1430 gr.)

#### Specifications

Operating Temperature – 35C to +65C  
Storage Temperature –35C to +25C  
Water and Weather Resistance IP66  
Power Consumption 60uA  
Magnet Holding Force 1080N (~238 pounds (108 kg))



## The Personal Safety device

The worker worn device (EntelNet 600 SP) protects the lone worker by communicating an emergency message with the worker's GPS position real-time over the Iridium satellite network. This device also provides for two-way text messaging and is certified Intrinsically Safe for use in hazardous environments.

Alarm  
Button



## What happens in an emergency?

With a press of the single large button on the Safety Device the worker sends an alarm notification. This single button press is designed for simplicity and ease of use. No worker wants to be fumbling with multiple buttons sequences, small keypads or latch during a life threatening emergency and/or when wearing gloves.

## What if a worker is unable to press the button?

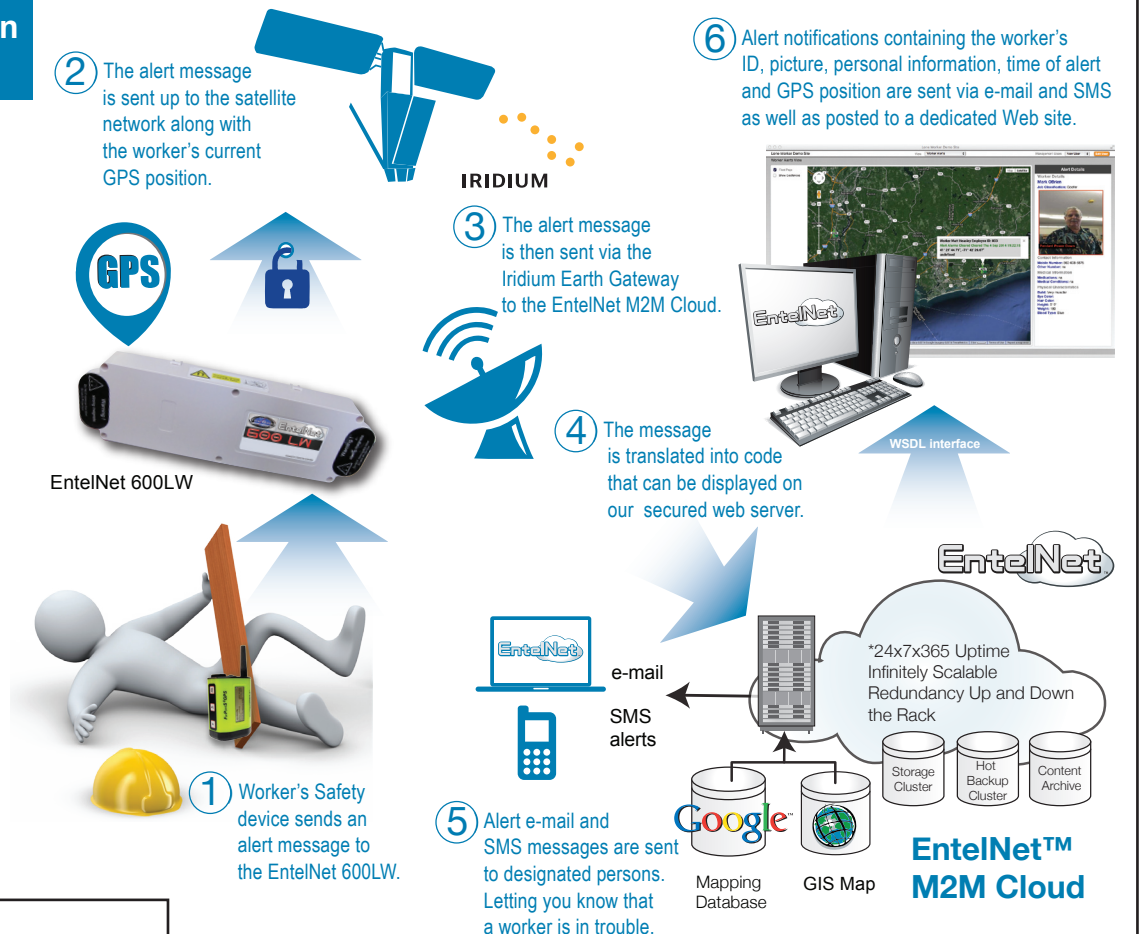


The integrated motion sensor prompts an alert notification when the worker's safety system is motionless after 60 seconds (user can select dwell time.) From the moment of no motion up until the 30 second mark, the safety device will sound a series of increasing beep alerts and also display an alert message in the LCD display to warn the worker. This allows the worker ample time to resume device motion or reset should there be no emergency.

## How are alert notification communicated?

When an alert is activated on the worker's Safety Device it sends a message to the EntelNet 600 LW system installed in or on the vehicle, guard shack, ATV, etc. The EntelNet Telematics system then uplinks the emergency message via the Iridium® satellite network, to ensure real-time notifications anywhere on earth.

Alert notifications are displayed on a dedicated website and sends e-mail and SMS alerts to designated recipients with the Worker's ID, picture, personal information, time of alert and their GPS position.



For more information contact



Tel: 860.848.6600

Web: [www.FariaBeede.com](http://www.FariaBeede.com)