



# Aftermarket Catalog - 2018



## Meet The Faria Beede Team



### Rugged • Reliable • Innovative

Faria Beede Instruments, Inc. has been manufacturing gauges and instruments in Connecticut for more than 60 years. The company offers a full compliment of analog and digital engine monitoring and telematics solutions for a wide range of global marine, military, industrial and performance industries.

With the recent expansion into the Indiana facilities we have doubled our manufacturing capabilities and improved our state of the art electronic board building capabilities, to make the Faria Beede digital instruments even more reliable then ever before.

One of the few remaining vertically integrated U.S. manufacturers of SAE J1939 instrumentation, Faria Beede provides some of the best turnaround times and responsive support in the industry. This is only possible by having total control of all aspects of design, engineering and manufacturing.

Whether your needs are for the simplest or the more advanced computerized engines, Faria Beede has the instrumentation solution that is right for you.

[www.FariaBeede.com](http://www.FariaBeede.com)



**Made in the USA**



Instruments for

**Automotive**  
**Commercial**  
**Industrial**  
**Performance**  
**Recreational**  
**Marine**  
**Military**



## Featured



Boxed Sets  
(page 3)



GPS Speedometer  
(page 4)



Depth Sounders  
(page 5)

## Classic Styling



Chesapeake Black SS  
(page 7)



Chesapeake White SS  
(page 8)



Coral  
(page 9)



Dress White  
(page 10)



Euro  
(page 11)



Euro White  
(page 12)



Kronos  
(page 13)



Professional Red  
(page 14)



Spun Silver  
(page 14)

## Accessories

Transducers and Senders (page 16)  
Accessories (page 17)  
Specifications (page 18)





Packaged and ready for the display counter.

These Boxed Sets offer a complete set of gauges ready to install.

Available in Chesapeake White Stainless Steel, Chesapeake Black Stainless Steel, Euro, Euro White, Dress White, Spun Silver and Kronos styles.

**The Boxed Sets offer a complete set of gauges ready to install.**

## Standard Boxed Sets

### Featured



Style	Factory	Description	
Euro	KT9799	Inboard Set	6 gauge
Euro	KT9796	Outboard Set	4 gauge
Euro White	KT9798	Inboard Set	6 gauge
Euro White	KT9795	Outboard Set	4 gauge
Dress White	KT9797	Inboard Set	6 gauge
Dress White	KT9794	Outboard Set	4 gauge
Chesapeake SS White	KTF001	Inboard Set	6 gauge
Chesapeake SS White	KTF002	Outboard Set	4 gauge
Chesapeake SS Black	KTF003	Inboard Set	6 gauge
Chesapeake SS Black	KTF004	Outboard Set	4 gauge
Kronos	KTF024	Inboard Set	6 gauge
Spun Silver	KTF0184	Inboard Set	6 gauge

### Boxed Sets with GPS Speedometers

Chesapeake Black SS	KTF064	Inboard Set	6 gauge
Chesapeake White SS	KTF063	Inboard Set	6 gauge



The **Outboard Set** comes complete with Speedometer and Pitot, Tachometer, Fuel gauge and Voltmeter.



The **Inboard Set** comes with Speedometer and Pitot, Tachometer, Fuel gauge, Voltmeter, Water Temp gauge and Oil Pressure gauge.



# GPS Speedometer

## Featured

The GPS Speedometer is a drop-in replacement for your current speedometer.

The GPS **antenna is built-in** to the instruments and does not require an external antenna. **No additional hardware is required.**

The Faria Beede GPS Speedometer uses a highly accurate 48 channel GPS receiver. You can be sure that the GPS Speedometer is giving you the most accurate GPS information available on the market today.

Speed data is shown by an analog pointer. This pointer is driven by a digital stepper motor for increased accuracy and minimized pointer bounce.



## GPS Speedometers

Catalog#	Factory #	Style	Range	Display	Case
33726	SGP004	Ches. Black SS	60 MPH	LCD	
33749	SGP114	Ches. Black SS	60 MPH		Studded
33829	SGP010	Ches. White SS	80 MPH	LCD	
33730	SGP012	Ches. Black SS	80 MPH	LCD	
33826	SGP003	Ches. White SS	60 MPH	LCD	
33839	SGP113	Ches. White SS	60 MPH		Studded
33147	SGP111	Dress White	60 MPH		Studded
32816	SGP110	Euro Black	60 MPH		Studded

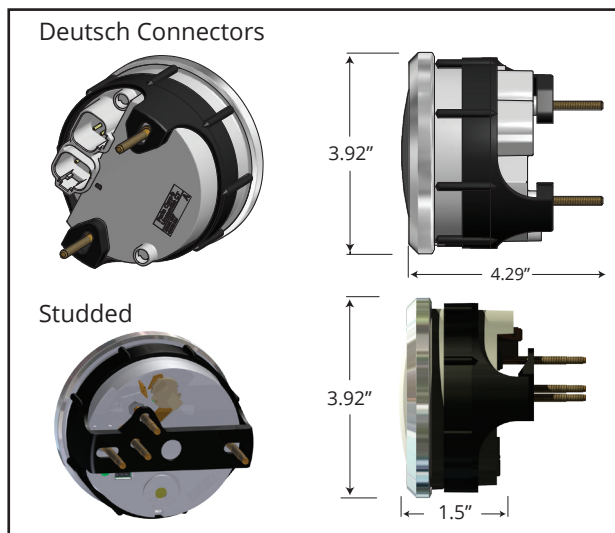


**Antenna built in.**  
No additional parts needed.

## Features & Benefits

- Available in multiple speed ranges in MPH, KPH, and KNOTs
- Premium LED back-lit.
- Available with and without LCD displays showing Compass Rose heading and actual heading (COG)
- Fast satellite acquisition time (TTFF)  
1 second from Hot Start
- Speed accuracy of +/- 1 MPH
- Heading accuracy of +/- 1 degree
- Digital stepper motor driven pointers
- Perfect for slow moving vessels where pitot tubes just don't work
- Ideal replacement for speed sensing devices (pitot tube and paddle wheel) that can fail over time

## Enclosures



### Deutsch connectorized harness

This premium style Speedometer is designed with the very latest technology. It is intended to fit directly into today's dash harnesses with easy Plug and Play connectors. Premium LED lighting and an optional diffused LCD display.

### Studded harness

The studded Speedometer offers an easy way to add GPS technologies to your dash. Designed to fit into existing dash harnesses all ready installed. The Studded Speedometer connects directly to the battery and ground without the addition of a costly connector. Edge lit dials are easy to read in foul weather. Available in the more popular Faria Beede Classic styles.



# Depth Sounders



## Featured

### Depth Sounders

Factory #	Style	Transom	In-Hull	Thru-Hull
DS0101	Euro Black	12850	12851	
S0114	Dress White	13150	13151	
DS0110	Ches. SS White	13850	13851	
DS0111	Ches. SS Black	13750	13751	13795
DS0101	Professional Red	12850	12851	
DS0131	Kronos	19150	19151	

### Dual Temperature Depth Sounders

Factory #	Style	Transom
DS1004	Ches. SS White	13852
DS1002	Ches. SS Black	13752

## Features & Benefits

- Depth range: 1- 61 meters (3 -199 feet)
- Deep and Shallow water alarms
- Programmable keel off-set
- Automatic gain control
- Back lighting for maximum night vision;
- Metric or US standard units
- Easy to install!

Dual Temperature Depth Sounder can display outside air temperatures, baitwell or external water temperatures from 0 °C to 100 °C (32 °F to 200 °F).

**Harnesses and connectors included.**

Fits a standard 2 1/16" (53 mm) gauge mounting hole.

## Accuracy at High Speeds

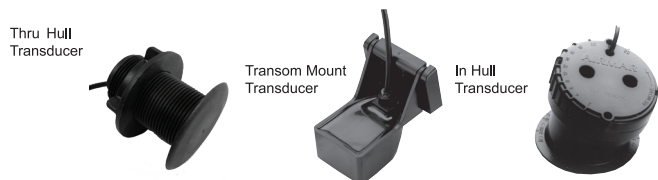
Our Engineers have incorporated the latest microprocessor technology and proprietary software designed to take advantage of today's high performance transducers. As a result this depth sounder outperforms all others on the market in its high speed capabilities and accuracy when faced with various bottom conditions.

The Depth Sounders from Faria offer a 3-199 foot (1-61meters) depth capability, with an automatic gain control, backlighting for maximum night vision, keel offset, and deep and shallow water alarms.

Depth can be read in meters, and feet. With its oversized back-lit display depth can be easily read in any condition. Audible and Visual alarms let the boater know when a shallow or deep water condition exist. A programmable keel offset lets you adjust the offset from the keel at the display.

## Transducers

The Depth Sounder is available with either a Transom, In-Hull or a Thru Hull mounted transducer.

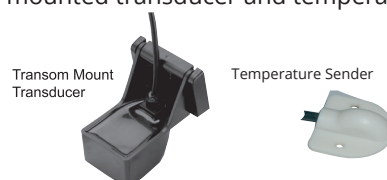


## Dual Temperature Depth Sounder

The dual display of the Dual Temperature Depth Sounder can also show temperature of the water, baitwell or the ambient air temperature all from one 2" gauge.

## Senders and Transducers

The Dual Temperature Depth Sounder comes with a Transom mounted transducer and temperature sender.





## Multifunction Indicators

Dashboards are getting more and more crowded as today's technology explodes on to our boats. Often there are so many beeps and buzzes it's hard to see just what's happening. Of course, you can fill up your dash with lots of little two inch discrete gauges but that too is often just as confusing. That's why Faria Beede developed our multi-function gauge.

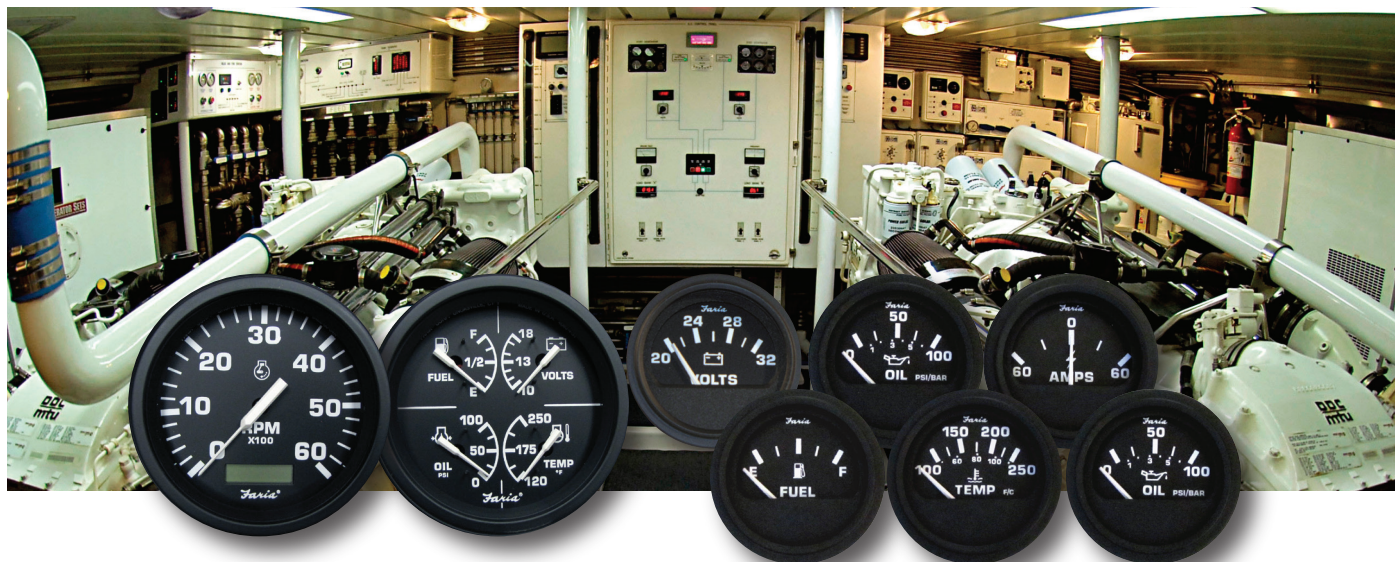
We've combined the most useful discrete gauges into a single instrument and then styled them to match many of our standard styles.

Let us be your solution for dash overload.

Catalog#	Factory #	Size	Style	Description
33751	GF0007	4	Ches. Black SS	Multifunction [Fuel, Oil PSI, Water Temp., Voltmeter]
33851	GF0008	4	Ches. White SS	Multifunction [Fuel, Oil PSI, Water Temp., Voltmeter]
32851	GF0001	4	Euro Black	Multifunction [Fuel, Oil PSI, Water Temp., Voltmeter]



## Heavy Duty Instruments



Heavy Duty instruments are performance proven under the most demanding conditions. Major manufacturers worldwide install Faria Beede instruments as original equipment.

You can rely on our American made products for quality, durability and easy installation.

- Anti-scratch glass lens
- Precision molded plastic cases for corrosion resistance and longevity
- Adaptable to 24 VDC systems (with optional resistor card)
- 12 volt DC negative ground
- Durable, rugged construction

For more information please contact Faria Beede at [sales@FariaBeede.com](mailto:sales@FariaBeede.com) or 860.848.9271



Made in the USA





## Chesapeake Black Stainless Steel

Perimeter-lighted black dial with stylish blue and white graphics, polished stainless steel bezel, contoured white pointer, and domed glass lens.

Catalog	Factory	Size	Description
KTF003	KTF003	<b>Boxed Set</b>	- Inboard (Speedo (60 MPH) (Mech)   Tach (6000 RPM)   Fuel Level   Voltmeter (10-16 VDC)   Water Temp (100-250 F)   Oil PSI (80 PSI)
KTF064	KTF064	<b>Boxed Set</b>	- Inboard (Speedo (60 MPH) (GPS)   Tach (6000 RPM)   Fuel Level   Voltmeter (10-16 VDC)   Water Temp (100-250 F)   Oil PSI (80 PSI)
KTF004	KTF004	<b>Boxed Set</b>	- Outboard (Speedo (60 MPH) (Mech)   Tach (7000 RPM)   Fuel Level   Voltmeter (10-16 VDC)

### Depth Sounders

13752	DS1002	2	Depth Sounder with Air and Water Temperature
13750	DS0111	2	Depth Sounder (Transom Mounted Transducer)
13751	DS0111	2	Depth Sounder (In-Hull Mounted Transducer)
13795	DS0111	2	Depth Sounder (Thru-Hull Transducer) (Requires 1 5/8" hole in vessel.)

### Tachometers

33710	TC9785	4	Tachometer (6000 RPM) (Gas) (Inboard & I/O)
33718	TC9035	4	Tachometer (7000 RPM) (All outboard)
33742	TD9127	4	Tachometer (4000 RPM) (Diesel) (Mechanical takeoff & var ratio alt)
33732	TC9127	4	Tachometer with Hourmeter (6000 RPM) (Gas) (Inboard)
33750	TC9884	4	Tachometer (7000 RPM) with SystemCheck Indicator (Gas) (I/E Outboard)

### GPS Speedometers

33730	SGP012	4	Speedometer (80 MPH) (GPS) (LCD)
33726	SGP004	4	Speedometer (60 MPH) (GPS) (LCD)
33749	SGP114	4	Speedometer (60 MPH) (GPS) (Studded)

### Speedometers

33704	SE9509	4	Speedometer (60 MPH) (Pitot)
-------	--------	---	------------------------------

### Multi-Function Instruments

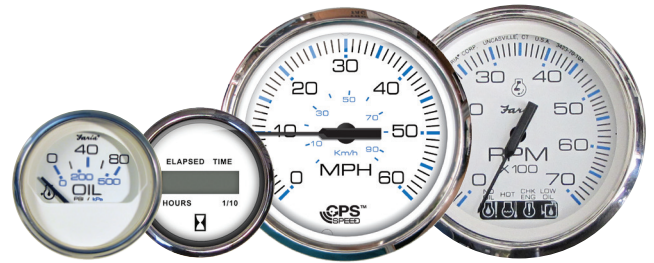
33751	GF0007	4	Multifunction [Fuel Level   Oil PSI (80 PSI)   Water Temp (120-220 F)   Voltmeter (10-18 VDC)]
-------	--------	---	--

### Indicators

13701	GP9368	2	Fuel Level Gauge (E-1/2-F)	13736	AP9530	2	Ammeter (60-0-60)
13721	GP9777	2	Fuel Level Gauge (Metric)	13713	MH0055	2	Hourmeter (10,000 hrs) (12-32 VDC)
13702	GP9640	2	Oil Pressure Gauge (80 PSI)	13715	MH0239	2	Hourmeter [Digital] (12-32 volts)
13712	OP1018	2	Water Pressure Gauge Kit (30 PSI)	13725	GP7377	2	Rudder Angle Indicator
13704	GP9142	2	Water Temperature Gauge (100-250 F)	13705	VP9154	2	Voltmeter (10-16 VDC)
13707	GP9402	2	Trim Gauge (Mercury/Mariner/Mercuriser/Volvo DP/ Yamaha-2001 and newer)				
13709	GP9414	2	Trim Gauge (I/E/Suzuki Outboard)				

# Chesapeake White Stainless Steel

Perimeter-lighted white dial with stylish blue and black graphics, polished stainless steel bezel, contoured black pointer, and domed glass lens.



Catalog	Factory	Size	Description
KTF001	KTF001		<b>Boxed Set</b> - 4" - Inboard (Speedo (60 MPH) (Mech)   Tach (6000 RPM)   Fuel Level   Voltmeter (10-16 VDC)   Water Temp (100-250 F)   Oil PSI (80 PSI)
KTF063	KTF063		<b>Boxed Set</b> - 4" - Inboard (Speedo (60 MPH) (GPS)   Tach (6000 RPM)   Fuel Level   Voltmeter (10-16 VDC)   Water Temp (100-250 F)   Oil PSI (80 PSI)
KTF002	KTF002		<b>Boxed Set</b> - 4" - Outboard (Speedo (60 MPH) (Mech)   Tach (7000 RPM)   Fuel Level   Voltmeter (10-16 VDC)

## Depth Sounders

13852	DS1004	2	Depth Sounder with Air and Water Temperature
13850	DS0110	2	Depth Sounder (Transom Mounted Transducer)
13851	DS0110	2	Depth Sounder (In-Hull Mounted Transducer)

## Tachometers

33807	TC9796	4	Tachometer (6000 RPM) (Gas) (Inboard & I/O)
33817	TC9002	4	Tachometer (7000 RPM) (All outboard)
33842	TD9128	4	Tachometer (4000 RPM) (Diesel) (Mechanical takeoff & var ratio alt)
33818	TD9733	4	Tachometer (4000 RPM) (Diesel) (Mag Pick-Up)
33832	TC9128	4	Tachometer with Hourmeter (6000 RPM) (Gas) (Inboard)
33840	TCH008	4	Tachometer w/ Hourmeter (7000 RPM) (Gas)(Outboard)
33834	TD9108	4	Tachometer with Hourmeter (4000 RPM) (Diesel) (Mech takeoff & var ratio alt)
33850	TC9881	4	Tachometer (7000 RPM) with SystemCheck Indicator (Gas) (I/E Outboard)

## Speedometers

33811	SE9521	4	Speedometer (60 MPH) (Pitot)
33819	SE9522	4	Speedometer (80 MPH) (Pitot)

## GPS Speedometers

33829	SGP010	4	Speedometer (80 MPH) (GPS)
33826	SGP003	4	Speedometer (60 MPH) (GPS)
33839	SGP113	4	Speedometer (60 MPH) (GPS) (Studded)

## Multi-Function Instruments

33801	SY9629	4	Synchronizer (Dual Engine) Gas and Variable Ratio / Alternator type diesels only.
33851	GF0008	4	Multifunction [Fuel Level   Oil PSI (80 PSI)   Water Temp (120-220 F)   Voltmeter (10-18 VDC)]

## Indicators

13801	GP9373	2	Fuel Level Gauge (E-1/2-F)	13889	GP7440	2	Trim Gauge (Honda)
13818	GP9791	2	Fuel Level Gauge (Metric)	13807	GP9649	2	Trim Gauge (Mercury/Mariner/Mercruiser/Volvo DP/ Yamaha-2001 and newer)
13802	GP9647	2	Oil Pressure Gauge (80 PSI)	13809	GP9418	2	Trim Gauge (I/E/Suzuki Outboard)
13812	OP1022	2	Water Pressure Gauge Kit (30 PSI)	13808	GP9734	2	Trim Gauge (OMC Cobra/Volvo SX)
13806	GP9454	2	Cylinder Head Temperature (60 - 220 F) with sender	13822	GP7378	2	Rudder Angle Indicator
13804	GP9146	2	Water Temperature Gauge (100-250 F)	13813	MH0059	2	Hourmeter (10,000 hrs) (12-32 VDC)
13828	GP9178	2	Water Temperature Gauge (40-120 C) (Metric)	13815	MH0211	2	Hourmeter [Digital] (12-32 volts)
13891	CL1026	2	Clock (Quartz) (Analog)	13805	VP9158	2	Voltmeter (10-16 VDC)





## Coral

Perimeter-lighted black dial with stylish white and blue graphics, black aluminum bezel with burnished leading edge, contoured white pointer, and flat glass lens.

Catalog	Factory	Size	Description				
Tachometers							
33004	TC9493	4	Tachometer (6000 RPM) (Gas) (Inboard & I/O)				
33005	TC9036	4	Tachometer (7000 RPM) (All outboard)				
Speedometers							
33009	SE9216	4	Speedometer (55 MPH) (Pitot)				
Indicators							
13001	GP9346	2	Fuel Level Gauge (E-1/2-F)	13017	GP9348	2	Trim Gauge (Mercury/Mariner/Mercruiser/Volvo DP/ Yamaha-2001 and newer)
13020	GP9390	2	Fuel Level Gauge (Metric)				
13002	GP9527	2	Oil Pressure Gauge (80 PSI)	13016	GP9273	2	Trim Gauge (J/E/Suzuki Outboard)
13003	OP1000	2	Water Pressure Gauge Kit (30 PSI)	13012	VP7903	2	Battery Condition Indicator (12 VDC)
13009	GP9405	2	Cylinder Head Temperature (60 - 220 F) with sender	13013	MH0010	2	Hourmeter (10,000 hrs) (12-32 VDC)
13004	GP9461	2	Water Temperature Gauge (100-250 F)	13010	VP9106	2	Voltmeter (10-16 VDC)



The choice of the world's leading boat manufacturers since 1957.

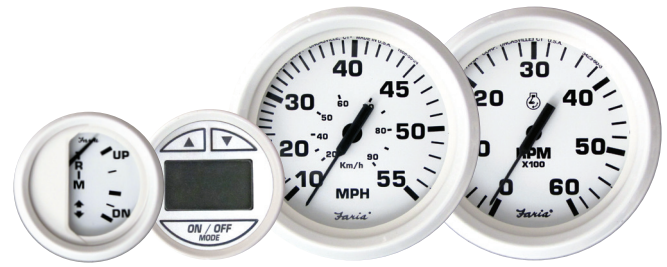
*All of our instruments are performance proven under the most demanding conditions. They are factory installed original equipment with major manufacturers worldwide. You can rely on Faria Beede Instruments, Inc. for world class quality, dependability and ease of installation.*

*Contact Faria Beede for OEM gauge replacements. Many of the OEM styles can still be purchased through our Marine distributors. Before you contact us, have a picture of the gauge and the part number readily available. This helps us to identify the gauge, so that we can assist you better.*



# Dress White

Perimeter-lighted white dial with bold black graphics, white aluminum bezel, contoured black pointer, and flat glass lens.



Catalog	Factory	Size	Description				
KT9797	KT9797		<b>Boxed Set</b> - Inboard (Speedo (55 MPH) (Mech)   Tach (6000 RPM)   Fuel Level   Voltmeter (10-16 VDC)   Water Temp (100-250 F)   Oil PSI (80 PSI)				
KT9794	KT9794		<b>Boxed Set</b> - Outboard (Speedo (55 MPH) (Mech)   Tach (7000 RPM)   Fuel Level   Voltmeter (10-16 VDC)				
Depth Sounders							
13150	DS0114	2	Depth Sounder (Transom Mounted Transducer)				
13151	DS0114	2	Depth Sounder (In-Hull Mounted Transducer)				
Tachometers							
33103	TC9691	4	Tachometer (6000 RPM) (Gas) (Inboard & I/O)				
33104	TC9038	4	Tachometer (7000 RPM) (All outboard)				
33132	TC9124	4	Tachometer with Hourmeter (6000 RPM) (Gas) (Inboard)				
33140	TCH013	4	Tachometer with Hourmeter (7000 RPM) (Gas) (Outboard)				
33150	TC9887	4	Tachometer (7000 RPM) with SystemCheck Indicator (Gas) (I/E Outboard)				
GPS Speedometers							
33147	SGP111	4	Speedometer (60 MPH) (GPS) (Studded)				
Speedometers							
33112	SE9475	4	Speedometer (55 MPH) (Pitot)				
33113	SE9476	4	Speedometer (80 MPH) (Pitot)				
Multi-Function Instruments							
33105	SY9618	4	Synchronizer (Dual Engine) Gas and Variable Ratio / Alternator type diesels only.				
Indicators							
13101	GP9389	2	Fuel Level Gauge (E-1/2-F)	13122	GP9712	2	Trim Gauge (Mercury/Mariner/Mercruiser/Volvo DP/ Yamaha-2001 and newer)
13117	GP9722	2	Fuel Level Gauge (Metric)				
13102	GP9573	2	Oil Pressure Gauge (80 PSI)	13123	GP9711	2	Trim Gauge (I/E/Suzuki Outboard)
13108	OP1006	2	Water Pressure Gauge Kit (30 PSI)	13121	MH0036	2	Hourmeter (10,000 hrs) (12-32 VDC)
13113	GP9444	2	Cylinder Head Temperature (60 - 220 F) with sender	13130	MH0240	2	Hourmeter [Digital] (12-32 volts)
13110	GP9120	2	Water Temperature Gauge (100-250 F)	13120	VP9139	2	Voltmeter (10-16 VDC)





## Euro

Perimeter-lighted black dial with bold white graphics, black aluminum bezel, contoured white pointer, and flat glass lens.

Catalog	Factory	Size	Description
KT9799	KT9799	<b>Boxed Set</b>	- 4" - Inboard (Speedo (55 MPH) (Mech)   Tach (6000 RPM)   Fuel Level   Voltmeter (10-16 VDC)   Water Temp (100-250 F)   Oil PSI (80 PSI)
KT9796	KT9796	<b>Boxed Set</b>	- 4" Outboard (Speedo (55 MPH) (Mech)   Tach (7000 RPM)   Fuel Level   Voltmeter (10-16 VDC)

### Depth Sounders

12850	DS0101	2	Depth Sounder (Transom Mounted Transducer)
12851	DS0101	2	Depth Sounder (In-Hull Mounted Transducer)

### Tachometers

32804	TC9643	4	Tachometer (6000 RPM) (Gas) (Inboard & I/O)
32805	TC9011	4	Tachometer (7000 RPM) (All outboard)
32842	TD9122	4	Tachometer (4000 RPM) (Diesel) (Mechanical takeoff & var ratio alt)
32803	TD9671	4	Tachometer (4000 RPM) (Diesel) (Mag Pick-Up)
32832	TC9122	4	Tachometer with Hourmeter (6000 RPM) (Gas) (Inboard)
32840	TCH015	4	Tachometer w/ Hourmeter (7000 RPM) (Gas) (Outboard)
32834	TD9102	4	Tachometer with Hourmeter (4000 RPM) (Diesel) (Mech takeoff & var ratio alt)
32850	TC9951	4	Tachometer (7000 RPM) with SystemCheck Indicator (Gas) (J/E Outboard)

### Speedometers

32810	SE9463	4	Speedometer (55 MPH) (Mechanical)
32812	SE9460	4	Speedometer (80 MPH) (Mechanical)

### GPS Speedometers

32816	SGP110	4	Speedometer (60 MPH) (GPS) (Studded)
-------	--------	---	--------------------------------------

### Multi-Function Instruments

32851	GF0001	4	Multifunction [Fuel Level   Oil PSI (80 PSI)   Water Temp (100-250 F)   Voltmeter (10-16 VDC)]
-------	--------	---	--

### Indicators

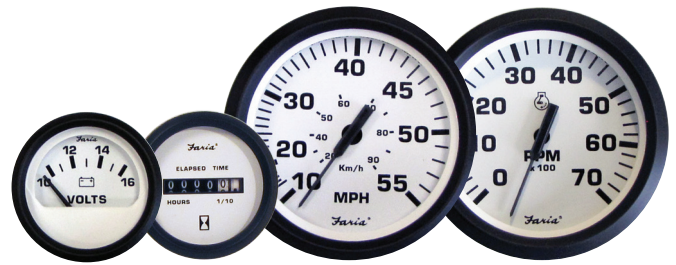
12801	GP9357	2	Fuel Level Gauge (E-1/2-F)
12802	GP9322	2	Fuel Level Gauge (Metric)
12830	GP9324	2	Tank Level Gauge (Potable water)
12831	GP9326	2	Tank Level Gauge (Potable water) (Metric)
12803	GP9599	2	Oil Pressure Gauge (80 PSI)
12845	GP9597	2	Oil Pressure Gauge (100 PSI)
12805	GP9511	2	Oil Pressure Gauge (5 BAR) (Metric)
12810	OP1004	2	Water Pressure Gauge Kit (30 PSI)
12875	OP1014	2	Water Pressure Gauge Kit (60 PSI)
12819	GP9438	2	Cylinder Head Temperature (60 - 220 F) with sender
12812	GP9118	2	Water Temperature Gauge (100-250 F)
12814	GP9124	2	Water Temperature Gauge (40-120 C) (Metric)
12828	GP9374	2	Trim Gauge (Mercury/Mariner/Mercruiser/Volvo DP/ Yamaha-2001 and newer)
12827	GP9305	2	Trim Gauge (J/E/Suzuki Outboard)
12822	AP9523	2	Ammeter (60-0-60)
12823	VP7901	2	Battery Condition Indicator (12 VDC)
12825	CL1008	2	Clock (Quartz) (Analog)
12824	MH0009	2	Hourmeter (10,000 hrs) (12-32 VDC)
12835	MH0232	2	Hourmeter [Digital] (12-32 volts)
12833	GP7373	2	Rudder Angle Indicator
12821	VP9134	2	Voltmeter (10-16 VDC)
12860	VP9191	2	Voltmeter (20-32 VDC)

### Blank Gauges

32861	TC9640	4	Blank gauge fill
12861	AP9475	2	Blank gauge fill

# Euro White

Perimeter-lighted white dial with bold black graphics, black aluminum bezel, contoured white pointer, and flat glass lens.



Catalog	Factory	Size	Description
KT9798	KT9798		<b>Boxed Set</b> Inboard (Speedo (55 MPH) (Mech)   Tach (6000 RPM)   Fuel Level   Voltmeter (10-16 VDC)   Water Temp (100-250 F)   Oil PSI (80 PSI)
KT9795	KT9795		<b>Boxed Set</b> Outboard (Speedo (55 MPH) (Mech)   Tach (7000 RPM)   Fuel Level   Voltmeter (10-16 VDC)

## Tachometers

32904	TC9679	4	Tachometer (6000 RPM) (Gas) (Inboard & I/O)
32905	TC9003	4	Tachometer (7000 RPM) (All outboard)
32942	TD9123	4	Tachometer (4000 RPM) (Diesel) (Mechanical takeoff & var ratio alt)
32950	TC9886	4	Tachometer (7000 RPM) with SystemCheck Indicator (Gas) (J/E Outboard)

## Speedometers

32909	SE9473	4	Speedometer (55 MPH) (Pitot)
-------	--------	---	------------------------------

## Multi-Function Instruments

32951	GF0002	4	Multifunction [Fuel Level   Oil PSI (80 PSI)   Water Temp (100-250 F)   Voltmeter (10-16 VDC)]
-------	--------	---	--

## Indicators

12901	GP9358	2	Fuel Level Gauge (E-1/2-F)	12916	GP9709	2	Trim Gauge (Mercury/Mariner/Mercruiser/Volvo DP/ Yamaha-2001 and newer)
12902	GP9596	2	Oil Pressure Gauge (80 PSI)	12915	GP9708	2	Trim Gauge (J/E/Suzuki Outboard)
12903	OP1005	2	Water Pressure Gauge Kit (30 PSI)	12913	MH0017	2	Hourmeter (10,000 hrs) (12-32 VDC)
12910	GP9439	2	Cylinder Head Temperature (60 - 220 F) with sender	12911	VP9136	2	Voltmeter (10-16 VDC)
12904	GP9119	2	Water Temperature Gauge (100-250 F)				





## Kronos

*Polished Stainless Steel Bezel, Flat Glass Lens, Perimeter Lighted Spun Aluminum dial with Gold and Black graphics. Gold increments and Logo on dial are Embossed. All instruments include two piece Newport Pointer with White Hub.*

Catalog	Factory	Size	Description					
KTF024	KTF024		<b>Boxed Set</b> Inboard (Speedo (60 MPH) (Mech)   Tach (6000 RPM)   Fuel Level   Voltmeter (10-16 VDC)   Water Temp (100-250 F)   Oil PSI (80 PSI)					
<b>Depth Sounders</b>								
19151	DS0131	2	Depth Sounder (In-Hull Mounted Transducer)					
<b>Tachometers</b>								
39004	TC9983	4	Tachometer (6000 RPM) (Gas) (Inboard & I/O)					
39005	TC9252	4	Tachometer (7000 RPM) (All outboard)					
39040	TCH305	4	Tachometer with Hourmeter (7000 RPM) (Gas) (Outboard)					
<b>Speedometers</b>								
39009	SE9945	4	Speedometer (60 MPH) (Mechanical)					
<b>Indicators</b>								
19001	GP7683	2	Fuel Level Gauge (E-1/2-F)		19005	GP7681	2	Trim Gauge (Mercury/Mariner/Mercruiser/Volvo DP/ Yamaha-2001 and newer)
19002	GP7684	2	Oil Pressure Gauge (80 PSI)					
19007	OP1171	2	Water Pressure Gauge Kit (30 PSI)		19020	MH0144	2	Hourmeter (10,000 hrs) (12-32 VDC)
19003	GP7682	2	Water Temperature Gauge (100-250 F)		19004	VP7102	2	Voltmeter (10-16 VDC)



## Professional Red

Perimeter-lighted black dial with stylish red and white graphics, black aluminum bezel, tear-drop white pointer, and flat glass lens.



Catalog	Factory	Size	Description					
12850	DS0101	2	Depth Sounder (Transom Mounted Transducer)					
12851	DS0101	2	Depth Sounder (In-Hull Mounted Transducer)					
Tachometers								
34607	TC9933	4	Tachometer (6000 RPM) (Gas) (Inboard & I/O)					
34617	TC9026	4	Tachometer (7000 RPM) (All outboard)					
34650	TC9934	4	Tachometer (7000 RPM) with SystemCheck Indicator (Gas) (I/E Outboard)					
Indicators								
14601	GP7282	2	Fuel Level Gauge (E-1/2-F)		14607	GP7422	2	Trim Gauge (Mercury/Mariner/Mercruiser/Volvo DP/ Yamaha-2001 and newer)
14602	GP7063	2	Oil Pressure Gauge (80 PSI)					
14612	OP1057	2	Water Pressure Gauge Kit (30 PSI)		14613	MH0096	2	Hourmeter (10,000 hrs) (12-32 VDC)
14604	GP7166	2	Water Temperature Gauge (100-250 F)		14605	VP7042	2	Voltmeter (10-16 VDC)

## Spun Silver

Perimeter-lighted silver dial with bold black graphics, polished stainless steel bezel, contoured black pointer, and domed glass lens.



Catalog	Factory	Size	Description						
KTF0184	KTF0184		<b>Boxed Set:</b> Inboard (Speedo (65 MPH) (Mech)   Tach (7000 RPM)   Fuel Level   Voltmeter (10-16 VDC)   Water Temp (100-250 F)   Oil PSI (80 PSI)						
<b>Tachometers</b>									
36004	TC9476	4	Tachometer (6000 RPM) (Gas) (Inboard & I/O)						
36005	TC9004	4	Tachometer (7000 RPM) (All outboard)						
36032	TC9196	4	Tachometer with Hourmeter (6000 RPM) (Gas) (Inboard)						
<b>Indicators</b>									
16001	GP9932	2	Fuel Level Gauge (E-1/2-F)			16020	MH0114	2	Hourmeter (10,000 hrs) (12-32 VDC)
16004	GP9428	2	Water Temperature Gauge (100-250 F)			16023	VP9223	2	Voltmeter (10-16 VDC)
16016	GP9223	2	Trim Gauge (Mercury/Mariner/Mercruiser/ Volvo DP/ Yamaha-2001 and newer)						





*Repair costs can get expensive.*

## **Restore • Replace • Rebuild • Repower**

*with Boxed Sets from Faria Beede. A cost effective OEM gauge replacement option.*



Boxed Sets offer a complete set of instruments and everything you need to replace your old OEM installed instruments.

With many styles to choose from, Faria Beede has the look you want and savings that is easy on the budget.

When upgrading your engine don't forget about your instruments.

Faria Beede has an easy plug and play instrument replacement set that works with your new engine.

### ***Faria Beede Limited Warranty***

During the initial warranty period of 36 months from date of original retail purchase (12 months on fog resistant lens, Depth Sounder, MG1000 and MG3000 and 24 months on Senders, Transducers, Triducers and Smartducers), any instrument(s) that fails due to defects in materials or workmanship will be repaired or replaced at Faria Beede Instruments' option at no charge.

Once beyond the initial warranty period repair fees apply.

For more information go to  
***warranty.fariabeede.com***

# Transducers, Pitots

***Combined with our Depth Sounders and other electronic instrumentation these transducers and senders offer a wide range of options to fit your needs.***



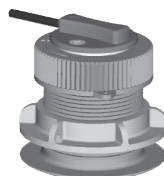
**SN2010**  
**Adjustable In-hull Transducer**

This in-hull transducer has a patented adjustable feature which ensures that sound waves are transmitted vertically to the bottom on almost any hull with a dead rise up to 22°. With no hull penetration, installation is easy and high speed performance is maximized.



**SN2011**  
**Transom Mounted Depth Transducer**

With a low profile this depth unit offers little drag and easy installation for dead rise angles up to 30°. Designed with a release bracket to protect against impact damage. This unit provides good high speed operations up to 55 knots.



**SN0015**  
**Thru-hull Flush Mounted Temperature and Speed Sender**

Perfect for water sports which require continuous accurate speed measurements like water-skiing, where boat angles can sometimes interrupt transom mounted senders. The thru-hull flush mounted temperature and speed sender offer virtually no drag. Easy installation and accuracy makes this sender the perfect choice for water sports. (Requires 1 5/8" hole in vessel.)



**SN2031**  
**Retactable Triducer Thru-Hull Transducer**  
Depth / Paddle Wheel Speed / Temperature Sensor  
1 5/8" thru hull depth transducer.  
(Requires 1 5/8" hole in vessel.)



**SN2060**  
**Thru-hull Transducer**  
1 5/8" thru hull depth transducer.  
(Requires 1 5/8" hole in vessel.)



**Pitot Tubes Assembly Kits**  
Complete transom mount speedometer pick-up with escutcheon plate and mounting hardware (two choices of tubing length) for use with all marine speedometers.

Catalog	Factory	Description
91109	KS9007	PITOT KIT (Universal)
91106	KS9003	PITOT KIT (Universal) (20 ft. tubing)
91105	CG0001	PITOT KIT (Escutcheon cover plate for pitot tubing)



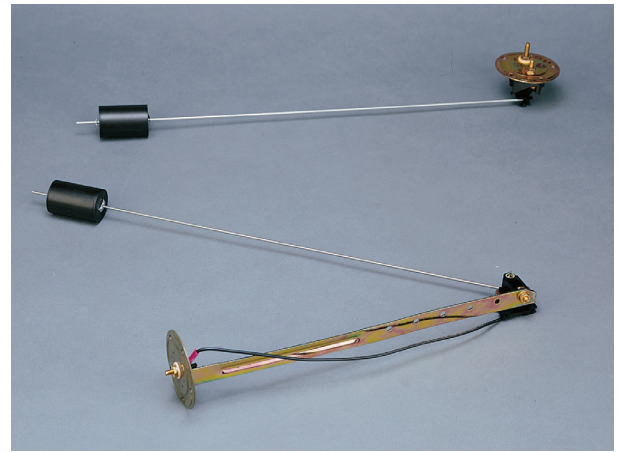
# Accessories - Senders

## Fuel Level Senders

SAE 5 hole flange, adjustable for left or right arm movements and various tank depths. Includes gasket and screws and 2 #10 stud terminals.

Sealing gasket and mounting hardware required.

Catalog	Factory	Description
91001	LS6025	SENDER (Fuel Level) (American 8-16 inch) (Single)
91003	LS6026	SENDER (Fuel Level) (American 14-24 inch) (Single)
91005	LS6028	SENDER (Fuel Level) (European 20-40 cm) (Single)



(For Tanks 6 to 25" deep)

## Temperature Senders

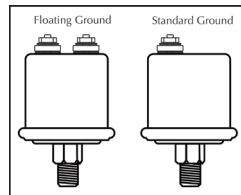
- 1/8" NPTF
- A wide variety of sender types
- Metric and Standard values available

Catalog	Factory	Description
90401	TS1029	SENDER (Temperature) (1/8) (American Single Standard)
90402	TS2035	SENDER (Temperature) (1/4) (American Single Standard)
90403	TS3044	SENDER (Temperature) (3/8) (American Single Standard)
90404	TS4042	SENDER (Temperature) (1/2) (American Single Standard)
90406	TS1056	SENDER (Temperature) (1/8) (American Dual Standard)
90412	TS1058	SENDER (Temperature) (1/8) (European Single Standard)
90405	TS5026	SENDER (Cylinder Head Temperature)

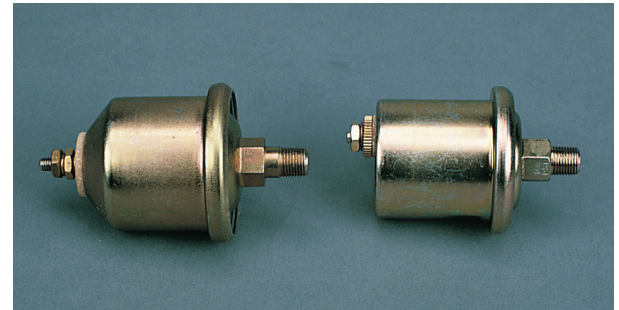


## Pressure Senders

- 1/8" NPTF
- A wide variety of sender types
- Metric and Standard values available



Catalog	Factory	Description
90512	SD0003	SENDER (Oil Pressure) (1/8 NPTF American 80 PSI) (Single Standard)
90511	SD0025	SENDER (Oil Pressure) (1/8 NPTF American 80 PSI) (Dual Standard)
90516	SD0031	SENDER (Oil Pressure) (1/8 NPTF European 5 BAR) (Single Float)
90519	SD0006	SENDER (Oil Pressure) (1/8 NPTF American 100 PSI) (Single Standard)
90526	SD0035	SENDER (Oil Pressure) (1/8 NPTF European 10 BAR) (Single Standard)



## Other Senders

Catalog	Factory	Description
90530	SD0041	SENDER (Rudder Angle) (Single station) (Standard or Floating ground)
90901	DK9005	SENDER (Tachometer) (Diesel) (Mechanical takeoff)

## Lighting Replacements

KTF053	LM0067	LIGHTING [ LED ] (Bulb replacement pack (BLUE) (4 inch gauges) (2 pack)
KTF052	LM0078	LIGHTING [ LED ] (Bulb replacement pack (BLUE) (2 inch gauges) (2 pack)



# Specifications

*Our instruments are manufactured by Faria Beede Instruments., Inc. in Uncasville Connecticut, USA. Each instrument has been manufactured in an ISO:9001 2008 registered facility, built to stringent standards and has passed a comprehensive quality control procedure prior to shipment. Each instrument is backed by the Faria Beede Limited Warranty.*

## 4" & 5" Electronic Instruments

Operating Temperature	-4 °F to +158° F (-20° C to +70° C)
Storage Temperature	-22° F to +185° F (-30° C to +85° C)
Lighting	See product line for specific information
Operating Voltage	11.5 to 16 volts
Nominal Voltage	14.2 volts
Current Consumption	< 100 mA, without illumination
Bezel	Stainless Steel or Aluminum - see product line for specific information
Lens	Glass or Poly carbonate - see product line for specific information
Connection	Studs, blade terminals, connectors - see product line for specific information
Mounting Bracket	Plastic mounting clamp. Clamping range 0 -.8" (0-20 mm)
Torque	5 to 7 inch pounds (.57 - .80 Nm)
Mounting Hole	3 3/8" (85 mm) for 4" Instrument – 4 3/8" (112 mm) for 5" Instrument

## 4" & 5" Mechanical Instruments

Operating Temperature	-22° F to +185° F (-30° C to +85° C)
Storage Temperature	-40° F to +221° F (-40° C to +105° C)
Lighting	See product line for specific information
Bezel	Stainless Steel or Aluminum - see product line for specific information
Lens	Glass or Poly carbonate - see product line for specific information
Connection	Studs, blade terminals - see product line for specific information
Mounting Bracket	Plastic mounting clamp. Clamping range 0 -.8" (0-20 mm)
Torque	5 to 7 inch pounds (.57 - .80 Nm)
Mounting Hole	3 3/8" (85 mm) for 4" Instrument – 4 3/8" (112 mm) for 5" Instrument

## 2" Electronic Instruments

Operating Temperature	-4 °F to +158°F (-20° C to +70° C)
Storage Temperature	-22° F to +185°F (-30° C to +85° C)
Lighting	See product line for specific information
Operating Voltage	11.5 to 16 volts
Nominal Voltage	14.2 volts
Current Consumption	< 100 mA, without illumination
Bezel	Stainless Steel or Aluminum - see product line for specific information
Lens	Glass or Poly carbonate - see product line for specific information
Connection	Studs, blade terminals, connectors - see product line for specific information
Mounting Bracket	Plastic mounting clamp. Clamping range 0 -.8" (0-20 mm)
Torque	5 to 7 inch pounds (.57 - .80 Nm)
Mounting Hole	2 1/16" (53 mm) for 2" Instrument

## 2" Mechanical Instruments

Operating Temperature	-22 °F to +185°F (-30° C to +85° C)
Storage Temperature	-40 °F to +221°F (-40° C to +105° C)
Lighting	See product line for specific information
Bezel	Stainless Steel or Aluminum - see product line for specific information
Lens	Glass or Poly carbonate - see product line for specific information
Connection	Studs, blade terminals - see product line for specific information
Mounting Bracket	Plastic clamp, metal on water pressure. Clamping range 0 -.8" (0-20 mm)
Torque	5 to 7 inch pounds (.57 - .80 Nm)
Mounting Hole	2 1/16" (53 mm) for 2" Instrument





Made in the USA

Manufactured by the Faria Beede Instruments, Inc. , Uncasville CT, USA • Copyright and all other rights reserved.  
Our products are continually being improved. Specifications may change without notice.



**Faria Beede Instruments, Inc.**

P. O. Box 983  
Uncasville, CT 06382  
860.848.9271  
Fax: 860.848.2704

fm-002-0001 rev M 171026