



# Marine Aftermarket Catalog

# ENGINEERED *Elegance*™



With some of the most sophisticated information and instrumentation systems in the industry, and a range of products that are rugged enough to survive on military Humvee and heavy construction equipment, or with innovative styling for your boat or RV, Faria Beede Instruments, Inc. has the right products to meet future global needs for rugged, reliable, and innovative instrumentation.

For more than 50 years Faria Beede Instruments, Inc. has been dedicated to the principle of supplying our customers with the highest quality product at the most competitive prices.

All of our instruments are performance proven under the most demanding conditions. They are factory installed original equipment with major manufacturers worldwide. You can rely on Faria Beede Instruments, Inc. for world class quality, dependability and ease of installation.

Our years of manufacturing experience and knowledge of the industries we sell to have taught us to listen to the market place. Our in-house product design and development, component manufacture and instrument assembly allow us to respond quickly to your needs.

The company-wide use of Statistical Process Control (SPC), not only for ourselves but by our vendors as well, allow us to maintain a consistently high standard. In 1998, our efforts were recognized by the world as we became an ISO9001 registered company. We continually reaffirm our commitment to this standard and are now registered as a ISO9001:2008 company.

With the recent purchase of Beede Instruments of Penacook, NH, Faria has expanded our manufacturing capabilities to offer a broader product offering, unsurpassed value and design for all of our markets, including the US Military, industrial, recreational and majority of the world's leading boat manufacturers.

We support our products with a comprehensive Limited Warranty. Should you need them, our dedicated Customer Service Technical Experts are ready to provide installation, troubleshooting and warranty assistance. Boat builders world wide use Faria digital products as their first choice for reliability and accuracy and now we are bringing that to the aftermarket. Come on board and see what Faria has to offer. Happy boating!

- Instruments for
- Automotive**
- Commercial**
- Commercial Marine**
- Industrial**
- Marine**
- Military**
- Performance**
- Recreational**

## Featured



Boxed Sets - page 3



Depth Sounders - page 5

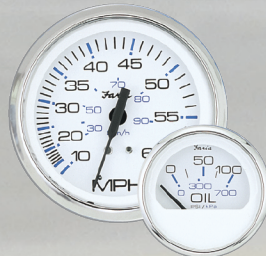


GPS Speedometer - page 6

## Classic Styling



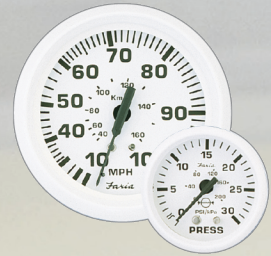
Chesapeake  
Black SS - page 9



Chesapeake  
White SS - page 10



Coral - page 11



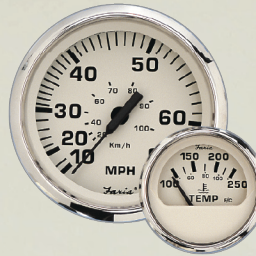
Dress White  
- page 12



Euro - page 13



Euro White  
- page 14



Euro Biege SS  
- page 15



Kronos  
- page 15



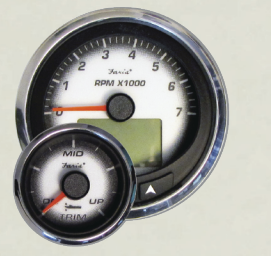
Platinum  
- page 16



Professional  
Red - page 16



Spun Silver  
- page 17



Digital Black Fade  
- page 18

## Accessories

Transducers and Senders - page 19

Accessories - pages 20, 21





## The Digital Dash is a complete set of digital gauges ready to install.

The Digital Dash kit digital gauge set is an easy to use Analog style instrument, with advanced ECU monitoring capabilities demanded by today's leading engine manufacturers.

The digital instrumentation communicates directly with the NMEA 2000, J-1939 and SmartCraft protocols used by the engine ECU providing an important link between the operator and the engine ECU. With just a push of a button the operator can tell the status of the health of the engine including diagnostic messages, fault alerts, and parameter information. The Digital Dash kit from Faria is a great value for those boat owners looking to upgrade the instruments on their boat with American Made, OEM drop in replacements.

### Basic Set - KFT032 (NMEA 2000) KTF042 (SmartCraft)

**MG3000 7000 RPM Tachometer** - 4-inch (3.375" dia. hole)

The MG3000 Tachometer features large lighted buttons with tactile feedback, LED back lighted dial, fog-resistant poly carbonate lens and plug and play connectorized cases. The daylight readable LCD is visible even in direct sunlight. A user-friendly, intuitive design makes navigating the menu interface easy to use. Customize the MG3000 with user definable screens and alarms.

The MG3000 Tachometer connects to the CAN bus and communicates directly with the engine ECU. Engine data, fault codes and alarms are displayed on the Tachometer's LCD display\*.

The MG3000 Tachometer is so much more than just a digital repeater. There are 3 Analog inputs which can be used for Air Temperature, Trim, Fuel Level and Water Pressure and a NMEA 0183 input for a GPS antenna for Lat/Long, Heading, COG and clock.

**MG1000 60 MPH/100 KPH Speedometer** - 4-inch (3.375" dia. hole)

The MG1000 Speedometer connects directly to the MG3000 Tachometer. This plug-and-play connection connects the Speedometer directly to the CAN bus. Like the Tachometer the Speedometer has the look and function of an analog gauge, but the pointer is driven with a digital stepper motor for increased accuracy. Speed from CAN bus, GPS or connected Paddle wheel available.

\*Note: Some proprietary engine manufacturer alarms may not display or may be displayed incorrectly.

### 4 Gauge Box Set - KTF034 (NMEA 2000) KTF043 (SmartCraft)

**MG3000 7000 RPM Tachometer** - 4-inch (3.375" dia. hole)

**MG1000 60 MPH/100 KPH Speedometer** - 4-inch (3.375" dia. hole)

**Digital Trim and Water Pressure gauges** - 2-inch (2.0625" dia. hole)

The discrete Digital Trim and Water Pressure gauges connect directly to the MG3000 Tachometer. Digital signals are processed by the engine and sent through the Tachometer providing an easy to use display of the information. The stepper motor driven pointer provides accurate feedback of Trim and Water Pressure reported by the engine ECU.



KTF035 - Honda Marine - Engine to Backbone Harness



KTF033 - Suzuki - Engine to Backbone Harness

KTF138 - Mini NMEA 2000 Backbone Harness



KTF044 - Mini SmartCraft Backbone Harness



Harnesses Available - Connects from engine to backbone for quick connections to gauges.



## Everything you need to upgrade your dash.

Packaged and ready for the display counter. These Boxed Sets offer a complete set of gauges ready to install.

Available in Chesapeake White Stainless Steel, Chesapeake Black Stainless Steel, Euro, Euro White, Dress White, Platinum, Spun Silver and Kronos styles .

The Inboard Set comes with Speedometer and Pitot, Tachometer, Fuel gauge, Voltmeter, Water Temp gauge and Oil Pressure gauge.



The Outboard Set comes complete with Speedometer and Pitot, Tachometer, Fuel gauge and Voltmeter.



Package Dimensions:  
20 (L) x 5.5 (W) x 9.5 (H) inches  
510 (L) x 140 (W) x 241 (H) mm



Style	Factory	Description	
Euro	KT9799	Inboard Set	6 gauge
Euro	KT9796	Outboard Set	4 gauge
Euro White	KT9798	Inboard Set	6 gauge
Euro White	KT9795	Outboard Set	4 gauge
Dress White	KT9797	Inboard Set	6 gauge
Dress White	KT9794	Outboard Set	4 gauge
Chesapeake SS White	KTF001	Inboard Set	6 gauge
Chesapeake SS White	KTF002	Outboard Set	4 gauge
Chesapeake SS Black	KTF003	Inboard Set	6 gauge
Chesapeake SS Black	KTF004	Outboard Set	4 gauge
Kronos	KTF024	Inboard Set	6 gauge
Spun Silver	KTF0184	Inboard Set	6 gauge
Spun Silver	KTF0182	Outboard Set	4 gauge
Platinum	KTF0183	Outboard Set	4 gauge

### NMEA 2000 Digital Kit

#### KTF034 - Base Set

MG3000 - Tachometer  
MG1000 - Speedometer

#### KTF032 - 4 O/B Set

MG3000 - Tachometer  
MG1000 - Speedometer  
Trim gauge  
Water Pressure gauge (0-60 PSI)

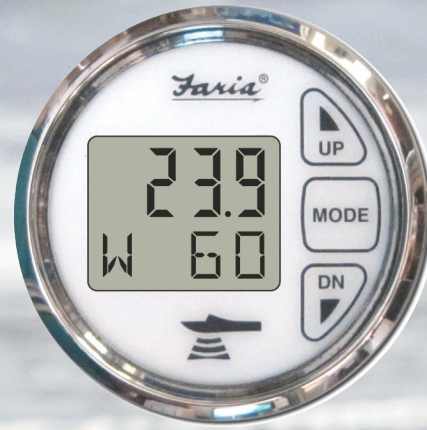
### SmartCraft Digital Kit

#### KTF043 - Base Set

MG3000 - Tachometer  
MG1000 - Speedometer

#### KTF043 - 4 O/B Set

MG3000 - Tachometer  
MG1000 - Speedometer  
Trim gauge  
Water Pressure gauge (0-60 PSI)



### Accuracy at High Speeds

Our Engineers have incorporated the latest microprocessor technology and proprietary software designed to take advantage of today's high performance transducers. As a result this depth sounder out performs all others on the market in its high speed capabilities and accuracy when faced with various bottom conditions.

The Depth Sounders from Faria Beede offer a 3-199 foot (61m) depth capability, with an automatic gain control, backlighting for maximum night vision, keel offset, and deep and shallow water alarms.

Depth can be read in meters, and feet. With its oversized back-lit display depth can be easily read in any condition. Audible and Visual alarms let the boater know when a shallow or deep water condition exist. A programmable keel offset lets you adjust the offset from the keel at the display.

### Available in many of the Classic Styles

Factory	Description	Style	Transom	In-Hull	Thru-Hull
DS0101	Depth Sounder	Euro Black	12850	12851	
DS0100	Depth Sounder	Euro White	12950	12951	
DS0103	Depth Sounder	Euro Beige SS	15150	15151	
DS0112	Depth Sounder	Coral	13050	13051	
DS0114	Depth Sounder	Dress White	13150	13151	13194
DS0110	Depth Sounder	Chesapeake SS White	13850	13851	13894
DS0111	Depth Sounder	Chesapeake SS Black	13750	13751	13795
DS0101	Depth Sounder	Professional Red	12850	12851	
DS0131	Depth Sounder	Kronos	19150	19151	
DS0104	Depth Sounder	Spun Silver	36150	36151	

### Add Temperature

The dual display of the Dual Temperature Depth Sounder can also show temperature of the water and the ambient air temp. all from one 2" gauge.

The Dual Temperature Depth Sounder comes with a Transom Mounted Transducer and Temperature Sender.

Factory	Description	Style	Transom	Thru-Hull
DS1009	Dual Temp. Depth Sounder	Dress White	13154	
DS1004	Dual Temp. Depth Sounder	Chesapeake SS White	13852	13896
DS1002	Dual Temp. Depth Sounder	Chesapeake SS Black	13752	13797

### Features and Benefits

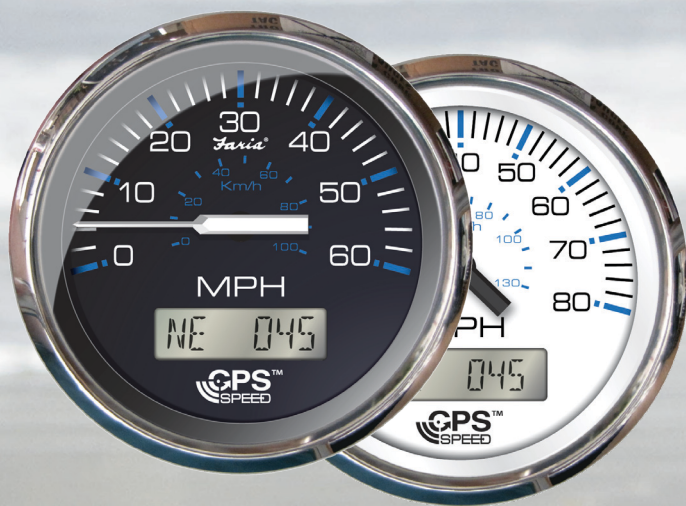
- Depth Range: 1- 61 meters (3 -199 feet)
- Deep and Shallow water alarms
- Programmable Keel off-set
- Automatic Gain control
- Back lighting for maximum night vision
- Metric or US standard units
- Easy to install!

Dual Temp Depth Sounder displays Outside Air temperatures and Water temperatures from 32° F to 200 °F.

Harnesses and connectors included.

Fits a standard 2 1/16" gauge mounting hole.

Transducer information on page 19.



The GPS Speedometer is a drop in replacement for your current speedometer and can be made to match your existing instrument dash.

GPS information is gathered from an internal GPS antenna. **No external antenna required.** The GPS Speedometer uses a highly accurate 48 channel GPS receiver. You can be sure that the GPS Speedometer is giving you the most accurate GPS information available on the market today.

Course Over Ground (COG) and actual heading (compass heading over ground) are displayed on the digital LCD.

Speed data is shown by an analog pointer. This pointer is driven by a digital stepper motor for increased accuracy and minimized pointer bounce during vessel operation.

## Features and Benefits

- Available in multiple Speed ranges up to 80 MPH, and 130 KPH, 50 and 70 KNOTS
- Premium LED back-lit or edge-lit dials
- **No external GPS antenna required**
- Available LCD displays Compass Rose heading and Actual heading (COG)
- Ultra fast Satellite acquisition time (TTFF)  
1 second from Hot start
- Speed Accuracy of +/- 1 MPH
- Heading Accuracy of +/- 1 Degree
- Digital stepper motor driven pointers
- Ideal replacement for speed sensing devices (pitot tube and paddle wheel) that typically fail over time
- Perfect for slow moving vessels where pitot tubes typically don't work
- Deutsch connector cases

### Display

The character LCD displays Heading and Compass and is back-lit for readability in inclement weather.

The LCD displays Compass Rose headings and actual course over ground heading. Heading is updated in 1° increments.

### Interface

The dial face is illuminated with a premium LED lighting system.

### Accuracy

Our GPS Speedometer has a Speed accuracy of +/- 1 MPH while moving and a hot (normal stand-by) start up time (TTFF - time to first fix) of about 1 second or a TTFF from a cold (no power applied) start of up to 30 seconds.

Heading accuracy is +/- 1 Degree.

### Enclosure

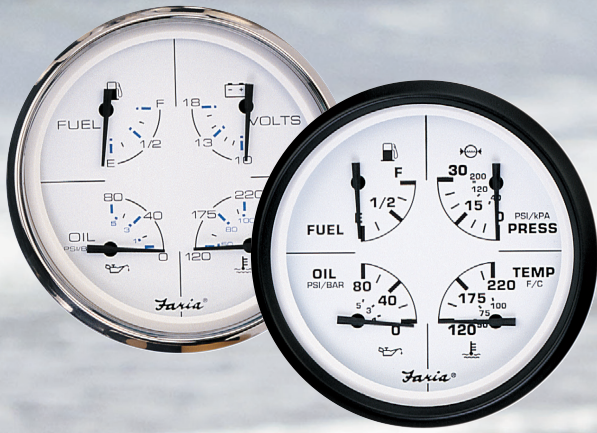
The enclosure is molded from Polycarbonate plastic with integrated Deutsch style connector shells (sockets) or studded case and is sealed against water intrusion in accordance with Ingress Protection (IP) rating IP67. Wires terminate to a sealed Deutsch weatherproof connector or ring terminals. This wire configuration allows the GPS Speedometer to work as a Plug and Play addition to your current dash.

Fits a standard 4 inch instrument dash hole.

Factory	Description	Style
SGP010	GPS Speedometer (80 MPH)	Chesapeake White SS
SGP005	GPS Speedometer (50 KNOT)	Chesapeake White SS
SGP003	GPS Speedometer (60 MPH)	Chesapeake White SS
SGP012	GPS Speedometer (80 MPH)	Chesapeake Black SS
SGP006	GPS Speedometer (50 KNOT)	Chesapeake Black SS
SGP004	GPS Speedometer (60 MPH)	Chesapeake Black SS
GPS106	NMEA0183 Antenna Kit - GPS	



# Multifunction gauges



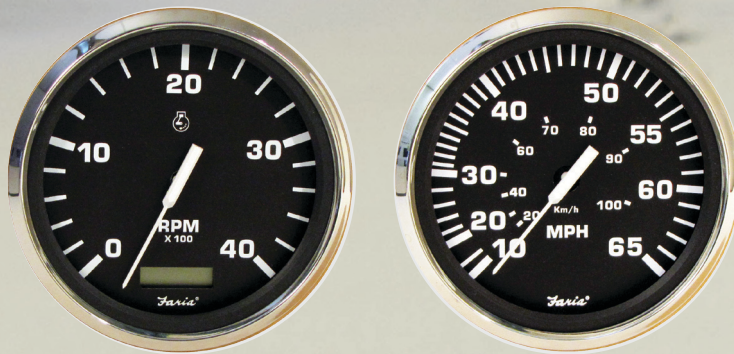
Dash boards are getting more and more crowded as today's technology explodes on to our boats. Often there are so many beeps and buzzes it's hard to see just what's happening. Of course you can fill up your dash with lots of little two inch discreet gauges but that too is often just as confusing. That's why Faria developed our multi-function gauge.

Faria has combined the most useful discreet gauges into one gauge and then styled them to match any of our many Standard styles.

Combine up to 5 discreet function on one gauge. That's up to 10 functions in the space of your Speedometer and Tachometer. Suddenly the dash doesn't seem so crowded any more.

Let us be your solution for dash overload.

Catalog	Factory	UPC	Size	Family	Description	Origin	Hazard	Lbs/kg
33751	GF0007	7 59266 33751 0	4	Ches. Blk SS	Multifunction [Fuel, Oil PSI, Water Temp, Volt]	USA	N	.62/.28
33851	GF0008	7 59266 33851 7	4	Ches. Wht SS	Multifunction [Fuel, Oil PSI, Water Temp, Volt]	USA	N	.62/.28
33151	GF0003	7 59266 33151 8	4	Dr. Wht	Multifunction [Fuel, Oil PSI, Water Temp, Volt]	USA	N	.62/.28
32851	GF0001	7 59266 32851 8	4	Euro Black	Multifunction [Fuel, Oil PSI, Water Temp, Volt]	USA	N	.62/.28
32951	GF0002	7 59266 32951 5	4	Euro Wht	Multifunction [Fuel, Oil PSI, Water Temp, Volt]	USA	N	.62/.28



## 5 inch gauges

Catalog	Factory	UPC	Size	Family	Description	Origin	Hazard	Lbs/kg
TCH223			5	Euro SS	Tachometer (6000 RPM) (Gas)	USA	N	1.0/.46
TD9156			5	Euro SS	Tachometer with Hourmeter (4000 RPM) (Diesel) (Mag Pick-Up)	USA	N	1.0/.46
SE9367			5	Euro SS	Speedometer (65 MPH) (Pitot)	USA	N	1.0/.46
TC9381			5	Ches. White SS	Tachometer with Hourmeter (6000 RPM) (Gas)	USA	N	1.0/.46
TD9369			5	Ches. White SS	Tachometer with Hourmeter (4000 RPM) (Diesel) (Mag Pick-Up)	USA	N	1.0/.46
SE9504			5	Ches. White SS	Speedometer (60 MPH) (Pitot)	USA	N	1.0/.46
TCH225			5	Ches. Black SS	Tachometer with Hourmeter (6000 RPM) (Gas)	USA	N	1.0/.46
TD9210			5	Ches. Black SS	Tachometer with Hourmeter (4000 RPM) (Diesel) (Mag Pick-Up)	USA	N	1.0/.46

## Standard Gas and Diesel

Available in 4 and 5 inch sizes with multiple ranges;

6000 RPM for Inboard and I/O engines

7000 RPM for all out board engines

3000 - 5000 RPM for diesel engines

These tachometers are available for all ignition systems, alternators and diesel engines.

Available with or without a digital hourmeter which records upto 999999.9 hours.



## SystemCheck Tachometer

7000 RPM universal tachometer with warning indicators for the Bombardier/Evinrude/Johnson SystemCheck engines.

Warning lights for No Oil, Engine Overheat, Check Engine and Low Oil.

Available in all Faria styles.



## Suzuki Monitor Tachometer

7000 RPM universal tachometer with warning indicators for the Suzuki engine monitor system.

Warning lights for Check Engine, Temperature, Oil Level and Rev Limit.

Available in all Faria styles.

Coming in early 2013 Webber engine monitors.



## OBD Tachometer

Tachometer with warning indicators for the OBD (On-board diagnostics) monitor system.

Warning light indicates an OBD alert from the engine ECU.

Contact Faria for available styles and part numbers.



## Programmable Tachometer with Hourmeter (OEM)

This tachometer can be programmed to function with 1, 2, 3, 4, 6 and 8 cylinder gasoline engines or with diesel engines, and can be used with most ignition coils including Alternator and Mag pickup inputs.

The analog looking dial and pointer sweep is driven by a digital stepper motor providing greater accuracy and dependability than magnetically wound gauges. You get the advantages of digital instrumentation with the look and feel of the analog gauges.

Contact Faria for available styles and part numbers.



## 2-inch Tachometer (OEM)

Available in ranges from 1500 RPM to 4000 RPM. This 2-inch Tachometer connects to the Alternator signal. The tachometer has four range selections for rough calibration and an adjustment potentiometer for fine adjustment.



## Chesapeake Black Stainless Steel

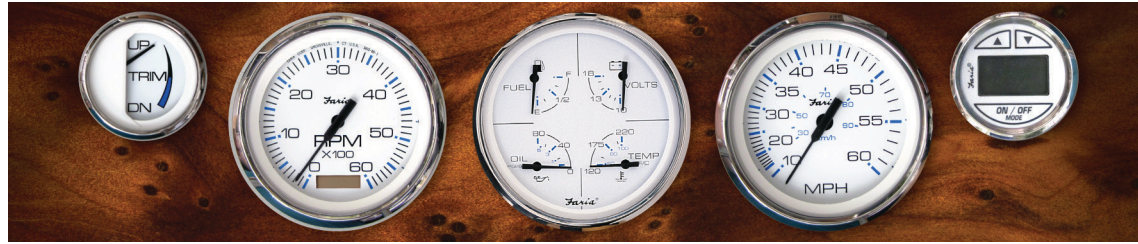


Perimeter-lighted black dial with stylish blue and white graphics, polished stainless steel bezel, contoured white pointer, and domed glass lens.

Catalog	Factory	UPC	Size	Description	Origin	Hazard	Lbs/kg
KTF003	KTF003	7 59266 00003 2		<b>Boxed Set</b> - Inboard (Speedo (60 MPH) (Mech)   Tach (6000 RPM)   Fuel Level   Voltmeter (10-16 VDC)   Water Temp (100-250 F)   Oil PSI (80 PSI)	USA	N	5.0/2.30
KTF004	KTF004	7 59266 00004 9		<b>Boxed Set</b> - Outboard (Speedo (60 MPH) (Mech)   Tach (7000 RPM)   Fuel Level   Voltmeter (10-16 VDC)	USA	N	5.0/2.30
33710	TC9785	7 59266 33710 7	4	Tachometer (6000 RPM) (Gas) (Inboard & I/O)	USA	N	.68/.31
33718	TC9035	7 59266 33718 3	4	Tachometer (7000 RPM) (All outboard)	USA	N	.68/.31
33742	TD9127	7 59266 33742 8	4	Tachometer (4000 RPM) (Diesel) (Mechanical takeoff & var ratio alt)	USA	N	.68/.31
33719	TD9732	7 59266 33719 0	4	Tachometer (4000 RPM) (Diesel) (Mag Pick-Up)	USA	N	.68/.31
33732	TC9127	7 59266 33732 9	4	Tachometer with Hourmeter (6000 RPM) (Gas) (Inboard)	USA	N	.68/.31
33740	TCH009	7 59266 33740 4	4	Tachometer with Hourmeter (7000 RPM) (Gas) (Outboard)	USA	N	.68/.31
33750	TC9884	7 59266 33750 3	4	Tachometer (7000 RPM) with SystemCheck Indicator (Gas) (I/E Outboard)	USA	N	.68/.31
33726	SGP004	7 59266 33726 8	4	Speedometer (60 MPH) (GPS) (with LCD, Compass)	USA	N	.68/.31
33730	SGP012	7 59266 33730 5	4	Speedometer (80 MPH) (GPS) (with LCD, Compass)	USA	N	.68/.31
33728	SGP006	7 59266 33728 2	4	Speedometer (50 KNOTS) (GPS)	USA	N	.68/.31
33704	SE9509	7 59266 33704 6	4	Speedometer (60 MPH) (Mechanical)	USA	N	.54/.25
33705	SE9512	7 59266 33705 3	4	Speedometer (80 MPH) (Mechanical)	USA	N	.54/.25
33722	SE9736	7 59266 33722 0	4	Speedometer (50 Knot) (Mechanical)	USA	N	.54/.25
33701	SY9625	7 59266 33701 5	4	Synchronizer (Dual Engine)	USA	N	.68/.31
33751	GF0007	7 59266 33751 0	4	Multifunction [Fuel Level   Oil PSI (80 PSI)   Water Temp (100-250 F)   Volt (10-16 VDC)]	USA	N	.62/.28
13752	DS1002	7 59266 13752 3	2	Depth Sounder with Air and Water Temperature	USA	N	1.0/.46
13797	DS1002	7 59266 13797 4	2	Depth Sounder with Air and Water Temperature (Thru-Hull Transducer)	USA	N	1.0/.46
13750	DS0111	7 59266 13750 9	2	Depth Sounder (Transom Mounted Transducer)	USA	N	1.0/.46
13751	DS0111	7 59266 13751 6	2	Depth Sounder (In-Hull Mounted Transducer)	USA	N	1.0/.46
13795	DS0111	7 59266 13795 0	2	Depth Sounder (Thru-Hull Mounted Transducer)	USA	N	1.0/.46
13701	GP9368	7 59266 13701 1	2	Fuel Level Gauge (E-1/2-F)	USA	N	.26/.12
13721	GP9777	7 59266 13721 9	2	Fuel Level Gauge (Metric)	USA	N	.26/.12
13722	GP9787	7 59266 13722 6	2	Tank Level Gauge (Potable water)	USA	N	.26/.12
13702	GP9640	7 59266 13702 8	2	Oil Pressure Gauge (80 PSI)	USA	N	.26/.12
13703	GP9688	7 59266 13703 5	2	Oil Pressure Gauge (100 PSI)	USA	N	.26/.12
13728	GP9779	7 59266 13728 8	2	Oil Pressure Gauge (5 BAR) (Metric)	USA	N	.26/.12
13729	GP9788	7 59266 13729 5	2	Oil Pressure Gauge (10 BAR) (Metric)	USA	N	.26/.12
13712	OP1018	7 59266 13712 7	2	Water Pressure Gauge Kit (30 PSI)	USA	N	.62/.28
13706	GP9449	7 59266 13706 6	2	Cylinder Head Temperature (60 - 220 F) with sender	USA	N	.28/.13
13704	GP9142	7 59266 13704 2	2	Water Temperature Gauge (100-250 F)	USA	N	.26/.12
13732	GP9174	7 59266 13732 5	2	Water Temperature Gauge (40-120 C) (Metric)	USA	N	.26/.12
13707	GP9402	7 59266 13707 3	2	Trim Gauge (Mercury/Mariner/Mercruiser/Volvo DP/Yamaha-2001 and newer)	USA	N	.26/.12
13709	GP9414	7 59266 13709 7	2	Trim Gauge (I/E/Suzuki Outboard)	USA	N	.26/.12
13736	AP9530	7 59266 13736 3	2	Ammeter (60-0-60)	USA	N	.26/.12
13726	VP7910	7 59266 13726 4	2	Battery Condition Indicator (12 VDC)	USA	N	.30/.14
13791	CL1027	7 59266 13791 2	2	Clock (Quartz) (Analog)	USA	N	.30/.14
13713	MH0055	7 59266 13713 4	2	Hourmeter (10,000 hrs) (12-32 VDC)	USA	N	.30/.14
13725	GP7377	7 59266 13725 7	2	Rudder Angle Indicator	USA	N	.32/.15
13705	VP9154	7 59266 13705 9	2	Voltmeter (10-16 VDC)	USA	N	.26/.12



*Perimeter-lighted white dial with stylish blue and black graphics, polished stainless steel bezel, contoured black pointer, and domed glass lens.*



Catalog	Factory	UPC	Size	Description	Origin	Hazard	Lbs/kg
KTF001	KTF001	7 59266 00001 8		<b>Boxed Set</b> - Inboard (Speedo (60 MPH) (Mech)   Tach (6000 RPM)   Fuel Level   Voltmeter (10-16 VDC)   Water Temp (100-250 F)   Oil PSI (80 PSI)	USA	N	5.0/2.30
KTF002	KTF002	7 59266 00002 5		<b>Boxed Set</b> - Outboard (Speedo (60 MPH) (Mech)   Tach (7000 RPM)   Fuel Level   Voltmeter (10-16 VDC)	USA	N	5.0/2.30
33807	TC9796	7 59266 33807 4	4	Tachometer (6000 RPM) (Gas) (Inboard & I/O)	USA	N	.68/.31
33817	TC9002	7 59266 33817 3	4	Tachometer (7000 RPM) (All outboard)	USA	N	.68/.31
33842	TD9128	7 59266 33842 5	4	Tachometer (4000 RPM) (Diesel) (Mechanical takeoff & var ratio alt)	USA	N	.68/.31
33818	TD9733	7 59266 33818 0	4	Tachometer (4000 RPM) (Diesel) (Mag Pick-Up)	USA	N	.68/.31
33832	TC9128	7 59266 33832 6	4	Tachometer with Hourmeter (6000 RPM) (Gas) (Inboard)	USA	N	.68/.31
33840	TCH008	7 59266 33840 1	4	Tachometer with Hourmeter (7000 RPM) (Gas) (Outboard)	USA	N	.68/.31
33834	TD9108	7 59266 33834 0	4	Tachometer with Hourmeter (4000 RPM) (Diesel) (Mech takeoff & var ratio alt)	USA	N	.68/.31
33841	TD9118	7 59266 33841 8	4	Tachometer with Hourmeter (4000 RPM) (Diesel) (Mag Pick-Up)	USA	N	.72/.33
33850	TC9881	7 59266 33850 0	4	Tachometer (7000 RPM) with SystemCheck Indicator (Gas) (I/E Outboard)	USA	N	.68/.31
33860	TC4025	7 59266 33860 9	4	Tachometer (7000 RPM) with Suzuki Monitor (Gas) (Suzuki Outboard)	USA	N	.68/.31
33829	SGP010	7 59266 33829 6	4	Speedometer (80 MPH) (GPS) (with LCD, Compass)	USA	N	.68/.31
33826	SGP003	7 59266 33826 5	4	Speedometer (60 MPH) (GPS) (with LCD, Compass)	USA	N	.68/.31
33827	SGP005	7 59266 33827 2	4	Speedometer (50 KNOTS) (GPS)	USA	N	.68/.31
33811	SE9521	7 59266 33811 1	4	Speedometer (60 MPH) (Mechanical)	USA	N	.54/.25
33819	SE9522	7 59266 33819 7	4	Speedometer (80 MPH) (Mechanical)	USA	N	.54/.25
33821	SE9740	7 59266 33821 0	4	Speedometer (30 Knot) (Mechanical)	USA	N	.54/.25
33822	SE9741	7 59266 33822 7	4	Speedometer (50 Knot) (Mechanical)	USA	N	.54/.25
33801	SY9629	7 59266 33801 2	4	Synchronizer (Dual Engine)	USA	N	.68/.31
33851	GF0008	7 59266 33851 7	4	Multifunction [Fuel Level   Oil PSI (80 PSI)   Water Temp (100-250 F)   Voltmeter (10-16 VDC)]	USA	N	.62/.28
13852	DS1004	7 59266 13852 0	2	Depth Sounder with Air and Water Temperature	USA	N	1.0/.46
13896	DS1004	7 59266 13896 4	2	Depth Sounder with Air and Water Temperature (Thru-Hull Transducer)	USA	N	1.0/.46
13850	DS0110	7 59266 13850 6	2	Depth Sounder (Transom Mounted Transducer)	USA	N	1.0/.46
13851	DS0110	7 59266 13851 3	2	Depth Sounder (In-Hull Mounted Transducer)	USA	N	1.0/.46
13894	DS0110	7 59266 13894 0	2	Depth Sounder (Thru-Hull Mounted Transducer)	USA	N	1.0/.46
13801	GP9373	7 59266 13801 8	2	Fuel Level Gauge (E-1/2-F)	USA	N	.26/.12
13818	GP9791	7 59266 13818 6	2	Fuel Level Gauge (Metric)	USA	N	.26/.12
13820	GP9781	7 59266 13820 9	2	Tank Level Gauge (Potable water) (Metric)	USA	N	.26/.12
13802	GP9647	7 59266 13802 5	2	Oil Pressure Gauge (80 PSI)	USA	N	.26/.12
13803	GP9689	7 59266 13803 2	2	Oil Pressure Gauge (100 PSI)	USA	N	.26/.12
13825	GP9783	7 59266 13825 4	2	Oil Pressure Gauge (10 BAR) (Metric)	USA	N	.26/.12
13826	GP9813	7 59266 13826 1	2	Transmission Pressure (25 BAR/350 PSI) (Metric)	USA	N	.26/.12
13812	OP1022	7 59266 13812 4	2	Water Pressure Gauge Kit (30 PSI)	USA	N	.62/.28
13875	OP1043	7 59266 13875 9	2	Water Pressure Gauge Kit (60 PSI)	USA	N	.62/.28
13806	GP9454	7 59266 13806 3	2	Cylinder Head Temperature (60 - 220 F) with sender	USA	N	.28/.13
13829	GP9784	7 59266 13829 2	2	Cylinder Head Temperature (20 - 100 C) with sender	USA	N	.28/.13
13804	GP9146	7 59266 13804 9	2	Water Temperature Gauge (100-250 F)	USA	N	.26/.12
13828	GP9178	7 59266 13828 5	2	Water Temperature Gauge (40-120 C) (Metric)	USA	N	.26/.12
13889	GP7440	7 59266 13889 6	2	Trim Gauge (Honda)	USA	N	.26/.12
13807	GP9649	7 59266 13807 0	2	Trim Gauge (Mercury/Mariner/Mercruiser/Volvo DP/Yamaha-2001 and newer)	USA	N	.26/.12
13809	GP9418	7 59266 13809 4	2	Trim Gauge (I/E/Suzuki Outboard)	USA	N	.26/.12
13808	GP9734	7 59266 13808 7	2	Trim Gauge (OMC Cobra/Volvo SX)	USA	N	.26/.12
13831	AP9529	7 59266 13831 5	2	Ammeter (60-0-60)	USA	N	.26/.12
13823	VP7911	7 59266 13823 0	2	Battery Condition Indicator (12 VDC)	USA	N	.30/.14
13891	CL1026	7 59266 13891 9	2	Clock (Quartz) (Analog)	USA	N	.30/.14
13813	MH0059	7 59266 13813 1	2	Hourmeter (10,000 hrs) (12-32 VDC)	USA	N	.30/.14
13822	GP7378	7 59266 13822 3	2	Rudder Angle Indicator	USA	N	.32/.15
13805	VP9158	7 59266 13805 6	2	Voltmeter (10-16 VDC)	USA	N	.26/.12

For more information about our products, go to [www.FariaBeede.com](http://www.FariaBeede.com)

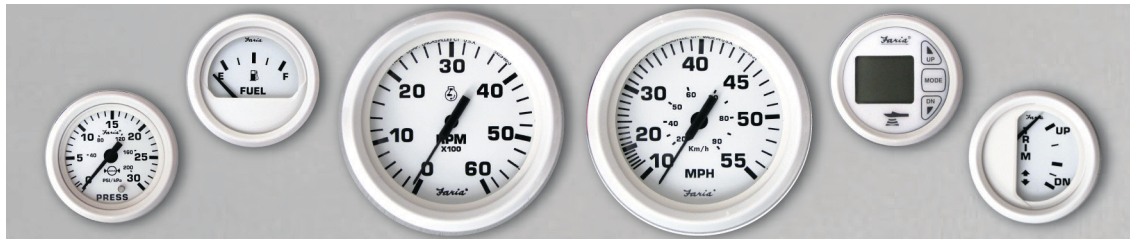


*Perimeter-lighted black dial with stylish white and blue graphics, black aluminum bezel with burnished leading edge, contoured white pointer, and flat glass lens.*

Catalog	Factory	UPC	Size	Description	Origin	Hazard	Lbs/kg
33004	TC9493	7 59266 33004 7	4	Tachometer (6000 RPM) (Gas) (Inboard & I/O)	USA	N	.68/.31
33005	TC9036	7 59266 33005 4	4	Tachometer (7000 RPM) (All outboard)	USA	N	.68/.31
33042	TD9126	7 59266 33042 9	4	Tachometer (4000 RPM) (Diesel) (Mechanical takeoff & var ratio alt)	USA	N	.68/.31
33003	TD9673	7 59266 33003 0	4	Tachometer (4000 RPM) (Diesel) (Mag Pick-Up)	USA	N	.68/.31
33032	TC9126	7 59266 33032 0	4	Tachometer with Hourmeter (6000 RPM) (Gas) (Inboard)	USA	N	.68/.31
33040	TCH011	7 59266 33040 5	4	Tachometer with Hourmeter (7000 RPM) (Gas) (Outboard)	USA	N	.68/.31
33009	SE9216	7 59266 33009 2	4	Speedometer (55 MPH) (Mechanical)	USA	N	.54/.25
33010	SE9218	7 59266 33010 8	4	Speedometer (80 MPH) (Mechanical)	USA	N	.54/.25
33007	SY9601	7 59266 33007 8	4	Synchronizer (Dual Engine)	USA	N	.68/.31
13050	DS0112	7 59266 13050 0	2	Depth Sounder (Thru-Hull Mounted Transducer)	USA	N	1.0/.46
13051	DS0112	7 59266 13051 7	2	Depth Sounder (In-Hull Mounted Transducer)	USA	N	1.0/.46
13001	GP9346	7 59266 13001 2	2	Fuel Level Gauge (E-1/2-F)	USA	N	.26/.12
13020	GP9390	7 59266 13020 3	2	Fuel Level Gauge (Metric)	USA	N	.26/.12
13021	GP9333	7 59266 13021 0	2	Tank Level Gauge (Potable water)	USA	N	.26/.12
13002	GP9527	7 59266 13002 9	2	Oil Pressure Gauge (80 PSI)	USA	N	.26/.12
13003	OP1000	7 59266 13003 6	2	Water Pressure Gauge Kit (30 PSI)	USA	N	.62/.28
13009	GP9405	7 59266 13009 8	2	Cylinder Head Temperature (60 - 220 F) with sender	USA	N	.28/.13
13004	GP9461	7 59266 13004 3	2	Water Temperature Gauge (100-250 F)	USA	N	.26/.12
13017	GP9348	7 59266 13017 3	2	Trim Gauge (Mercury/Mariner/Mercruiser/Volvo DP/Yamaha-2001 and newer)	USA	N	.26/.12
13016	GP9273	7 59266 13016 6	2	Trim Gauge (J/E/Suzuki Outboard)	USA	N	.26/.12
13011	AP9470	7 59266 13011 1	2	Ammeter (60-0-60)	USA	N	.26/.12
13012	VP7903	7 59266 13012 8	2	Battery Condition Indicator (12 VDC)	USA	N	.30/.14
13013	MH0010	7 59266 13013 5	2	Hourmeter (10,000 hrs) (12-32 VDC)	USA	N	.30/.14
13010	VP9106	7 59266 13010 4	2	Voltmeter (10-16 VDC)	USA	N	.26/.12
13060	VP9125	7 59266 13060 9	2	Voltmeter (20-32 VDC)	USA	N	.26/.12



*Perimeter-lighted white dial with bold black graphics, white aluminum bezel, contoured black pointer, and flat glass lens.*



Catalog	Factory	UPC	Size	Description	Origin	Hazard	Lbs/kg
KT9797	KT9797	7 59266 09797 1		<b>Boxed Set - Inboard</b> (Speedo (55 MPH) (Mech)   Tach (6000 RPM)   Fuel Level   Voltmeter (10-16 VDC)   Water Temp (100-250 F)   Oil PSI (80 PSI)	USA	N	5.0/2.30
KT9794	KT9794	7 59266 09794 0		<b>Boxed Set - Outboard</b> (Speedo (55 MPH) (Mech)   Tach (7000 RPM)   Fuel Level   Voltmeter (10-16 VDC)	USA	N	5.0/2.30
33103	TC9691	7 59266 33103 7	4	Tachometer (6000 RPM) (Gas) (Inboard & I/O)	USA	N	.68/.31
33104	TC9038	7 59266 33104 4	4	Tachometer (7000 RPM) (All outboard)	USA	N	.68/.31
33142	TD9124	7 59266 33142 6	4	Tachometer (4000 RPM) (Diesel) (Mechanical takeoff & var ratio alt)	USA	N	.68/.31
33121	TD9706	7 59266 33121 1	4	Tachometer (4000 RPM) (Diesel) (Mag Pick-Up)	USA	N	.68/.31
33132	TC9124	7 59266 33132 7	4	Tachometer with Hourmeter (6000 RPM) (Gas) (Inboard)	USA	N	.68/.31
33140	TCH013	7 59266 33140 2	4	Tachometer with Hourmeter (7000 RPM) (Gas) (Outboard)	USA	N	.68/.31
33150	TC9887	7 59266 33150 1	4	Tachometer (7000 RPM) with SystemCheck Indicator (Gas) (I/E Outboard)	USA	N	.68/.31
33122	SE9494	7 59266 33122 8	4	Speedometer (35 MPH) (Mechanical)	USA	N	.54/.25
33112	SE9475	7 59266 33112 9	4	Speedometer (55 MPH) (Mechanical)	USA	N	.54/.25
33113	SE9476	7 59266 33113 6	4	Speedometer (80 MPH) (Mechanical)	USA	N	.54/.25
33105	SY9618	7 59266 33105 1	4	Synchronizer (Dual Engine)	USA	N	.68/.31
33151	GF0003	7 59266 33151 8	4	Multifunction [Fuel Level   Oil PSI (80 PSI)   Water Temp (100-250 F)   Volt (10-16 VDC)]	USA	N	.62/.28
13154	DS1009	7 59266 13154 5	2	Depth Sounder with Air and Water Temperature	USA	N	1.0/.46
13150	DS0114	7 59266 13150 7	2	Depth Sounder (Transom Mounted Transducer)	USA	N	1.0/.46
13151	DS0114	7 59266 13151 4	2	Depth Sounder (In-Hull Mounted Transducer)	USA	N	1.0/.46
13194	DS1009	7 59s66 13194 1	2	Depth Sounder (Thru-Hull Mounted Trasducer)	USA	N	1.0/.46
13101	GP9389	7 59266 13101 9	2	Fuel Level Gauge (E-1/2-F)	USA	N	.26/.12
13117	GP9722	7 59266 13117 0	2	Fuel Level Gauge (Metric)	USA	N	.26/.12
13118	GP9723	7 59266 13118 7	2	Tank Level Gauge (Potable water)	USA	N	.26/.12
13102	GP9573	7 59266 13102 6	2	Oil Pressure Gauge (80 PSI)	USA	N	.26/.12
13108	OP1006	7 59266 13108 8	2	Water Pressure Gauge Kit (30 PSI)	USA	N	.62/.28
13113	GP9444	7 59266 13113 2	2	Cylinder Head Temperature (60 - 220 F) with sender	USA	N	.28/.13
13110	GP9120	7 59266 13110 1	2	Water Temperature Gauge (100-250 F)	USA	N	.26/.12
13112	GP9631	7 59266 13112 5	2	Water Temperature Gauge (40-120 C) (Metric)	USA	N	.26/.12
13122	GP9712	7 59266 13122 4	2	Trim Gauge (Mercury/Mariner/Mercruiser/Volvo DP/Yamaha-2001 and newer)	USA	N	.26/.12
13123	GP9711	7 59266 13123 1	2	Trim Gauge (I/E/Suzuki Outboard)	USA	N	.26/.12
13149	AP9526	7 59266 13149 1	2	Ammeter (60-0-60)	USA	N	.26/.12
13152	CL1014	7 59266 13152 1	2	Clock (Quartz) (Analog)	USA	N	.30/.14
13121	MH0036	7 59266 13121 7	2	Hourmeter (10,000 hrs) (12-32 VDC)	USA	N	.30/.14
13120	VP9139	7 59266 13120 0	2	Voltmeter (10-16 VDC)	USA	N	.26/.12





Perimeter-lighted black dial with bold white graphics, black aluminum bezel, contoured white pointer, and flat glass lens.

Catalog	Factory	UPC	Size	Description	Origin	Hazard	Lbs/kg
KT9799	KT9799	7 59266 09799 5		<b>Boxed Set</b> - Inboard (Speedo (55 MPH) (Mech)   Tach (6000 RPM)   Fuel Level   Voltmeter (10-16 VDC)   Water Temp (100-250 F)   Oil PSI (80 PSI)	USA	N	5.0/2.3
KT9796	KT9796	7 59266 09796 4		<b>Boxed Set</b> - Outboard (Speedo (55 MPH) (Mech)   Tach (7000 RPM)   Fuel Level   Voltmeter (10-16 VDC)	USA	N	5.0/2.3
32804	TC9643	7 59266 32804 4	4	Tachometer (6000 RPM) (Gas) (Inboard & I/O)	USA	N	.68/.31
32805	TC9011	7 59266 32805 1	4	Tachometer (7000 RPM) (All outboard)	USA	N	.68/.31
32829	TD9305	7 59266 32829 7	4	Tachometer (3000 RPM) (Diesel) (Mechanical takeoff & var ratio alt)	USA	N	.68/.31
32842	TD9122	7 59266 32842 6	4	Tachometer (4000 RPM) (Diesel) (Mechanical takeoff & var ratio alt)	USA	N	.68/.31
32803	TD9671	7 59266 32803 7	4	Tachometer (4000 RPM) (Diesel) (Mag Pick-Up)	USA	N	.68/.31
32832	TC9122	7 59266 32832 7	4	Tachometer with Hourmeter (6000 RPM) (Gas) (Inboard)	USA	N	.68/.31
32840	TCH015	7 59266 32840 2	4	Tachometer with Hourmeter (7000 RPM) (Gas) (Outboard)	USA	N	.68/.31
32831	TD9189	7 59266 32831 0	4	Tachometer with Hourmeter (3000 RPM) (Diesel) (Mech takeoff & var ratio alt)	USA	N	.68/.31
32834	TD9102	7 59266 32834 1	4	Tachometer with Hourmeter (4000 RPM) (Diesel) (Mech takeoff & var ratio alt)	USA	N	.68/.31
32841	TD9112	7 59266 32841 9	4	Tachometer with Hourmeter (4000 RPM) (Diesel) (Mag Pick-Up)	USA	N	.72/.33
32850	TC9951	7 59266 32850 1	4	Tachometer (7000 RPM) with SystemCheck Indicator (Gas) (J/E Outboard)	USA	N	.68/.31
32860	TC4003	7 59266 32860 0	4	Tachometer (7000 RPM) with Suzuki Monitor (Gas) (Suzuki Outboard)	USA	N	.68/.31
32861	TC9640	7 59266 32861 3	4	Blank gauge fill	USA	N	.26/.12
32808	SE9465	7 59266 32808 2	4	Speedometer (35 MPH) (Mechanical)	USA	N	.54/.25
32810	SE9463	7 59266 32810 5	4	Speedometer (55 MPH) (Mechanical)	USA	N	.54/.25
32812	SE9460	7 59266 32812 9	4	Speedometer (80 MPH) (Mechanical)	USA	N	.54/.25
32809	SE9659	7 59266 32809 9	4	Speedometer (30 Knot) (Mechanical)	USA	N	.54/.25
32811	SE9658	7 59266 32811 2	4	Speedometer (50 Knot) (Mechanical)	USA	N	.54/.25
32807	SY9602	7 59266 32807 5	4	Synchronizer (Dual Engine)	USA	N	.68/.31
32851	GF0001	7 59266 32851 8	4	Multifunction [Fuel Level   Oil PSI (80 PSI)   Water Temp (100-250 F)   Volt (10-16 VDC)]	USA	N	.62/.28
12850	DS0101	7 59266 12850 7	2	Depth Sounder (Transom Mounted Transducer)	USA	N	1.0/.46
12851	DS0101	7 59266 12851 4	2	Depth Sounder (In-Hull Mounted Transducer)	USA	N	1.0/.46
12894	DS0101	7 59266 12894 1	2	Depth Sounder (Thru-Hull Mounted Transducer)	USA	N	1.0/.46
12801	GP9357	7 59266 12801 9	2	Fuel Level Gauge (E-1/2-F)	USA	N	.26/.12
12802	GP9322	7 59266 12802 6	2	Fuel Level Gauge (Metric)	USA	N	.26/.12
12830	GP9324	7 59266 12830 9	2	Tank Level Gauge (Potable water)	USA	N	.26/.12
12831	GP9326	7 59266 12831 6	2	Tank Level Gauge (Potable water) (Metric)	USA	N	.26/.12
12803	GP9599	7 59266 12803 3	2	Oil Pressure Gauge (80 PSI)	USA	N	.26/.12
12845	GP9597	7 59266 12845 3	2	Oil Pressure Gauge (100 PSI)	USA	N	.26/.12
12805	GP9511	7 59266 12805 7	2	Oil Pressure Gauge (5 BAR) (Metric)	USA	N	.26/.12
12807	GP9513	7 59266 12807 1	2	Oil Pressure Gauge (10 BAR) (Metric)	USA	N	.26/.12
12810	OP1004	7 59266 12810 1	2	Water Pressure Gauge Kit (30 PSI)	USA	N	.62/.28
12875	OP1014	7 59266 12875 0	2	Water Pressure Gauge Kit (60 PSI)	USA	N	.62/.28
12819	GP9438	7 59266 12819 4	2	Cylinder Head Temperature (60 - 220 F) with sender	USA	N	.28/.13
12820	GP9440	7 59266 12820 0	2	Cylinder Head Temperature (20 - 100 C) with sender	USA	N	.28/.13
12812	GP9118	7 59266 12812 5	2	Water Temperature Gauge (100-250 F)	USA	N	.26/.12
12814	GP9124	7 59266 12814 9	2	Water Temperature Gauge (40-120 C) (Metric)	USA	N	.26/.12
12828	GP9374	7 59266 12828 6	2	Trim Gauge (Mercury/Mariner/Mercruiser/Volvo DP/Yamaha-2001 and newer)	USA	N	.26/.12
12827	GP9305	7 59266 12827 9	2	Trim Gauge (J/E/Suzuki Outboard)	USA	N	.26/.12
12829	GP9702	7 59266 12829 3	2	Trim Gauge (OMC Cobra/Volvo SX)	USA	N	.26/.12
12822	AP9523	7 59266 12822 4	2	Ammeter (60-0-60)	USA	N	.26/.12
12823	VP7901	7 59266 12823 1	2	Battery Condition Indicator (12 VDC)	USA	N	.30/.14
12824	MH0009	7 59266 12824 8	2	Hourmeter (10,000 hrs) (12-32 VDC)	USA	N	.30/.14
12825	CL1008	7 59266 12825 5	2	Clock (Quartz) (Analog)	USA	N	.30/.14
12833	GP7373	7 59266 12833 0	2	Rudder Angle Indicator	USA	N	.32/.15
12853	GP9833	7 59266 12853 8	2	SystemCheck Indicator	USA	N	.32/.15
12821	VP9134	7 59266 12821 7	2	Voltmeter (10-16 VDC)	USA	N	.26/.12
12861	AP9475	7 59266 12861 7	2	Blank gauge fill	USA	N	.26/.12

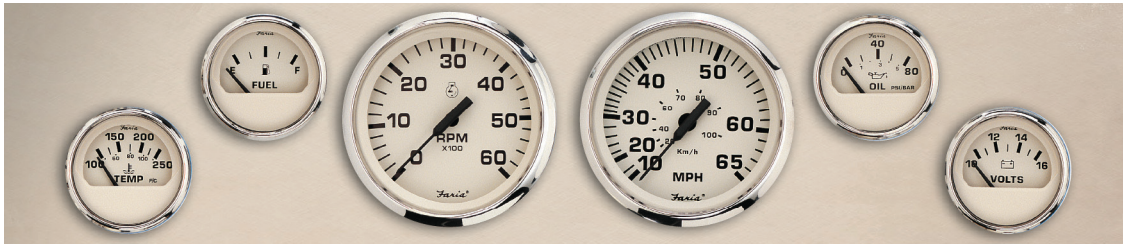
*Perimeter-lighted white dial with bold black graphics, black aluminum bezel, contoured black pointer, and flat glass lens.*



Catalog	Factory	UPC	Size	Description	Origin	Hazard	Lbs/kg
KT9798	KT9798	7 59266 09798 8		<b>Boxed Set</b> - Inboard (Speedo (55 MPH) (Mech)   Tach (6000 RPM)   Fuel Level   Voltmeter (10-16 VDC)   Water Temp (100-250 F)   Oil PSI (80 PSI)	USA	N	5.0/2.30
KT9795	KT9795	7 59266 09795 7		<b>Boxed Set</b> - Outboard (Speedo (55 MPH) (Mech)   Tach (7000 RPM)   Fuel Level   Voltmeter (10-16 VDC)	USA	N	5.0/2.30
32904	TC9679	7 59266 32904 1	4	Tachometer (6000 RPM) (Gas) (Inboard & I/O)	USA	N	.68/.31
32905	TC9003	7 59266 32905 8	4	Tachometer (7000 RPM) (All outboard)	USA	N	.68/.31
32942	TD9123	7 59266 32942 3	4	Tachometer (4000 RPM) (Diesel) (Mechanical takeoff & var ratio alt)	USA	N	.68/.31
32903	TD9672	7 59266 32903 4	4	Tachometer (4000 RPM) (Diesel) (Mag Pick-Up)	USA	N	.68/.31
32932	TC9123	7 59266 32932 4	4	Tachometer with Hourmeter (6000 RPM) Gas (Inboard)	USA	N	.68/.31
32940	TCH014	7 59266 32940 9	4	Tachometer with Hourmeter (7000 RPM) (Gas) (Outboard)	USA	N	.68/.31
32931	TD9187	7 59266 32931 7	4	Tachometer with Hourmeter (3000 RPM) (Diesel) (Mech takeoff & var ratio alt)	USA	N	.68/.31
32934	TD9103	7 59266 32934 8	4	Tachometer with Hourmeter (4000 RPM) (Diesel) (Mech takeoff & var ratio alt)	USA	N	.68/.31
32950	TC9886	7 59266 32950 8	4	Tachometer (7000 RPM) with SystemCheck Indicator (Gas) (J/E Outboard)	USA	N	.68/.31
32909	SE9473	7 59266 32909 6	4	Speedometer (55 MPH) (Mechanical)	USA	N	.54/.25
32910	SE9474	7 59266 32910 2	4	Speedometer (80 MPH) (Mechanical)	USA	N	.54/.25
32951	GF0002	7 59266 32951 5	4	Multifunction [Fuel Level   Oil PSI (80 PSI)   Water Temp (100-250 F)   Volt (10-16 VDC)]	USA	N	.62/.28
12950	DS0100	7 59266 12950 4	2	Depth Sounder (Transom Mounted Transducer)	USA	N	1.0/.46
12951	DS0100	7 59266 12951 1	2	Depth Sounder (In-Hull Mounted Transducer)	USA	N	1.0/.46
12994	DS0100	7 59266 12994 8	2	Depth Sounder (Thru-Hull Mounted Transducer)	USA	N	1.0/.46
12901	GP9358	7 59266 12901 6	2	Fuel Level Gauge (E-1/2-F)	USA	N	.26/.12
12919	GP9323	7 59266 12919 1	2	Fuel Level Gauge (Metric)	USA	N	.26/.12
12902	GP9596	7 59266 12902 3	2	Oil Pressure Gauge (80 PSI)	USA	N	.26/.12
12926	GP9514	7 59266 12926 9	2	Oil Pressure Gauge (10 BAR) (Metric)	USA	N	.26/.12
12903	OP1005	7 59266 12903 0	2	Water Pressure Gauge Kit (30 PSI)	USA	N	.62/.28
12910	GP9439	7 59266 12910 8	2	Cylinder Head Temperature (60 - 220 F) with sender	USA	N	.28/.13
12904	GP9119	7 59266 12904 7	2	Water Temperature Gauge (100-250 F)	USA	N	.26/.12
12929	GP9125	7 59266 12929 0	2	Water Temperature Gauge (40-120 C) (Metric)	USA	N	.26/.12
12989	GP7448	7 59266 12989 4	2	Trim Gauge (Honda)	USA	N	.26/.12
12916	GP9709	7 59266 12916 0	2	Trim Gauge (Mercury/Mariner/Mercruiser/Volvo DP/Yamaha-2001 and newer)	USA	N	.26/.12
12915	GP9708	7 59266 12915 3	2	Trim Gauge (J/E/Suzuki Outboard)	USA	N	.26/.12
12933	VP7908	7 59266 12933 7	2	Battery Condition Indicator (12 VDC)	USA	N	.30/.14
12923	CL1013	7 59266 12923 8	2	Clock (Quartz) (Analog)	USA	N	.30/.14
12913	MH0017	7 59266 12913 9	2	Hourmeter (10,000 hrs) (12-32 VDC)	USA	N	.30/.14
12931	GP7376	7 59266 12931 3	2	Rudder Angle Indicator	USA	N	.32/.15
12911	VP9136	7 59266 12911 5	2	Voltmeter (10-16 VDC)	USA	N	.26/.12
12960	VP9192	7 59266 12960 3	2	Voltmeter (20-32 VDC)	USA	N	.26/.12



# Euro Beige Stainless Steel



*Perimeter-lighted beige dial with bold black graphics, polished stainless steel bezel, contoured black pointer, and domed glass lens.*

Catalog	Factory	UPC	Size	Description	Origin	Hazard	Lbs/kg
35104	TC9610	7 59266 35104 2	4	Tachometer (6000 RPM) (Gas) (Inboard & I/O)	USA	N	.68/.31
35105	TC9016	7 59266 35105 9	4	Tachometer (7000 RPM) (All outboard)	USA	N	.68/.31
35132	TC9176	7 59266 35132 5	4	Tachometer with Hourmeter (6000 RPM) Gas (Inboard)	USA	N	.68/.31
35140	TCH027	7 59266 35140 0	4	Tachometer with Hourmeter (7000 RPM) (Gas) (Outboard)	USA	N	.68/.31
35122	SE9899	7 59266 35122 6	4	Speedometer (65 MPH) (Mechanical)	USA	N	.54/.25
15150	DS0103	7 59266 15150 5	2	Depth Sounder (Transom Mounted Transducer)	USA	N	1.0/.46
15151	DS0103	7 59266 15151 2	2	Depth Sounder (In-Hull Mounted Transducer)	USA	N	1.0/.46
15101	GP9919	7 59266 15101 7	2	Fuel Level Gauge (E-1/2-F)	USA	N	.26/.12
15103	GP9923	7 59266 15103 1	2	Oil Pressure Gauge (80 PSI)	USA	N	.26/.12
15145	GP9936	7 59266 15145 1	2	Oil Pressure Gauge (100 PSI)	USA	N	.26/.12
15110	OP1064	7 59266 15110 9	2	Water Pressure Gauge Kit (30 PSI)	USA	N	.62/.28
15112	GP9131	7 59266 15112 3	2	Water Temperature Gauge (100-250 F)	USA	N	.26/.12
15128	GP9921	7 59266 15128 4	2	Trim Gauge (Mercury/Mariner/Mercruiser/Volvo DP/Yamaha-2001 and newer)	USA	N	.26/.12
15127	GP9917	7 59266 15127 7	2	Trim Gauge (I/E/Suzuki Outboard)	USA	N	.26/.12
15124	MH0106	7 59266 15124 6	2	Hourmeter (10,000 hrs) (12-32 VDC)	USA	N	.30/.14
15121	VP9104	7 59266 15121 5	2	Voltmeter (10-16 VDC)	USA	N	.26/.12

# Kronos



*Polished Stainless Steel Bezel, Domed Fog-Resistant Lens, Perimeter Lighted Spun Aluminum dial with Gold and Black graphics. Gold increments and Logo on dial are Embossed. All instruments include two piece Newport Pointer with White Hub.*

Catalog	Factory	UPC	Size	Description	Origin	Hazard	Lbs/kg
KTF024	KTF024	7 59266 10024 4		<b>Boxed Set</b> - Inboard (Speedo (60 MPH) (Mech)   Tach (6000 RPM)   Fuel Level   Voltmeter (10-16 VDC)   Water Temp (100-250 F)   Oil PSI (80 PSI)	USA	N	5.0/2.3
39004	TC9983	7 59266 39004 1	4	Tachometer (6000 RPM) (Gas) (Inboard & I/O)	USA	N	.68/.31
39005	TC9252	7 59266 39005 8	4	Tachometer (7000 RPM) (All outboard)	USA	N	.68/.31
39007	TD9388	7 59266 39007 2	4	Tachometer (4000 RPM) (Diesel) (Mechanical takeoff & var ratio alt)	USA	N	.68/.31
39040	TCH305	7 59266 39040 9	4	Tachometer with Hourmeter (7000 RPM) (Gas) (Outboard)	USA	N	.68/.31
39009	SE9945	7 59266 39009 6	4	Speedometer (60 MPH) (Mechanical)	USA	N	.54/.25
19150	DS0131	7 59266 19150 1	2	Depth Sounder (Transom Mounted Transducer)	USA	N	1.0/.46
19151	DS0131	7 59266 19151 8	2	Depth Sounder (In-Hull Mounted Transducer)	USA	N	1.0/.46
19001	GP7683	7 59266 19001 6	2	Fuel Level Gauge (E-1/2-F)	USA	N	.26/.12
19002	GP7684	7 59266 19002 3	2	Oil Pressure Gauge (80 PSI)	USA	N	.26/.12
19007	OP1171	7 59266 19007 8	2	Water Pressure Gauge Kit (30 PSI)	USA	N	.62/.28
19003	GP7682	7 59266 19003 0	2	Water Temperature Gauge (100-250 F)	USA	N	.26/.12
19005	GP7681	7 59266 19005 4	2	Trim Gauge (Mercury/Mariner/Mercruiser/Volvo DP/Yamaha-2001 and newer)	USA	N	.26/.12
19020	MH0144	7 59266 19020 7	2	Hourmeter (10,000 hrs) (12-32 VDC)	USA	N	.30/.14
19004	VP7102	7 59266 19004 7	2	Voltmeter (10-16 VDC)	USA	N	.26/.12



Polished Stainless Steel Bezel, Domed Fog-Resistant Lens, Perimeter Lighted Black dial with White and Silver graphics. Orange tipped black pointer.



Catalog	Factory	UPC	Size	Description	Origin	Hazard	Lbs/kg
KTF0183	KTF0183	7 59266 00183 1		<b>Boxed Set - Outboard (Speedo (70 MPH) (Mech)   Tach (7000 RPM)   Fuel Level   Voltmeter (10-16 VDC) (Packard)</b>	USA	N	5.0/2.3
22001	GBC113	7 59266 22001 0	2	Trim gauge (BRP/Suzuki) (Packard)	USA	N	.26/.12
22002	GBC112	7 59266 22002 7	2	Trim gauge (Honda) (Packard)	USA	N	.26/.12
22003	GBC108	7 59266 22003 4	2	Trim gauge (Mercury/Mariner/Mercruiser/Volvo DP/Yamaha-2001 and newer) (Packard)	USA	N	.26/.12
22004	OP1174	7 59266 22004 1	2	Water Pressure gauge (30 PSI) (Packard)	USA	N	.62/.28

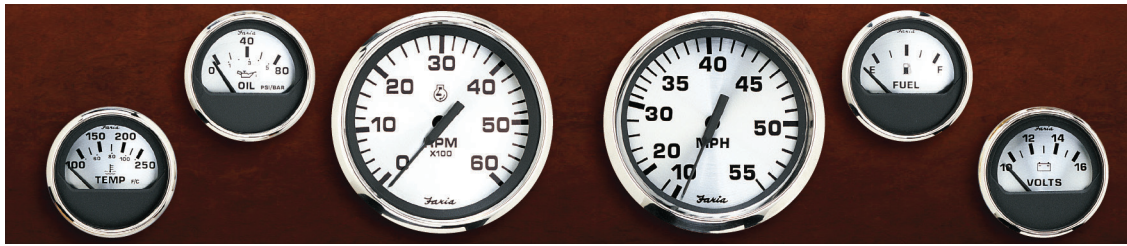


Professional Red



Perimeter-lighted black dial with stylish red and white graphics, black aluminum bezel, tear-drop white pointer, and flat glass lens.

Catalog	Factory	UPC	Size	Description	Origin	Hazard	Lbs/kg
34607	TC9933	7 59266 34607 9	4	Tachometer (6000 RPM) (Gas) (Inboard & I/O)	USA	N	.68/.31
34617	TC9026	7 59266 34617 8	4	Tachometer (7000 RPM) (All outboard)	USA	N	.68/.31
34642	TD9640	7 59266 34642 0	4	Tachometer (4000 RPM) (Diesel) (Mechanical takeoff & var ratio alt)	USA	N	.68/.31
34632	TC9152	7 59266 34632 1	4	Tachometer with Hourmeter (6000 RPM) (Gas) (Inboard)	USA	N	.68/.31
34640	TCH003	7 59266 34640 6	4	Tachometer with Hourmeter (7000 RPM) (Gas) (Outboard)	USA	N	.68/.31
34650	TC9934	7 59266 34650 5	4	Tachometer (7000 RPM) with SystemCheck Indicator (Gas) (I/E Outboard)	USA	N	.68/.31
34611	SE9777	7 59266 34611 6	4	Speedometer (60 MPH) (Mechanical)	USA	N	.54/.25
34619	SE9781	7 59266 34619 2	4	Speedometer (80 MPH) (Mechanical)	USA	N	.54/.25
34621	SE9783	7 59266 34621 5	4	Speedometer (30 Knot) (Mechanical)	USA	N	.54/.25
34622	SE9779	7 59266 34622 2	4	Speedometer (50 Knot) (Mechanical)	USA	N	.54/.25
34601	SY9671	7 59266 34601 7	4	Synchronizer (Dual Engine)	USA	N	.68/.31
12850	DS0101	7 59266 12850 7	2	Depth Sounder (Transom Mounted Transducer)	USA	N	1.0/.46
12851	DS0101	7 59266 12851 4	2	Depth Sounder (In-Hull Mounted Transducer)	USA	N	1.0/.46
14601	GP7282	7 59266 14601 3	2	Fuel Level Gauge (E-1/2-F)	USA	N	.26/.12
14618	GP7283	7 59266 14618 1	2	Fuel Level Gauge (Metric)	USA	N	.26/.12
14602	GP7063	7 59266 14602 0	2	Oil Pressure Gauge (80 PSI)	USA	N	.26/.12
14612	OP1057	7 59266 14612 9	2	Water Pressure Gauge Kit (30 PSI)	USA	N	.62/.28
14675	OP1058	7 59266 14675 4	2	Water Pressure Gauge Kit (60 PSI)	USA	N	.62/.28
14606	GP7164	7 59266 14606 8	2	Cylinder Head Temperature (60 - 220 F) with sender	USA	N	.28/.13
14604	GP7166	7 59266 14604 4	2	Water Temperature Gauge (100-250 F)	USA	N	.26/.12
14607	GP7422	7 59266 14607 5	2	Trim Gauge (Mercury/Mariner/Mercruiser/Volvo DP/Yamaha-2001 and newer)	USA	N	.26/.12
14609	GP7356	7 59266 14609 9	2	Trim Gauge (I/E/Suzuki Outboard)	USA	N	.26/.12
14613	MH0096	7 59266 14613 6	2	Hourmeter (10,000 hrs) (12-32 VDC)	USA	N	.30/.14
14605	VP7042	7 59266 14605 1	2	Voltmeter (10-16 VDC)	USA	N	.26/.12



*Perimeter-lighted silver dial with bold black graphics, polished stainless steel bezel, contoured black pointer, and domed glass lens.*

Catalog	Factory	UPC	Size	Description	Origin	Hazard	Lbs/kg
KTF0184	KTF0184	7 59266 00184 8		<b>Boxed Set - Inboard</b> (Speedo (55 MPH) (Mech)   Tach (6000 RPM)   Fuel Level   Voltmeter (10-16 VDC)   Water Temp (100-250 F)   Oil PSI (80 PSI))	USA	N	5.0/2.30
KTF0182	KTF0182	7 59266 00182 4		<b>Boxed Set - Outboard</b> (Speedo (55 MPH) (Mech)   Tach (7000 RPM)   Fuel Level   Voltmeter (10-16 VDC))	USA	N	5.0/2.30
36004	TC9476	7 59266 36004 4	4	Tachometer (6000 RPM) (Gas) (Inboard & I/O)	USA	N	.68/.31
36005	TC9004	7 59266 36005 1	4	Tachometer (7000 RPM) (All outboard)	USA	N	.68/.31
36032	TC9196	7 59266 36032 7	4	Tachometer with Hourmeter (6000 RPM) (Gas) (Inboard)	USA	N	.68/.31
36050	TC9478	7 59266 36050 1	4	Tachometer (7000 RPM) with SystemCheck Indicator (Gas) (I/E Outboard)	USA	N	.68/.31
36051	TC4027	7 59266 36051 8	4	Tachometer (7000 RPM) with Suzuki Monitor (Gas) (Suzuki Outboard)	USA	N	.68/.31
36009	SE9402	7 59266 36009 9	4	Speedometer (55 MPH) (Mechanical)	USA	N	.54/.25
36010	SE9910	7 59266 36010 5	4	Speedometer (65 MPH) (Mechanical)	USA	N	.54/.25
36011	SE9403	7 59266 36011 2	4	Speedometer (80 MPH) (Mechanical)	USA	N	.54/.25
16150	DS0104	7 59266 16150 4	2	Depth Sounder (Transom Mounted Transducer)	USA	N	1.0/.46
16151	DS0104	7 59266 16151 1	2	Depth Sounder (In-Hull Mounted Transducer)	USA	N	1.0/.46
16001	GP9932	7 59266 16001 9	2	Fuel Level Gauge (E-1/2-F)	USA	N	.26/.12
16002	GP9623	7 59266 16002 6	2	Oil Pressure Gauge (80 PSI)	USA	N	.26/.12
16003	OP1101	7 59266 16003 3	2	Water Pressure Gauge Kit (30 PSI)	USA	N	.62/.28
16004	GP9428	7 59266 16004 0	2	Water Temperature Gauge (100-250 F)	USA	N	.26/.12
16016	GP9223	7 59266 16016 3	2	Trim Gauge (Mercury/Mariner/Mercruiser/Volvo DP/Yamaha-2001 and newer)	USA	N	.26/.12
16017	GP9224	7 59266 16017 0	2	Trim Gauge (I/E/Suzuki Outboard)	USA	N	.26/.12
16020	MH0114	7 59266 16020 0	2	Hourmeter (10,000 hrs) (12-32 VDC)	USA	N	.30/.14
16023	VP9223	7 59266 16023 1	2	Voltmeter (10-16 VDC)	USA	N	.26/.12



*Designed by Boaters for Boaters*

*All of our instruments are put through rigorous testing to assure that you receive the best product possible and each instrument is backed by our Limited Warranty!*

Back-lighted white dial with bold black graphics, polished stainless steel bezel, light-piped fire red pointer and black hub, and domed glass lens.



Catalog	Factory	UPC	Size	Description	Origin	Hazard	Lbs/kg
KTF032	KTF032	7 59266 00032 2		<b>Boxed Set</b> - Tachometer (7000 RPM) (NMEA 2000 / J1939) (MG3000)   Speedometer (60 MPH/100 KPH) (MG1000) Water Pressure Gauge (60 PSI) (MG Digital)   Trim Gauge (MG Digital)	USA	N	5.0/2.30
KTF042	KTF042	7 59266 00042 1		<b>Boxed Set</b> - Tachometer (7000 RPM) (SmartCraft) (MG3000)   Speedometer (60 MPH/100 KPH) (MG1000)   Water Pressure Gauge (60 PSI) (MG Digital)   Trim Gauge (MG Digital)	USA	N	5.0/2.30
KTF034	KTF034	7 59266 00034 6		<b>Boxed Set</b> - Tachometer (7000 RPM) (NMEA 2000 / J1939) (MG3000)   Speedometer (60 MPH/100 KPH) (MG1000)	USA	N	4.0/1.82
KTF043	KTF043	7 59266 00043 0		<b>Boxed Set</b> - Tachometer (7000 RPM) (SmartCraft) (MG3000)   Speedometer (60 MPH/100 KPH) (MG1000)	USA	N	4.0/1.82
41007	MGT019	7 59266 41007 7	5	Tachometer (7000 RPM)(NMEA 2000) (MG3000)	USA	N	1.0/.46
41001	MGT017	7 59266 41001 5	4	Tachometer (7000 RPM) (NMEA 2000 / J1939) (MG3000)	USA	N	1.0/.46
41008	MGT045	7 59266 41008 4	5	Tachometer (7000 RPM) (SmartCraft) (MG3000)	USA	N	1.0/.46
41002	MGT018	7 59266 41002 2	4	Tachometer (7000 RPM) (SmartCraft) (MG3000)	USA	N	1.0/.46
41006	MGS028	7 59266 41006 0	5	Speedometer (70 MPH) (Depth Sounder) (MG3000)	USA	N	1.0/.46
41003	SG0007	7 59266 41003 9	4	Speedometer (60 MPH/100 KPH) (MG1000)	USA	N	1.0/.46
41005	MGS010	7 59266 41005 3	4	Speedometer (70 MPH/115 KPH) (MG3000) (Depth Sounder)	USA	N	1.0/.46
21001	GE0166	7 59266 21001 1	2	Fuel Level Gauge (MG Digital)	USA	N	1.0/.46
21002	GE0167	7 59266 21002 8	2	Trim Gauge (MG Digital)	USA	N	1.0/.46
21004	VE0026	7 59266 21004 2	2	Voltmeter (10-16 VDC) (MG Digital)	USA	N	1.0/.46
21003	GE0168	7 59266 21003 9	2	Water Pressure Gauge (60 PSI) (MG Digital)	USA	N	1.0/.46
21005	GE0169	7 59266 21005 3	2	Water Temperature Gauge (100-250°F) (MG Digital)	USA	N	1.0/.46
21006	GE0170	7 59266 21006 6	2	Oil Pressure Gauge (100 PSI) (MG Digital)	USA	N	1.0/.46



## Drop-in OEM Replacements



Factory	Type	Mount	Cable	Description
KTF049	GPS Antenna			Antenna - GPS (External) (HN0863 with Deutsch)
SN0001	Speedo	Transom		
SN0007	Speedo	Transom	25'	Non-Clogging
SN0010	Speedo/Depth	In-Hull		Adjustable
SN0011	Depth	Transom		
SN0012	Speedo/Depth/Temp	Transom		
SN0015	Speedo/Temp	Thru Hull		
SN0016	Speedo/Depth/Temp	Transom		600' Range
SN0018	Depth	Thru Hull	20'	235KHz
SN0020	Depth	Thru Hull	26'	235KHz
SN0021	Depth	Transom		235KHz
SN0023	Depth	In-Hull		18° Fixed
SN0030	Speedo/Depth	In-Hull		SN0010 with out Mounting Cup
SN0031	Speed/Depth/Temp	Thru Hull		Retractable
SN0033	Depth	In-Hull		
SN0034	Speedo/Temp	Thru Hull		
SN0036A	Depth/Temp	Thru Hull		
SN0037	Speedo/Temp	Thru Hull	9m	
SN0040N	Depth	Thru Hull	26'	235KHz
SN0048N	Depth	Thru Hull	20'	235KHz
SN0050A	Depth	Thru Hull	26'	235KHz
SN0058A	Depth	Thru Hull	20'	235KHz
SN0060A	Depth	Thru Hull	20'	1 5/8"
SN0068A	Depth	Thru Hull	20'	1 5/8"
SN0108	Depth	Transom		0 Tilt, Retractable
SN0200	Speedo	Transom		
SN1001	Speedo	Transom		SN0001 Crimped
SN1007	Speedo	Transom	25'	SN0007 with Bullet
SN1015	Speedo/Temp	Thru Hull		SN0015 with Terminal (TE0090)
SN1018	Depth	Thru Hull	48"	SN0018 with 2-pin Deutsch connectors (CN0103)
SN1019	Fuel Flow	In-Line		SN0019 with 2-pin Deutsch connectors (CN0103)
SN1020	Depth	Thru Hull	48"	SN0020 with 2-pin Deutsch connectors (CN0103)
SN1021	Depth	Transom		SN0021 with 2-pin Packard Connectors (CN0068)
SN1023A	Depth	In-Hull	48"	SN0023 with 2-pin Packard Connectors (CN0068)
SN1030	Speedo/Depth	In-Hull		SN0030 with 2-pin Packard Connectors (CN0068)
SN1036A	Depth	Thru Hull	48"	SN0036a with 48" cable
SN1040N	Depth	Thru Hull	48"	SN0040N with 2-pin Deutsch connectors (CN0103)
SN1050A	Depth	Thru Hull	48"	SN0050A with 2-pin Deutsch connectors (CN0103)
SN1060A	Depth	Thru Hull	48"	SN0060A with 2-pin Deutsch connectors (CN0103)
SN2010	Speedo/Depth	In-Hull		SN0010 with 2-pin Packard Connectors (CN0068)
SN2011	Depth	Transom		SN0011 with HW0197
SN2012	Speedo/Depth/Temp	Transom		SN0012 with 2-pin Packard Connectors (CN0068)
SN2015	Speedo/Temp	Thru Hull		SN0015 with HW0209
SN2016	Speedo/Depth/Temp	Transom		SN0016 with 2-pin Packard Connectors (CN0068)
SN2018	Depth	Thru Hull	20'	SN0018 with 2-pin Packard Connectors (CN0068)
SN2020	Depth	Thru Hull	26'	SN0020 with 2-pin Packard Connectors (CN0068)
SN2030	Speedo/Depth	In-Hull	48"	SN0030 with 2-pin Packard Connectors (CN0068)
SN2031	Speed/Depth/Temp	Thru Hull		SN0031 with HW0197
SN2033	Depth	In-Hull		SN0033 with 2-pin Packard Connectors (CN0068)
SN2034	Speedo/Temp	Thru Hull		SN0034 Bulk Pack 24
SN2037	Speedo/Temp	Thru Hull	9m	SN0037 Bulk Pack 24
SN2040N	Depth	Thru Hull	26'	SN0040N with 2-pin Packard Connectors (CN0068)
SN2048N	Depth	Thru Hull	20'	SN0048N with 2-pin Packard Connectors (CN0068)
SN2050A	Depth	Thru Hull	26'	SN1050 with 2-pin Packard Connectors (CN0068)
SN2058A	Depth	Thru Hull	20'	SN0058A with 2-pin Packard Connectors (CN0068)
SN2060A	Depth	Thru Hull	26'	SN0060 with 2-pin Packard Connectors (CN0068)
SN2068A	Depth	Thru Hull	20'	SN0068A with 2-pin Packard Connectors (CN0068)
SN3001	Speedo	Transom		SN0001 with TE0096
SN3010	Speedo/Depth	In-Hull		SN0010 with HW0197
SN3011	Depth	Transom		SN0011 with 2-pin Packard Connectors (CN0068)
SN3012	Speedo/Depth/Temp	Transom		SN0012 with AMP Connection
SN3018	Depth	Thru Hull	20'	SN0018 with 2-pin Packard Connectors (CN0068)
SN3023	Depth	In-Hull	48"	SN0023 with 2-pin Packard Connectors (CN0068)
SN3060A	Depth	Thru Hull	8'	1 5/8" with Pig tail
SN3400	Speedo/Temp	Thru Hull		SN0034 Transducer only
SN3700	Speedo/Temp	Thru Hull		SN0037 Sensor only
SN4010	Speedo/Depth	In-Hull	48"	SN0010 with 2-pin Deutsch connectors (CN0103)
SN4011	Depth	Transom		SN0011 with HW0197 Premier
SN4012	Speedo/Depth	Transom		SN0012 with connector (CN0081)
SN4020	Depth	Thru Hull		SN0020 with 4-pin Packard Connector (CN0082)
SN4021	Depth	Transom		SN0011 with HW0197 (Calypso Chrome)
SN4040	Depth	Thru Hull	26'	SN0040 with 4-pin Packard Connector (CN0082)
SN4050A	Depth	Thru Hull		SN0050A with 4-pin Packard Connectors (CN0082)
SN4060A	Depth	Thru Hull	26'	SN0060A with 4-pin Packard Connector (CN0082)
SN5010	Speedo/Depth	In-Hull	48"	SN0030 with 2-pin Packard Connectors (CN0068)
SN5011	Depth	Transom	32"	SN0011 with 2-pin Deutsch connectors (CN0103)
SN5012	Speedo/Depth/Temp	Transom		SN0012 with HP0032 (Transducer Kit)

*Combined with our Depth sounders and other electronic instrumentation these transducers and senders offer a wide range of options to fit your needs.*

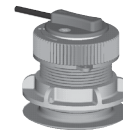
## SN0007



### Transom Mounted Non-Clogging Speed Sender

Transom mounted the paddle wheel and housing do not project beyond the hull allowing for minimal drag and spray. Unlike pilot tubes this speed sensor will not be damaged by beaching or other impact. This sensor comes with an adjustable bracket allowing mounting to a 3° to 16° angled Transom.

## SN0015



### Thru-hull Flush Mounted Temperature and Speed Sender

Perfect for water sports which require continuous accurate speed measurements like water-skiing, where boat angles can sometimes interrupt transom mounted senders. The thru-hull flush mounted temperature and speed sender offer virtually no drag. Easy installation and accuracy makes this sender the perfect choice for water sports.

## SN2010



### Adjustable In-hull Transducer

This in-hull transducer has a patented adjustable feature which ensures that sound waves are transmitted vertically to the bottom on almost any hull with a dead rise up to 22°. With no hull penetration, installation is easy and high speed performance is maximized.

## SN2011



### Transom Mounted Depth Transducer

With a low profile this depth unit offers little drag and easy installation for dead rise angles up to 30°. Designed with a release bracket to protect against impact damage. This unit provides good high speed operations up to 55 knots.

## SN2060



### Thru-Hull Transducer

1 5/8" thru hull depth transducer.

Digital Harness



Catalog	Factory	UPC	Size	Description	Origin	Hazard	Lbs/kg
KTF051	KTF051	7 59266 00051 3		Harness - Speedometer to Depth Sounder	USA	N	.26/.12
KTF033	KTF033	7 59266 00033 9		Harness - Suzuki NMEA 2000 (Engine to Back Bone) - For use with KTF138 and KTF037 - Sold separately.	USA	N	.26/.12
KTF035	KTF035	7 59266 00035 3		Harness - Honda NMEA 2000 (Engine to Back Bone) - For use with KTF138 and KTF037 - Sold separately.	USA	N	.62/.28
KTF036	KTF036	7 59266 00036 0		Harness - Yamaha NMEA 2000 (Engine to Back Bone) - For use with KTF138 and KTF037 - Sold separately.	USA	N	.26/.12
KTF037	KTF037	7 59266 00037 7		Harness - NMEA 2000 (Tachometer to Back Bone)	USA	N	1.0/.46
KTF044	KTF044	7 59266 00044 5		Harness - SmartCraft (Tachometer to Back Bone)	USA	N	1.0/.46
KTF138	KTF138	7 59266 00138 1		Harness - NMEA 2000 Mini Back Bone Harness	USA	N	3.0/1.36
KTF053	KTF053	7 59266 00053 7		LED - [Bulb replacement pack (Blue) - 4 inch gauges - (2)]	USA	N	.02/.01
KTF052	KTF052	7 59266 00052 0		LED - [Bulb replacement pack (Blue) - 2 inch gauges - (2)]	USA	N	.02/.01

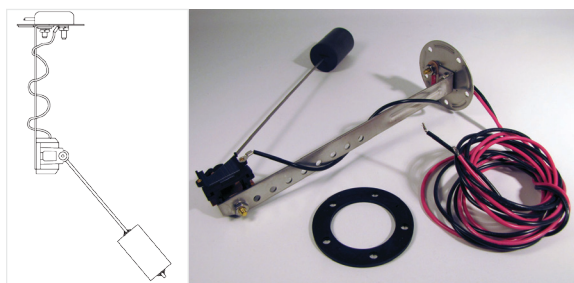
Pitot Tube Assembly Kits



Complete transom mount speedometer pick-up with escutcheon plate and mounting hardware (two choices of tubing length) for use with all marine speedometers.

Catalog	Factory	UPC	Description	Origin	Hazard	Lbs/kg
91109	KS9007	7 59266 91109 3	PITOT KIT (Universal)	USA	N	.30/.14
91106	KS9003	7 59266 91106 2	PITOT KIT (Universal) (20 ft. tubing)	USA	N	.56/. 25
91105	CG0001	7 59266 91105 5	PITOT KIT (Escutcheon cover plate for pitot tubing)	USA	N	.02/.01

Fuel Level Senders

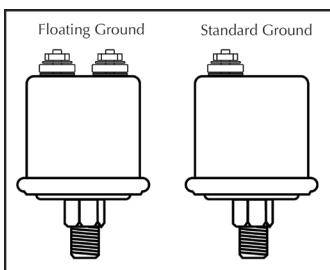
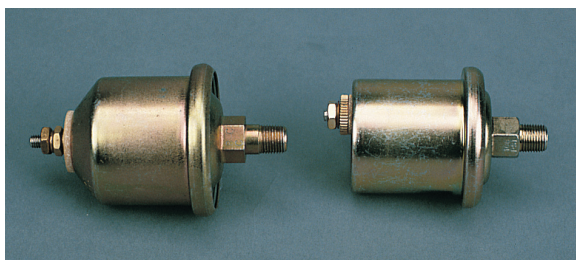


SAE 5 hole flange, adjustable for left or right arm movements and various tank depths. Includes gasket and screws and 2 #10 stud terminals included.

Sealing gasket and mounting hardware required.

Catalog	Factory	UPC	Description	Resistance	Length	Station	Resistance	Origin	Hazard	Lbs/kg
91001	LS6025	7 59266 91001 0	SENDER (Fuel Level)	American	8-16 in	Single	240-33 Ohm	USA	N	.62/.28
91002	LS6029	7 59266 91002 7	SENDER (Fuel Level)	American	8-16 in	Dual	120-16.6 Ohm	USA	N	.62/.28
91003	LS6026	7 59266 91003 4	SENDER (Fuel Level)	American	14-24 in	Single	240-33 Ohm	USA	N	.68/.31
91004	LS6030	7 59266 91004 1	SENDER (Fuel Level)	American	14-24 in	Dual	120-16.6 Ohm	USA	N	.68/.31
91005	LS6028	7 59266 91005 8	SENDER (Fuel Level)	Metric	20-40 cm	Single	180-10 Ohm	USA	N	.62/.28
91007	LS6027	7 59266 91007 2	SENDER (Fuel Level)	Metric	36-60 cm	Single	180-10 Ohm	USA	N	.67/.30
91017	PL1040	7 59266 91017 1	SENDER (FUEL LEVEL INSTALLATION KIT)					USA	N	.14/.06

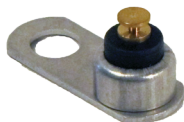
Pressure Senders



- 1/8" NPTF
- A wide variety of sender types
- Metric and Standard values available

Catalog	Factory	UPC	Description	Thread	Resistance	PSI	Station	Ground	Origin	Hazard	Lbs/kg
90512	SD0003	7 59266 90512 2	SENDER (Oil Pressure)	1/8 NPTF	American	80 PSI	Single	Standard	USA	N	.36/.16
90513	SD0024	7 59266 90513 9	SENDER (Oil Pressure)	1/8 NPTF	American	80 PSI	Single	Floating	USA	N	.38/.17
90511	SD0025	7 59266 90511 5	SENDER (Oil Pressure)	1/8 NPTF	American	80 PSI	Dual	Standard	USA	N	.36/.16
90516	SD0031	7 59266 90516 0	SENDER (Oil Pressure)	1/8 NPTF	Metric	5 BAR	Single	Floating	USA	N	.38/.17
90517	SD0032	7 59266 90517 7	SENDER (Oil Pressure)	1/8 NPTF	Metric	5 BAR	Dual	Standard	USA	N	.38/.17
90519	SD0006	7 59266 90519 1	SENDER (Oil Pressure)	1/8 NPTF	American	100 PSI	Single	Standard	USA	N	.38/.17
90534	SD0028	7 59266 90534 4	SENDER (Oil Pressure)	1/8 NPTF	American	100 PSI	Dual	Standard	USA	N	.38/.17
90526	SD0035	7 59266 90526 9	SENDER (Oil Pressure)	1/8 NPTF	Metric	10 BAR	Single	Standard	USA	N	.28/.13
90527	SD0036	7 59266 90527 6	SENDER (Oil Pressure)	1/8 NPTF	Metric	10 BAR	Single	Floating	USA	N	.28/.13

Temperature Senders



- 1/8" NPTF
- A wide variety of sender types
- Metric and Standard values available

Catalog	Factory	UPC	Description	Thread	Resistance	Stations	Ground	Origin	Hazard	Lbs/kg
90401	TS1029	7 59266 90401 9	SENDER (Temperature)	1/8	American	Single	Standard	USA	N	.10/.05
90402	TS2035	7 59266 90402 6	SENDER (Temperature)	1/4	American	Single	Standard	USA	N	.10/.05
90403	TS3044	7 59266 90403 3	SENDER (Temperature)	3/8	American	Single	Standard	USA	N	.10/.05
90404	TS4042	7 59266 90404 0	SENDER (Temperature)	1/2	American	Single	Standard	USA	N	.10/.05
90410	TS1055	7 59266 90410 1	SENDER (Temperature)	1/8	American	Single	Floating	USA	N	.10/.05
90406	TS1056	7 59266 90406 4	SENDER (Temperature)	1/8	American	Dual	Standard	USA	N	.06/.03
90412	TS1058	7 59266 90412 5	SENDER (Temperature)	1/8	Metric	Single	Standard	USA	N	.06/.03
90413	TS1059	7 59266 90413 2	SENDER (Temperature)	1/8	Metric	Single	Floating	USA	N	.10/.05
90405	TS5026	7 59266 90405 7	SENDER (Cylinder Head Temperature)					USA	N	.02/.01

Mounting Information Hole Size

Gauge Size	Hole Size	
	Standard	Metric
2	2.0625 in	53 mm
4	3.375 in	85 mm
5	4.375 in	112 mm

For more information about our products, go to [www.FariaBeede.com](http://www.FariaBeede.com)

## Did not see what you are looking for?

Faria Beede Instruments, Inc. has a lot more to show you. There are more than 300 boat manufacturers world wide using Faria Beede gauges. We lead the industry with a wide variety of instruments and engine monitoring devices.

Faria's high level of flexibility, competitive pricing and unsurpassed quality have helped to make Faria Beede a World-Leading manufacturer of engine instrumentation.

Our in-house, innovative product design and development, component manufacture, and instrument assembly allows us to respond quickly to the market's needs. Quality dependable products and a brand name you can trust.

All Faria Beede instruments are performance proven under the most demanding conditions. You can rely on our American made products for quality, durability, and easy installation.

We invite you to find out more about us and how we can help you and your engine monitoring needs.



Bob Chayrigues  
Aftermarket Sales Representative

860.848.9271 ext. 1262



*Whether we are producing instruments for offshore racers, runabouts, off-road vehicles, snowmobiles, or military vehicles, Faria Beede is committed to providing quality instruments built to withstand the harshest conditions.*

We are always available to answer questions about our instruments, please call our Customer Service number at; **860.848.9271 ext. 1229** or **800.473.2742**



Made in the USA

**Faria Beede Instruments, Inc.**

P. O. Box 983  
Uncasville, CT 06382  
860.848.9271  
Fax: 860.848.2704

88 Village Street  
Penacook, NH 03303  
603.753.6362  
Toll-free: 800.451.8255  
Fax: 603.753.6201