

ENGINEERED *Excellence*™

Faria®
EntelNet™



Wireless Telematics System



Cloud based engine monitoring
and systems control!



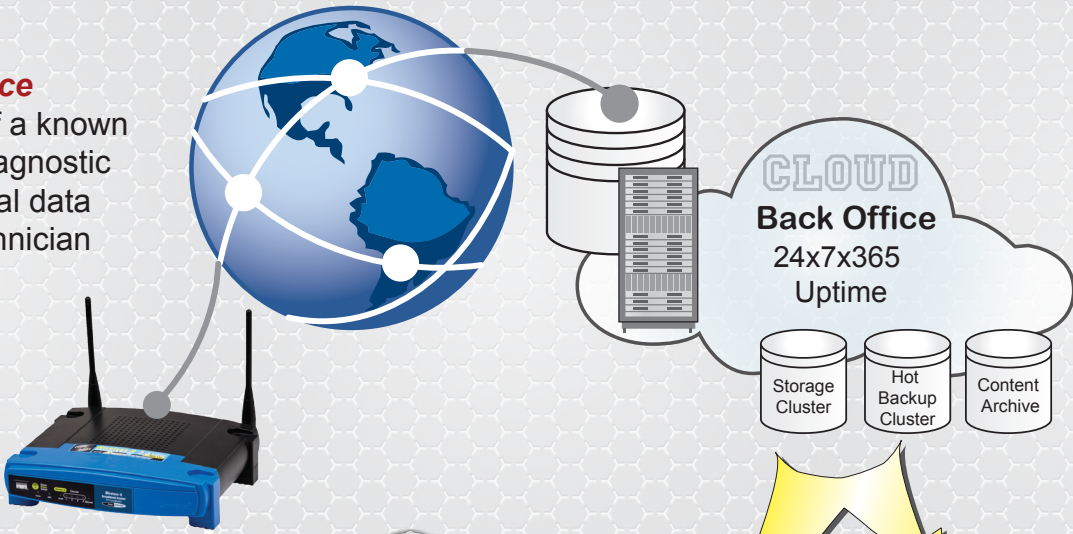


EntelNet™

Communications

Advanced Service

When in range of a known Wi-Fi Router, Diagnostic and environmental data is sent to the technician - automatically.



NMEA CAN DATA



Dealer



Premium Service

Back Office software allows the Repair team to analyze and recommend repair solutions to the customer or...

...to schedule a repair.

Basic Service

Using a Smart device the customer sends Diagnostic data to the technician.



Internet Capable Device



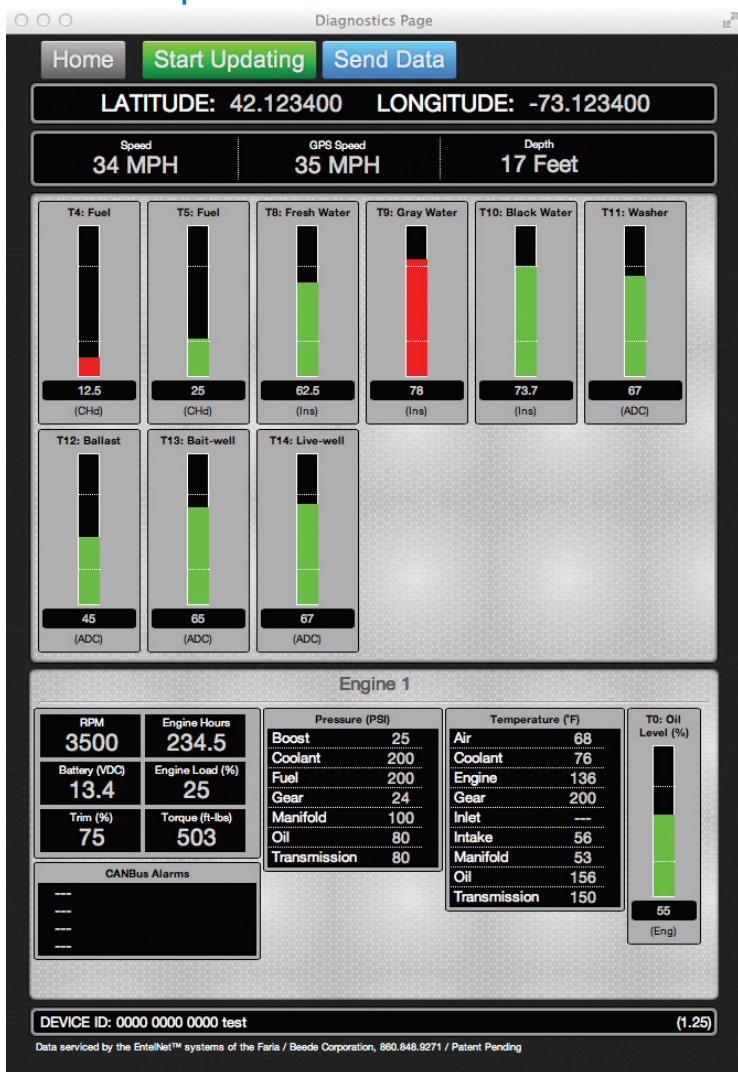
A complete solution for remote instrument monitoring!

Send your engine data to the cloud.

Use the *EntelNet™* and your internet capable device to monitor NMEA2000 CAN data being sent by the engine ECU and other critical vessel information right from the palm of your hand.



HTML Report Website



Connected directly to the NMEA2000 CAN Bus, Real-World data is sent by the EntelNet™ wireless module (Wi-Fi™).

The data, GPS speed, Map position, Instrument data and CAN error code information is displayed in an easy to read website and can be view by any internet capable device i.e. Smart Phone, Tablet or Computer. No wires needed.

It's all about the fault codes

When a NMEA 2000 engine is malfunctioning the engine ECU transmits the area of the malfunction as a fault code.

The fault code is often used to turn on a lamp or an alert indicator. The EntelNet™ system records these fault codes and sends the data to the technician giving them a heads up of possible problems or a means to diagnose the engines health remotely.



Get the technicians involved. Send the engine and other critical data anywhere in the world to be diagnosed.

Helps reduce warranty costs and can help lessen repair time.

Data can be viewed on a secure website for remote systems diagnostics.



